

## Product datasheet for CS502530

### Frozen Tissue Sections, Colon

#### Product data:

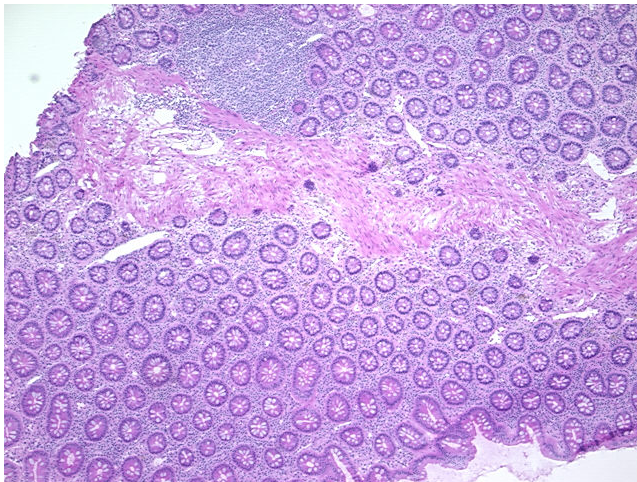
|   |                                       |
|---|---------------------------------------|
| Product Type:                                     | Frozen Sections                       |
| Disease State:                                    | Normal                                |
| Diagnosis Category:                               | Normal                                |
| Tissue:   | Colon                                 |
| Frozen Sample ID:                                 | FR000065B1                            |
| Case ID:  | CI0000000312                          |
| Tissue of Origin:                                 | Colon                                 |
| Site of Finding:                                  | Colon                                 |
| Appearance:                                       | R                                     |
| Sample Diagnosis (from Pathology Verification):   | Within normal limits                  |
| Normal:   | 100%                                  |
| Lesional:   | 0%                                    |
| Tumor:  | 0%                                    |
| Tumor Hypo/Acellular Stroma:                      | 0%                                    |
| Tumor Hypercellular Stroma:                       | 0%                                    |
| Necrosis:   | 0%                                    |
| Pathology Verification notes from H&E review:     | 40% mucosa, 35% submucosa, 25% muscle |
| CASE Diagnosis (from medical center path report): | Adenoma of colon                      |
| Age:  | 71                                    |
| Gender:   | Female                                |
| Race:   | Black or African American             |



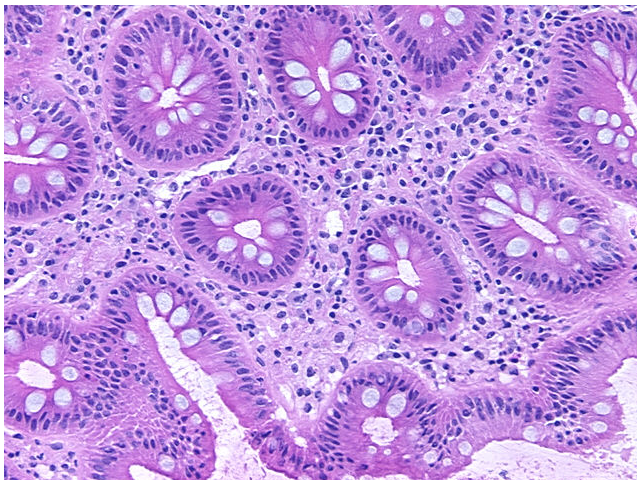
[View online »](#)

|                                     |  |
|-------------------------------------|--|
| <b>Tumor Grade:</b>                 | Not Reported   |
| <b>Minimum Stage Grouping:</b>      | Not Reported   |
| <b>T (Extent of Primary Tumor):</b> | Not Reported   |
| <b>N (Lymph node metastasis):</b>   | Not Reported   |
| <b>M (Distant metastasis):</b>      | Not Reported   |
| <b>Storage:</b>                     | Store frozen tissue sections at -80°C.   |
| <b>Stability:</b>                   | All frozen tissue sections are stable for 1 year from date of purchase if stored at -80°C without repeated freeze/thaws. |

**Product images:**



4x Image



20x Image