

Product datasheet for CS502426

Frozen Tissue Sections, Lung

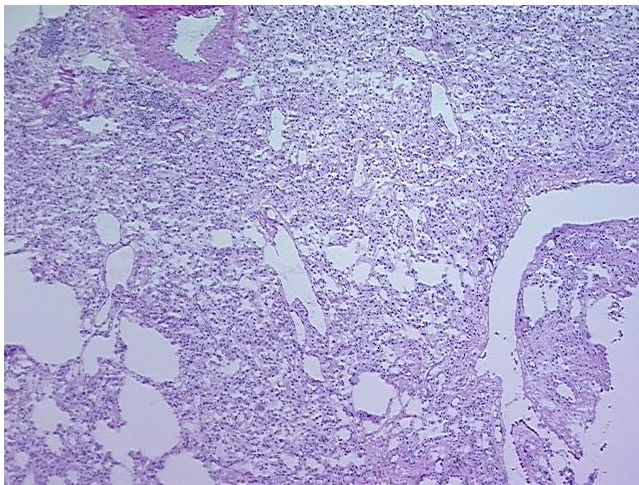
Product data:

Product Type:	Frozen Sections
Disease State:	Other Disease
Diagnosis Category:	Inflammation (various)
Tissue:	Lung
Frozen Sample ID:	FR000064A0
Case ID:	CI0000000304
Tissue of Origin:	Lung
Site of Finding:	Lung
Appearance:	L
Sample Diagnosis (from Pathology Verification):	Pneumonitis, chronic
Normal:	0%
Lesional:	100%
Tumor:	0%
Tumor Hypo/Acellular Stroma:	0%
Tumor Hypercellular Stroma:	0%
Necrosis:	0%
Pathology Verification notes from H&E review:	Lesion (100%): Pneumonitis, chronic 100%; Inflammation: Moderate Macrophages, Mild Lymphoid infiltrate; Non Tumor Structures: 80% Alveoli, 5% Bronchioles, 15% Fibrovascular septa
CASE Diagnosis (from medical center path report):	Malignant melanoma, metastatic
Age:	61
Gender:	Male

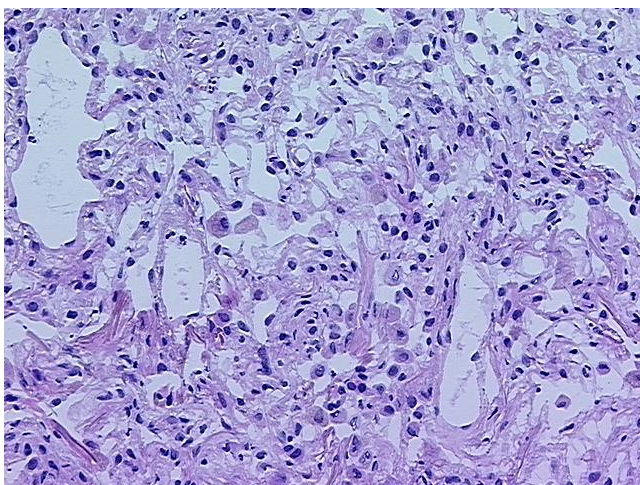


[View online »](#)

Race:	White or Caucasian
Tumor Grade:	Not Reported
Minimum Stage Grouping:	IV
T (Extent of Primary Tumor):	TX
N (Lymph node metastasis):	NX
M (Distant metastasis):	M1b
Storage:	Store frozen tissue sections at -80°C.
Stability:	All frozen tissue sections are stable for 1 year from date of purchase if stored at -80°C without repeated freeze/thaws.

Product images:

4x Image



20x Image