

## Product datasheet for **CS502289**

### Frozen Tissue Sections, Lung

#### Product data:

Product Type:	Frozen Sections
Disease State:	Other Disease
Diagnosis Category:	Pneumonia
Tissue:	Lung
Frozen Sample ID:	FR000061B4
Case ID:	CI0000000287
Tissue of Origin:	Lung
Site of Finding:	Lung
Appearance:	L
Sample Diagnosis (from Pathology Verification):	Pneumonia, organizing
Normal:	0%
Lesional:	100%
Tumor:	0%
Tumor Hypo/Acellular Stroma:	0%
Tumor Hypercellular Stroma:	0%
Necrosis:	0%
Pathology Verification notes from H&E review:	88% alveoli, 2% bronchioles, 10% fibrovascular stroma; Non-neoplastic lung with chronic inflammation and mild interstitial thickening suggestive of interstitial pneumonitis
CASE Diagnosis (from medical center path report):	Pneumonia, organizing
Age:	61
Gender:	Female
Race:	White or Caucasian



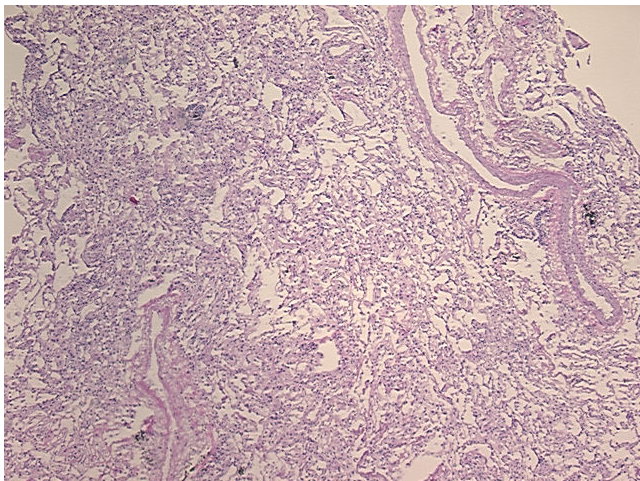
[View online »](#)

**Diagnostic Test Results:** Vimentin ~ VIM ! by IHC,Reported as Performed or Reviewed; CD45 ~ Leukocyte common antigen ! by IHC,Reported as Performed or Reviewed

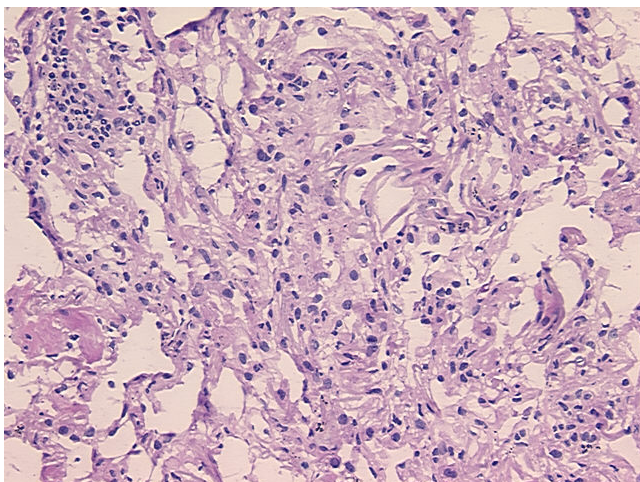
**Storage:** Store frozen tissue sections at -80°C.

**Stability:** All frozen tissue sections are stable for 1 year from date of purchase if stored at -80°C without repeated freeze/thaws.

**Product images:**



4x Image



20x Image