

## Product datasheet for CS501952

### Frozen Tissue Sections, Lung

#### Product data:

|   |   |
|---|---|
| Product Type:                                     | Frozen Sections   |
| Disease State:                                    | Other Disease   |
| Diagnosis Category:                               | Inflammation (various)  |
| Tissue:   | Lung  |
| Frozen Sample ID:                                 | FR00005B8A  |
| Case ID:  | CI0000000248  |
| Tissue of Origin:                                 | Lung  |
| Site of Finding:                                  | Lung  |
| Appearance:                                       | L   |
| Sample Diagnosis (from Pathology Verification):   | Pneumonitis, necrotizing granulomatous  |
| Normal:   | 0%  |
| Lesional:   | 100%  |
| Tumor:  | 0%  |
| Tumor Hypo/Acellular Stroma:                      | 0%  |
| Tumor Hypercellular Stroma:                       | 0%  |
| Necrosis:   | 0%  |
| Pathology Verification notes from H&E review:     | 80% alveoli, 10% bronchi/bronchioles, 10% fibrovascular tissue; contains heavy chronic inflammation |
| CASE Diagnosis (from medical center path report): | Pneumonitis, necrotizing granulomatous  |
| Age:  | 81  |
| Gender:   | Male  |
| Race:   | White or Caucasian  |

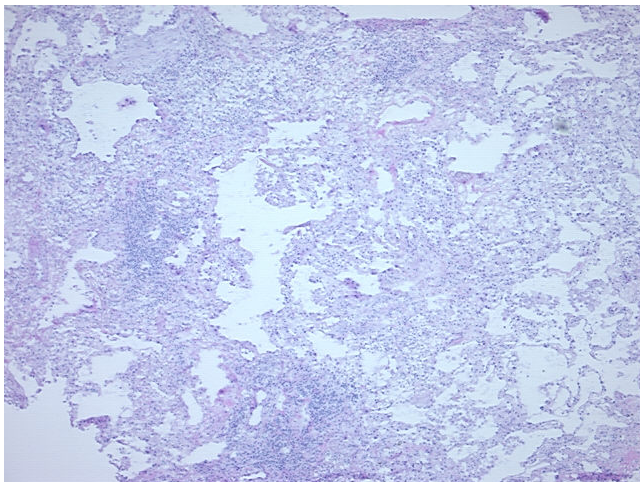


[View online »](#)

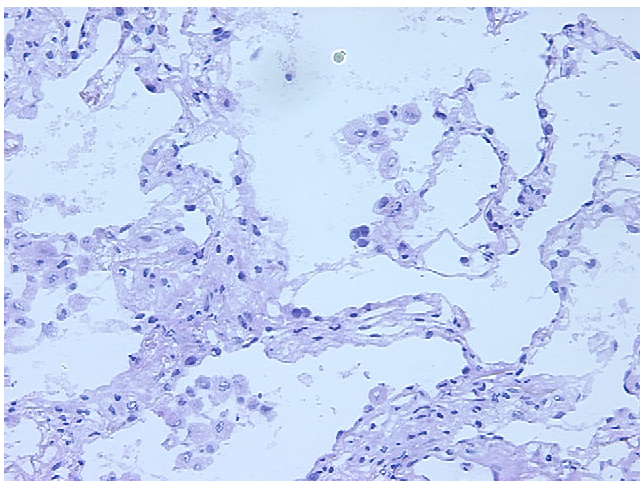
**Storage:** Store frozen tissue sections at -80°C.

**Stability:** All frozen tissue sections are stable for 1 year from date of purchase if stored at -80°C without repeated freeze/thaws.

**Product images:**



4x Image



20x Image