

Product datasheet for **CS501939**

Frozen Tissue Sections, Lung

Product data:

| | |
|---|--|
| Product Type: | Frozen Sections |
| Disease State: | Other Disease |
| Diagnosis Category: | Inflammation (various) |
| Tissue: | Lung |
| Frozen Sample ID: | FR00005B76 |
| Case ID: | CI0000000248 |
| Tissue of Origin: | Lung |
| Site of Finding: | Lung |
| Appearance: | L |
| Sample Diagnosis (from Pathology Verification): | Pneumonitis, necrotizing granulomatous |
| Normal: | 0% |
| Lesional: | 100% |
| Tumor: | 0% |
| Tumor Hypo/Acellular Stroma: | 0% |
| Tumor Hypercellular Stroma: | 0% |
| Necrosis: | 0% |
| Pathology Verification notes from H&E review: | 80% alveoli, 1% bronchi/bronchioles, 19% fibrovascular tissue; contains heavy chronic inflammation |
| CASE Diagnosis (from medical center path report): | Pneumonitis, necrotizing granulomatous |
| Age: | 81 |
| Gender: | Male |
| Race: | White or Caucasian |

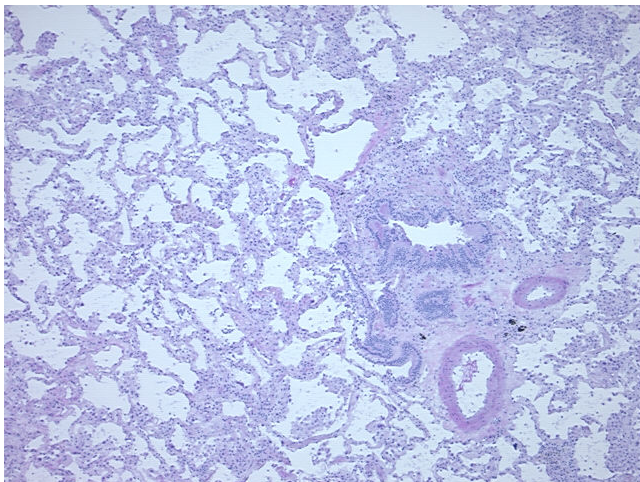


[View online »](#)

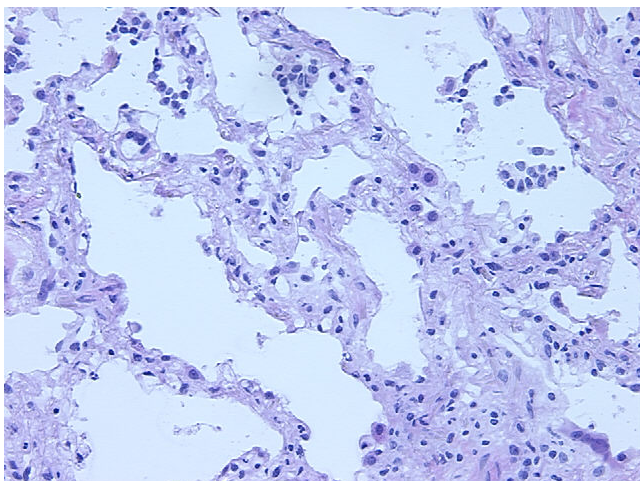
Storage: Store frozen tissue sections at -80°C.

Stability: All frozen tissue sections are stable for 1 year from date of purchase if stored at -80°C without repeated freeze/thaws.

Product images:



4x Image



20x Image