

Product datasheet for **CS501885**

Frozen Tissue Sections, Skin

Product data:

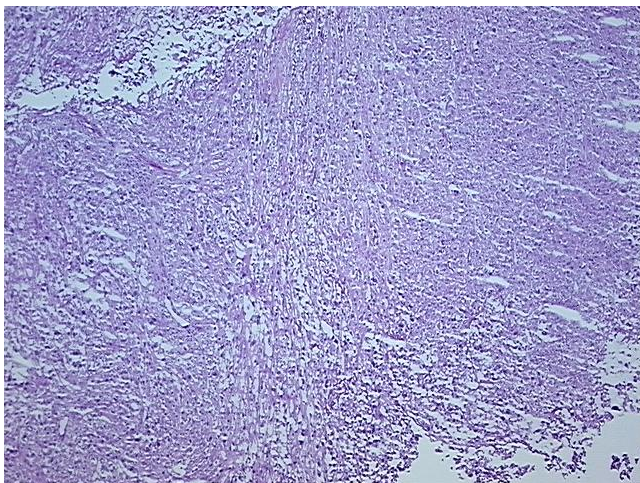
Product Type:	Frozen Sections
Disease State:	Cancer
Diagnosis Category:	Melanoma
Tissue:	Skin
Frozen Sample ID:	FR00005A82
Case ID:	CI0000000241
Tissue of Origin:	Skin
Site of Finding:	Soft tissue
Appearance:	T
Sample Diagnosis (from Pathology Verification):	Malignant melanoma, recurrent
Normal:	0%
Lesional:	0%
Tumor:	90%
Tumor Hypo/Acellular Stroma:	5%
Tumor Hypercellular Stroma:	0%
Necrosis:	5%
Pathology Verification notes from H&E review:	Inflammation: Mild Lymphoplasmacytic infiltrate
CASE Diagnosis (from medical center path report):	Malignant melanoma, recurrent
Age:	41
Gender:	Male
Race:	White or Caucasian



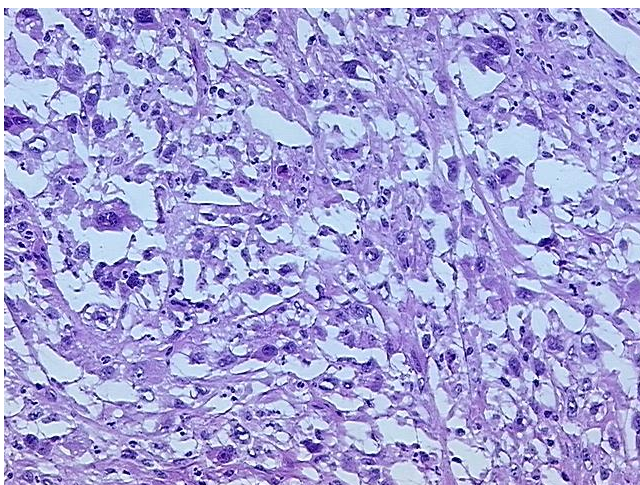
[View online »](#)

Tumor Grade:	Not Reported
Minimum Stage Grouping:	IIIA
T (Extent of Primary Tumor):	TX
N (Lymph node metastasis):	N1
M (Distant metastasis):	MX
Diagnostic Test Results:	MART-1 ~ Melanoma Marker ~ Melan-A,Negative; S100 protein,Positive; Cytokeratin CAM5.2 ~ CAM5.2 ! by IHC,Negative
Storage:	Store frozen tissue sections at -80°C.
Stability:	All frozen tissue sections are stable for 1 year from date of purchase if stored at -80°C without repeated freeze/thaws.

Product images:



4x Image



20x Image