

Product datasheet for CS501649

Frozen Tissue Sections, Lung

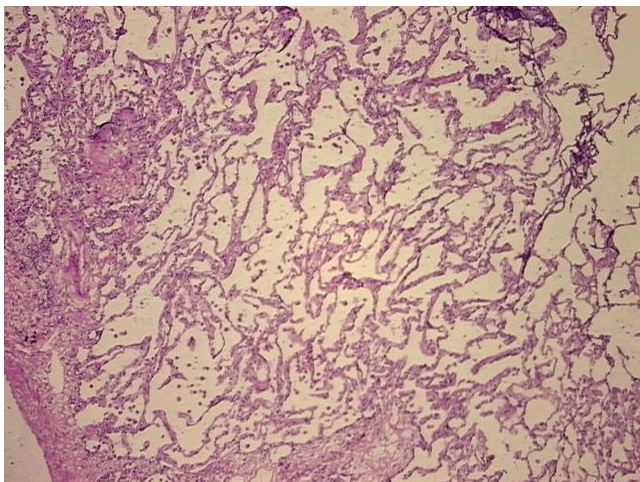
Product data:

Product Type:	Frozen Sections
Disease State:	Normal
Diagnosis Category:	Normal
Tissue:	Lung
Frozen Sample ID:	FR000056B1
Case ID:	CI0000000214
Tissue of Origin:	Lung
Site of Finding:	Lung
Appearance:	R
Sample Diagnosis (from Pathology Verification):	Within normal limits
Normal:	100%
Lesional:	0%
Tumor:	0%
Tumor Hypo/Acellular Stroma:	0%
Tumor Hypercellular Stroma:	0%
Necrosis:	0%
Pathology Verification notes from H&E review:	Non Tumor Structures: 60% Alveoli, 40% Fibrovascular septa
CASE Diagnosis (from medical center path report):	Osteosarcoma, metastatic
Age:	57
Gender:	Female
Race:	Black or African American

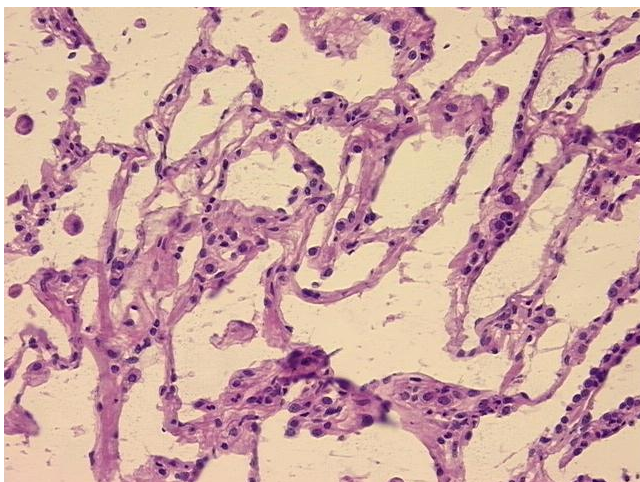


[View online »](#)

Tumor Grade:	Not Reported
Minimum Stage Grouping:	IVA
T (Extent of Primary Tumor):	TX
N (Lymph node metastasis):	NX
M (Distant metastasis):	M1a
Storage:	Store frozen tissue sections at -80°C.
Stability:	All frozen tissue sections are stable for 1 year from date of purchase if stored at -80°C without repeated freeze/thaws.

Product images:

4x Image



20x Image