

Product datasheet for **CS501122**

Frozen Tissue Sections, Lung

Product data:

Product Type:	Frozen Sections
Disease State:	Other Disease
Diagnosis Category:	Chronic Obstructive Pulmonary Disease (COPD)
Tissue:	Lung
Frozen Sample ID:	FR0000524C
Case ID:	CI0000000131
Tissue of Origin:	Lung
Site of Finding:	Lung
Appearance:	L
Sample Diagnosis (from Pathology Verification):	Emphysema, centrilobular
Normal:	0%
Lesional:	100%
Tumor:	0%
Tumor Hypo/Acellular Stroma:	0%
Tumor Hypercellular Stroma:	0%
Necrosis:	0%
Pathology Verification notes from H&E review:	90% alveoli, 1% bronchioles, 9% fibrovascular septae
CASE Diagnosis (from medical center path report):	Emphysema, centrilobular
Age:	57
Gender:	Male
Race:	White or Caucasian

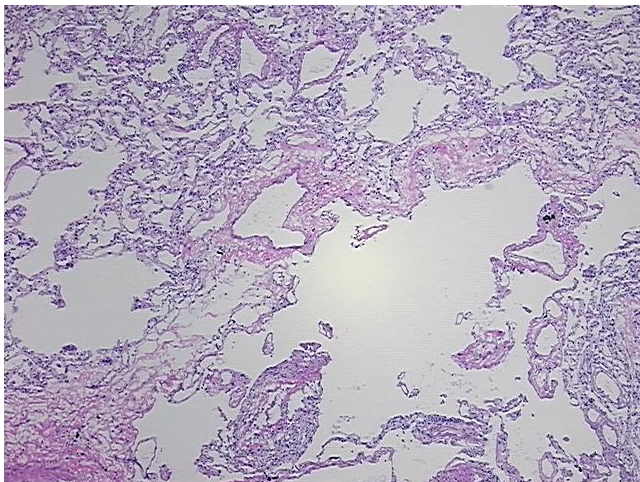


[View online »](#)

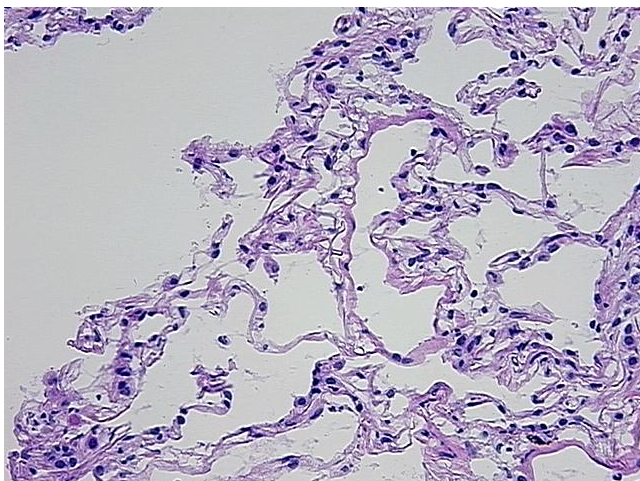
Storage: Store frozen tissue sections at -80°C .

Stability: All frozen tissue sections are stable for 1 year from date of purchase if stored at -80°C without repeated freeze/thaws.

Product images:



4x Image



20x Image