

Product datasheet for **CS500965**

Frozen Tissue Sections, Pleura

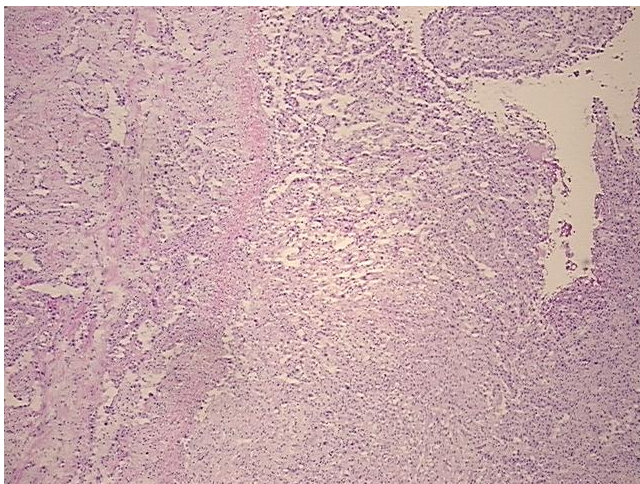
Product data:

Product Type:	Frozen Sections
Disease State:	Cancer
Diagnosis Category:	Mesothelioma
Tissue:	Lung
Frozen Sample ID:	FR00004AF8
Case ID:	CI0000000110
Tissue of Origin:	Pleura
Site of Finding:	Lung
Appearance:	T
Sample Diagnosis (from Pathology Verification):	Mesothelioma of pleura, mixed
Normal:	0%
Lesional:	0%
Tumor:	90%
Tumor Hypo/Acellular Stroma:	5%
Tumor Hypercellular Stroma:	5%
Necrosis:	0%
Pathology Verification notes from H&E review:	Pleural mesothelioma with extension along interlobular septa and nodular parenchymal deposits
CASE Diagnosis (from medical center path report):	Mesothelioma of pleura, mixed
Age:	62
Gender:	Male
Race:	White or Caucasian

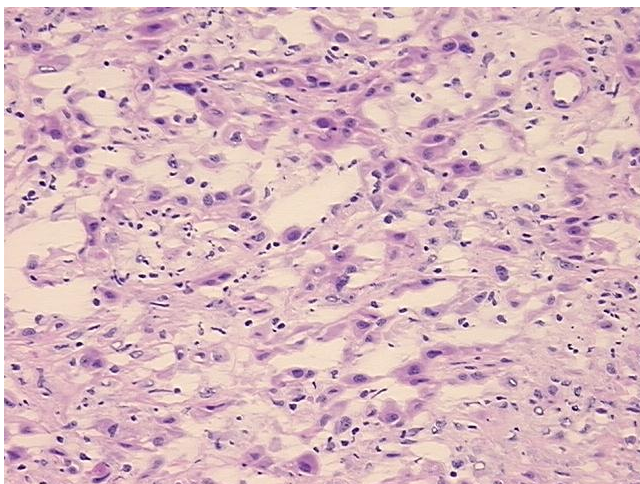


[View online »](#)

Tumor Grade:	Not Reported
Minimum Stage Grouping:	III
T (Extent of Primary Tumor):	T3
N (Lymph node metastasis):	N1
M (Distant metastasis):	MX
Storage:	Store frozen tissue sections at -80°C.
Stability:	All frozen tissue sections are stable for 1 year from date of purchase if stored at -80°C without repeated freeze/thaws.

Product images:

4x Image



20x Image