

Product datasheet for **CS500819**

Frozen Tissue Sections, Parotid gland

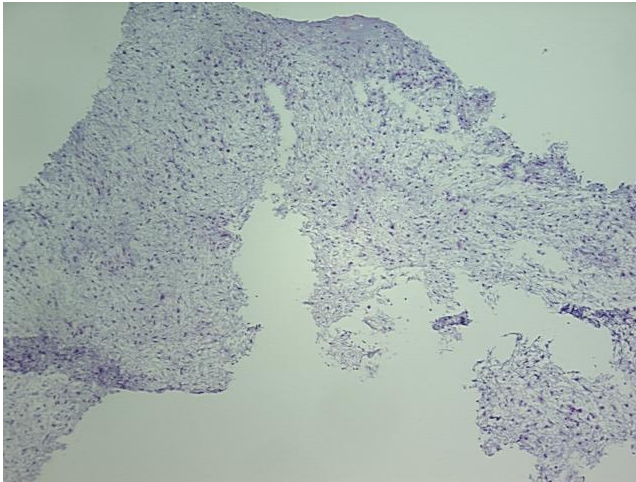
Product data:

Product Type:	Frozen Sections
Disease State:	Other Disease
Diagnosis Category:	Benign Tumors
Tissue:	Salivary gland
Frozen Sample ID:	FR00004401
Case ID:	CI0000000094
Tissue of Origin:	Parotid gland
Site of Finding:	Parotid gland
Appearance:	T
Sample Diagnosis (from Pathology Verification):	Pleomorphic adenoma of parotid gland, cellular
Normal:	0%
Lesional:	0%
Tumor:	100%
Tumor Hypo/Acellular Stroma:	0%
Tumor Hypercellular Stroma:	0%
Necrosis:	0%
Pathology Verification notes from H&E review:	1% Glandular epithelium, 99% Stroma
CASE Diagnosis (from medical center path report):	Pleomorphic adenoma of salivary gland
Age:	36
Gender:	Male
Race:	Not reported

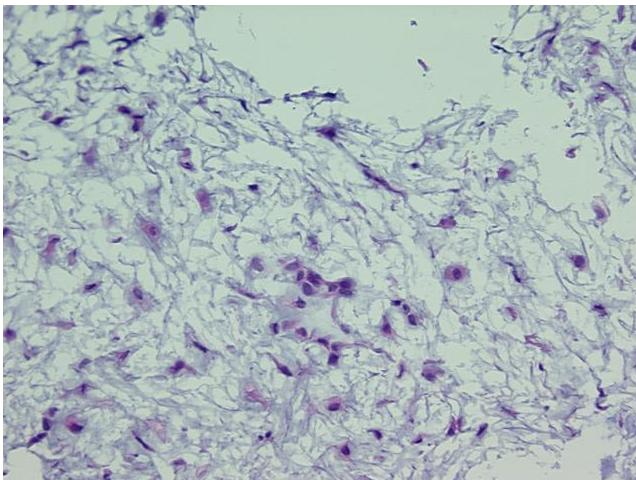


[View online »](#)

Tumor Grade:	Not Reported
Minimum Stage Grouping:	Not Reported
T (Extent of Primary Tumor):	Not Reported
N (Lymph node metastasis):	Not Reported
M (Distant metastasis):	Not Reported
Storage:	Store frozen tissue sections at -80°C.
Stability:	All frozen tissue sections are stable for 1 year from date of purchase if stored at -80°C without repeated freeze/thaws.

Product images:

4x Image



20x Image