

## Product datasheet for CS500765

### Frozen Tissue Sections, Myometrium

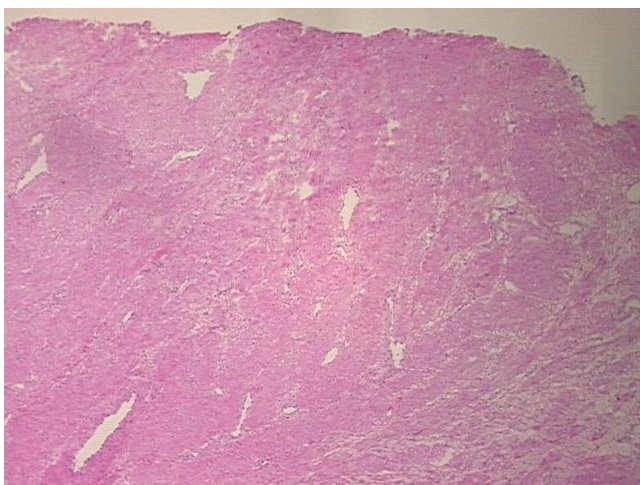
#### Product data:

Product Type:	Frozen Sections
Disease State:	Normal
Diagnosis Category:	Normal
Tissue:	Myometrium
Frozen Sample ID:	FR00003806
Case ID:	CI0000000087
Tissue of Origin:	Myometrium
Site of Finding:	Myometrium
Appearance:	R
Sample Diagnosis (from Pathology Verification):	Within normal limits
Normal:	100%
Lesional:	0%
Tumor:	0%
Tumor Hypo/Acellular Stroma:	0%
Tumor Hypercellular Stroma:	0%
Necrosis:	0%
CASE Diagnosis (from medical center path report):	Carcinoma of cervix, squamous cell, large cell, non-keratinizing
Age:	37
Gender:	Female
Race:	Black or African American
Tumor Grade:	Not Reported

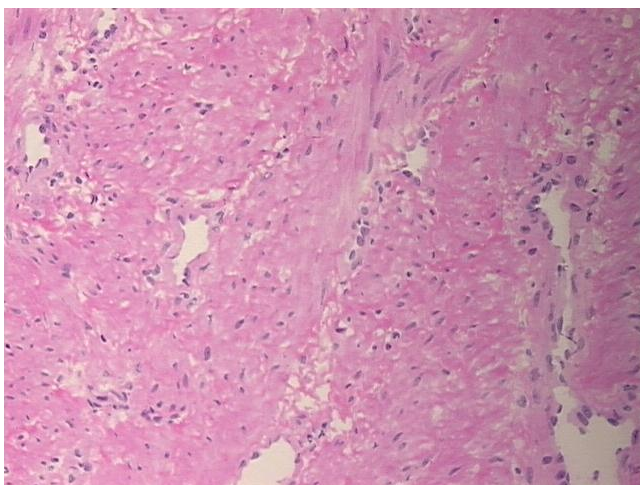


[View online »](#)

Minimum Stage Grouping:	IIIB
T (Extent of Primary Tumor):	T2b
N (Lymph node metastasis):	N1
M (Distant metastasis):	MX
Storage:	Store frozen tissue sections at -80°C.
Stability:	All frozen tissue sections are stable for 1 year from date of purchase if stored at -80°C without repeated freeze/thaws.

**Product images:**

4x Image



20x Image