

Product datasheet for **CS500660**

Frozen Tissue Sections, Ovary: left

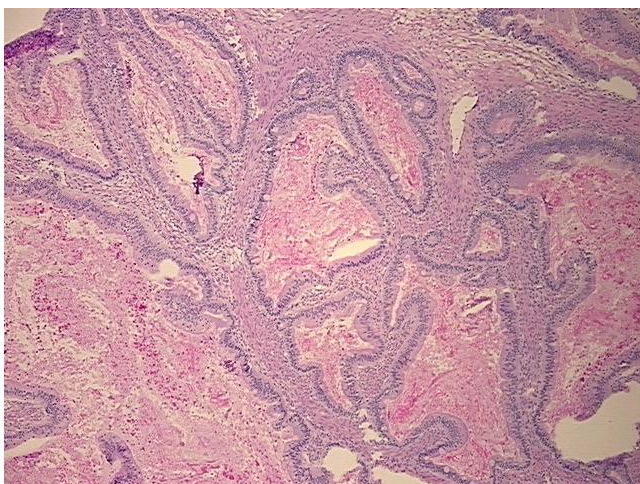
Product data:

Product Type:	Frozen Sections
Disease State:	Other Disease
Diagnosis Category:	Borderline Ovarian Tumor
Tissue:	Ovary
Frozen Sample ID:	FR00002F5F
Case ID:	CI0000000079
Tissue of Origin:	Ovary: left
Site of Finding:	Ovary: left
Appearance:	T
Sample Diagnosis (from Pathology Verification):	Tumor of ovary, mucinous, borderline
Normal:	0%
Lesional:	0%
Tumor:	35%
Tumor Hypo/Acellular Stroma:	25%
Tumor Hypercellular Stroma:	40%
Necrosis:	0%
Pathology Verification notes from H&E review:	acellular tumor stroma: 100% mucin
CASE Diagnosis (from medical center path report):	Tumor of ovary, mucinous, borderline
Age:	47
Gender:	Female
Race:	White or Caucasian

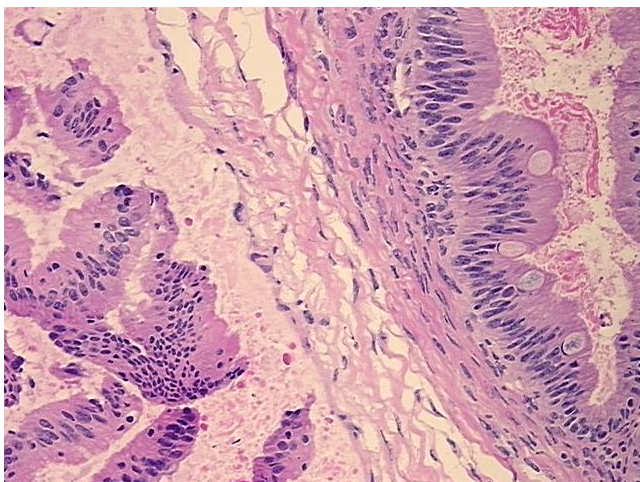


[View online »](#)

Tumor Grade:	AJCC GB: Borderline malignancy
Minimum Stage Grouping:	IA
T (Extent of Primary Tumor):	T1a
N (Lymph node metastasis):	NX
M (Distant metastasis):	MX
Storage:	Store frozen tissue sections at -80°C.
Stability:	All frozen tissue sections are stable for 1 year from date of purchase if stored at -80°C without repeated freeze/thaws.

Product images:

4x Image



20x Image