

Product datasheet for **CS500524**

Frozen Tissue Sections, Kidney

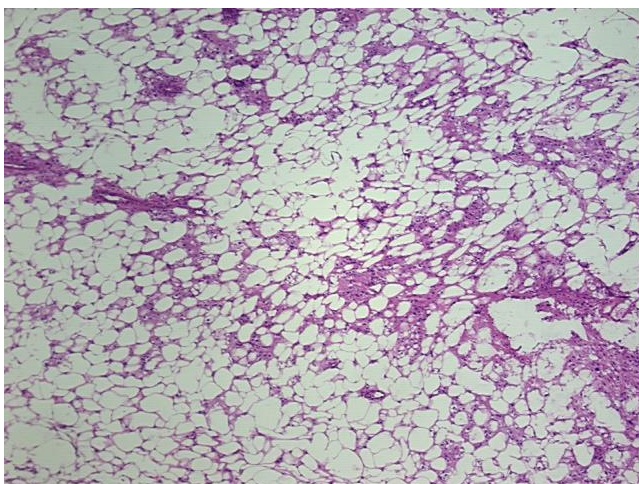
Product data:

Product Type:	Frozen Sections
Disease State:	Other Disease
Diagnosis Category:	Benign Tumors
Tissue:	Kidney
Frozen Sample ID:	FR00002C04
Case ID:	CI0000000068
Tissue of Origin:	Kidney
Site of Finding:	Kidney
Appearance:	T
Sample Diagnosis (from Pathology Verification):	Angiomyolipoma of kidney
Normal:	0%
Lesional:	0%
Tumor:	100%
Tumor Hypo/Acellular Stroma:	0%
Tumor Hypercellular Stroma:	0%
Necrosis:	0%
Pathology Verification notes from H&E review:	Angiomyolipoma with predominant lipomatous component
CASE Diagnosis (from medical center path report):	Angiomyolipoma of kidney
Age:	76
Gender:	Female
Race:	White or Caucasian

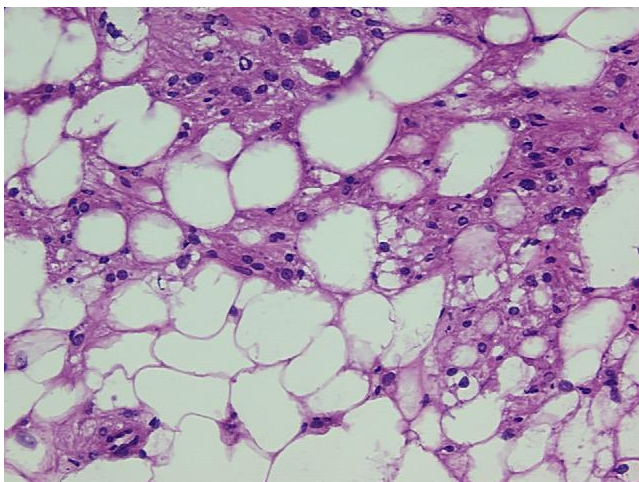


[View online »](#)

Tumor Grade:	Not Reported
Minimum Stage Grouping:	Not Reported
T (Extent of Primary Tumor):	Not Reported
N (Lymph node metastasis):	Not Reported
M (Distant metastasis):	Not Reported
Storage:	Store frozen tissue sections at -80°C.
Stability:	All frozen tissue sections are stable for 1 year from date of purchase if stored at -80°C without repeated freeze/thaws.

Product images:

4x Image



20x Image