

## Product datasheet for **CS500344**

### Frozen Tissue Sections, Lung

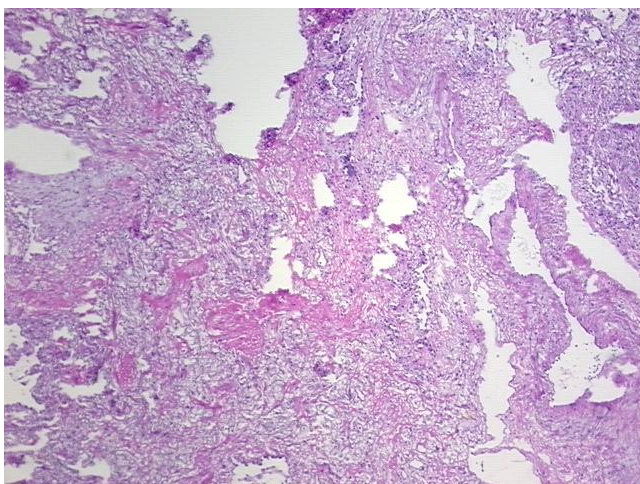
#### Product data:

Product Type:	Frozen Sections
Disease State:	Other Disease
Diagnosis Category:	Pneumonia
Tissue:	Lung
Frozen Sample ID:	FR00002485
Case ID:	CI0000000053
Tissue of Origin:	Lung
Site of Finding:	Lung
Appearance:	L
Sample Diagnosis (from Pathology Verification):	Pneumonia, interstitial, chronic
Normal:	40%
Lesional:	60%
Tumor:	0%
Tumor Hypo/Acellular Stroma:	0%
Tumor Hypercellular Stroma:	0%
Necrosis:	0%
Pathology Verification notes from H&E review:	90% alveoli, 5% bronchioles, 5% fibrovascular septa; lesion inflammation 1+ MAC
CASE Diagnosis (from medical center path report):	Carcinoma of lung, squamous cell
Age:	74
Gender:	Male
Race:	White or Caucasian

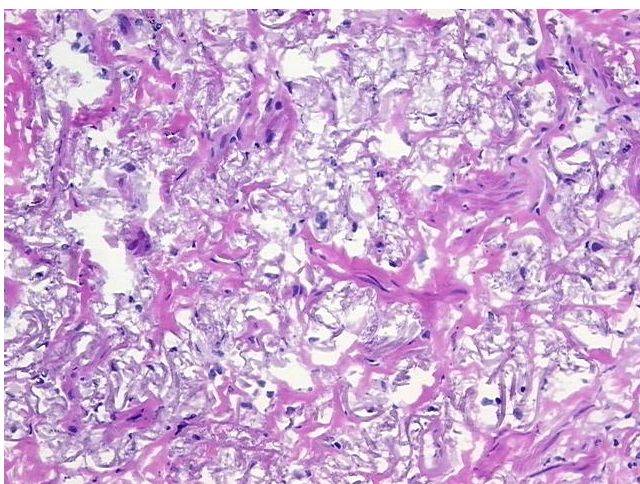


[View online »](#)

Tumor Grade:	AJCC G3: Poorly differentiated
Minimum Stage Grouping:	IIIA
T (Extent of Primary Tumor):	T1
N (Lymph node metastasis):	N2
M (Distant metastasis):	MX
Storage:	Store frozen tissue sections at -80°C.
Stability:	All frozen tissue sections are stable for 1 year from date of purchase if stored at -80°C without repeated freeze/thaws.

**Product images:**

4x Image



20x Image