

## Product datasheet for **CS500029**

### Frozen Tissue Sections, Lung

#### Product data:

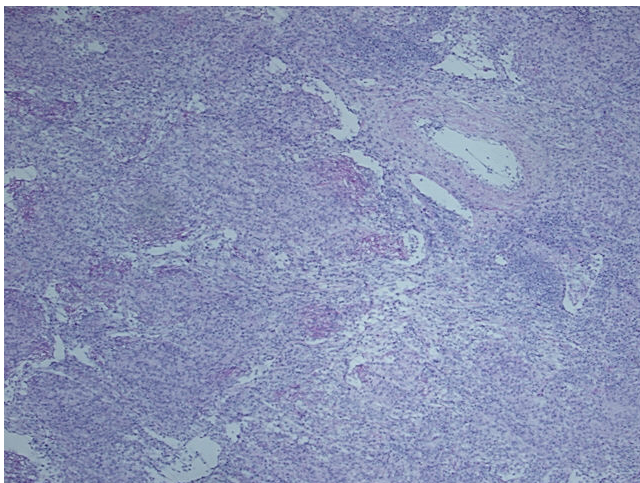
Product Type:	Frozen Sections
Disease State:	Other Disease
Diagnosis Category:	Inflammation (various)
Tissue:	Lung
Frozen Sample ID:	FR000016AA
Case ID:	CI0000000003
Tissue of Origin:	Lung
Site of Finding:	Lung
Appearance:	L
Sample Diagnosis (from Pathology Verification):	Pneumonitis, granulomatous
Normal:	0%
Lesional:	100%
Tumor:	0%
Tumor Hypo/Acellular Stroma:	0%
Tumor Hypercellular Stroma:	0%
Necrosis:	0%
Pathology Verification notes from H&E review:	5% alveoli, 95% fibrous tissue; Lung with chronic granulomatous inflammation; No tumor seen
CASE Diagnosis (from medical center path report):	Carcinoma of lung, sarcomatoid
Age:	81
Gender:	Male
Race:	White or Caucasian



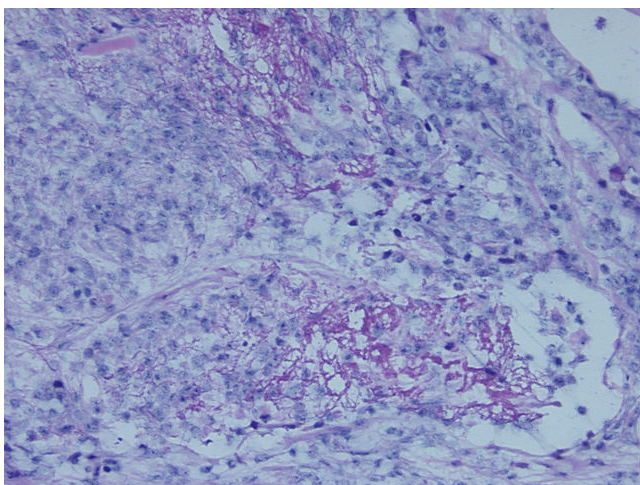
[View online »](#)

<b>Tumor Grade:</b>	AJCC G3: Poorly differentiated
<b>Minimum Stage Grouping:</b>	IIIB
<b>T (Extent of Primary Tumor):</b>	T4
<b>N (Lymph node metastasis):</b>	N0
<b>M (Distant metastasis):</b>	MX
<b>Diagnostic Test Results:</b>	GMS ~ Grocott methenamine silver stain,Negative; Acid-fast bacteria ~ AFB ~ Ziehl-Neelsen acid fast,Negative
<b>Storage:</b>	Store frozen tissue sections at -80°C.
<b>Stability:</b>	All frozen tissue sections are stable for 1 year from date of purchase if stored at -80°C without repeated freeze/thaws.

### Product images:



4x Image



20x Image