

Product datasheet for CS500001

Frozen Tissue Sections, Endometrium

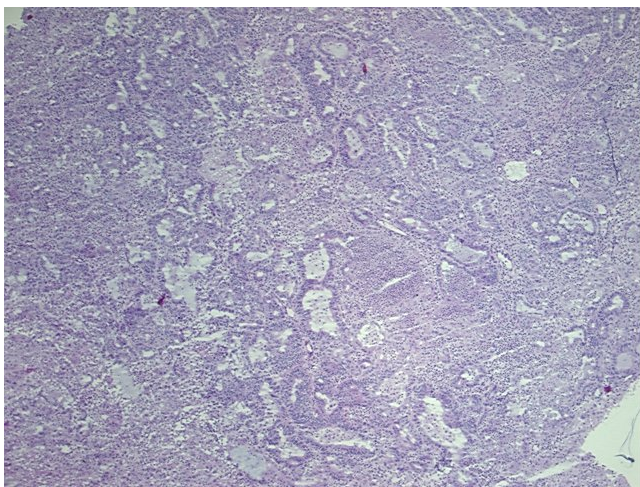
Product data:

Product Type:	Frozen Sections
Disease State:	Cancer
Diagnosis Category:	Endometrial Cancer
Tissue:	Endometrium
Frozen Sample ID:	FR000015ED
Case ID:	CI0000000001
Tissue of Origin:	Endometrium
Site of Finding:	Uterus
Appearance:	T
Sample Diagnosis (from Pathology Verification):	Adenocarcinoma of endometrium, squamous features
Normal:	60%
Lesional:	0%
Tumor:	40%
Tumor Hypo/Acellular Stroma:	0%
Tumor Hypercellular Stroma:	0%
Necrosis:	0%
Pathology Verification notes from H&E review:	Sample contains a spectrum of normal, hyperplastic and adenocarcinoma cells; Stroma contains numerous mixed inflammatory cells; normal component contains 10% endometrium, 5% stroma, 45% myometrium
CASE Diagnosis (from medical center path report):	Adenocarcinoma of endometrium, squamous features
Age:	71
Gender:	Female

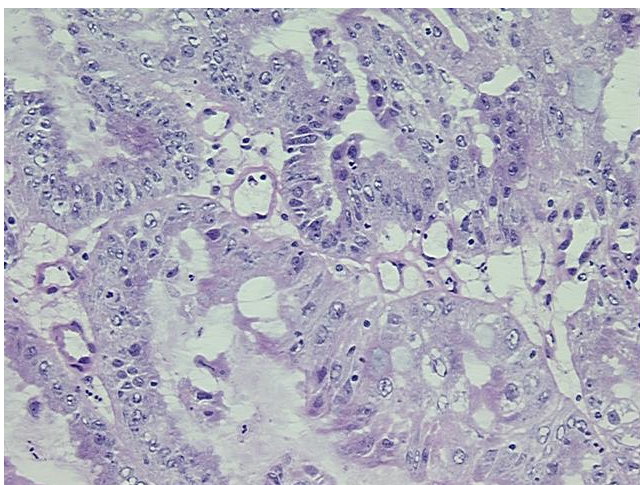


[View online »](#)

Race:	Black or African American
Tumor Grade:	FIGO G1: Well differentiated
Minimum Stage Grouping:	IB
T (Extent of Primary Tumor):	T1b
N (Lymph node metastasis):	NX
M (Distant metastasis):	MX
Storage:	Store frozen tissue sections at -80°C.
Stability:	All frozen tissue sections are stable for 1 year from date of purchase if stored at -80°C without repeated freeze/thaws.

Product images:

4x Image



20x Image