

Product datasheet for CR566350

Tissue Total RNA, Lung: left upper lobe

Product data:

Product Type:	Total RNA
Disease State:	Cancer
Diagnosis Category:	Lung Cancer
Tissue:	Lung
Frozen Sample ID:	FR00042777
Case ID:	CI0000019009
Prep:	1
Vial ID:	RN000027DC
Tissue of Origin:	Lung: left upper lobe
Site of Finding:	Lung: left upper lobe
Appearance:	Tumor
Sample Diagnosis (from Pathology Verification):	Adenocarcinoma of lung, papillary
Normal:	0%
Lesional:	0%
Tumor:	75%
Tumor Hypo/Acellular Stroma:	15%
Tumor Hypercellular Stroma:	10%
Necrosis:	0%
Pathology Verification notes from H&E review:	Inflammation: Mild Lymphoplasmacytic infiltrate, Mild Macrophages
Bioanalyzer Ratio (28S/18S):	1.65



[View online »](#)

CASE Diagnosis (from medical center path report): Adenocarcinoma of lung, papillary

Age: 69

Gender: Male

Race: White or Caucasian

Tumor Grade: AJCC G2: Moderately differentiated

Minimum Stage IB

Grouping:

T (Extent of Primary Tumor): T2

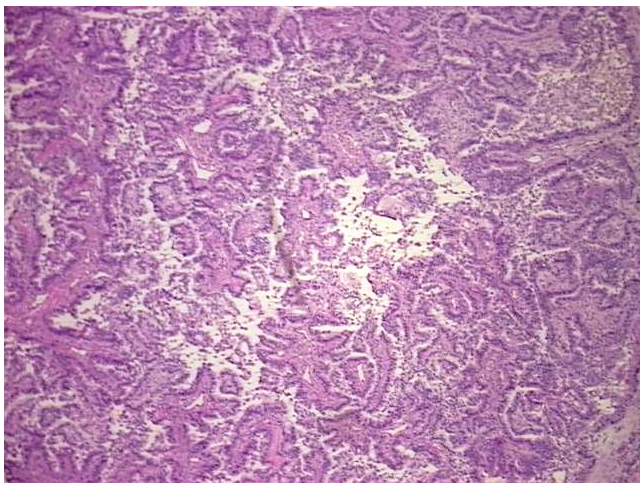
N (Lymph node metastasis): N0

M (Distant metastasis): MX

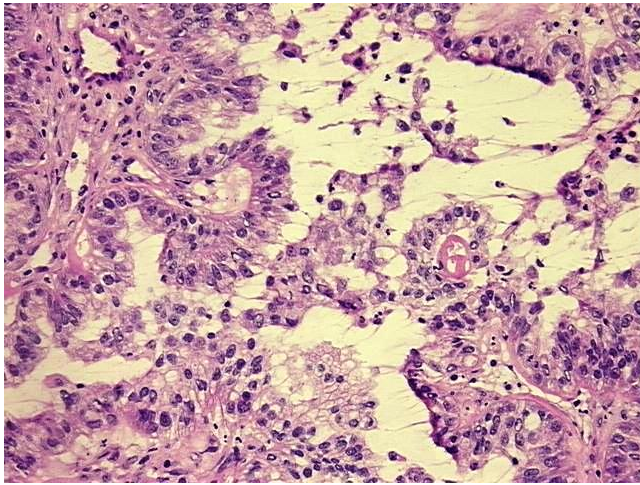
Storage: Store tissue total RNA at -80°C.

Stability: These products are stable for one year from date of shipping when stored at -80°C without repeated freeze/thaws.

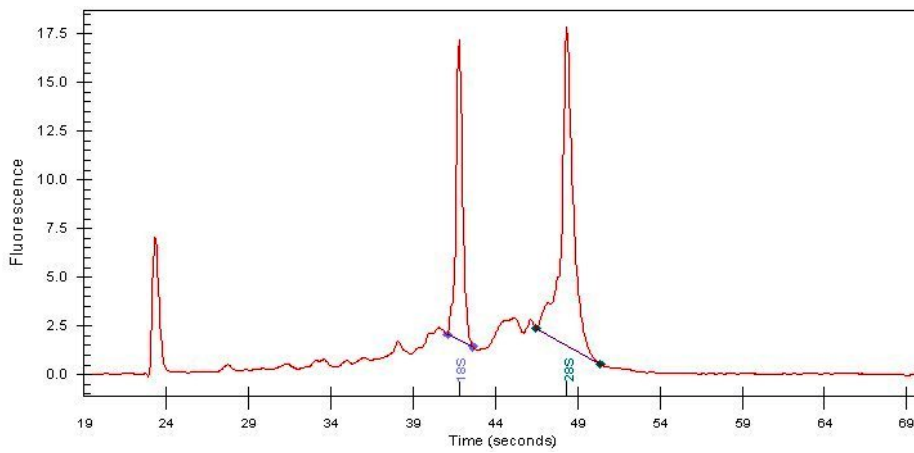
Product images:



4x Image



20x Image



RNA Electropherogram Image



RNA RT-PCR Image