

## Product datasheet for CR566345

### Tissue Total RNA, Lung: right upper lobe

#### Product data:

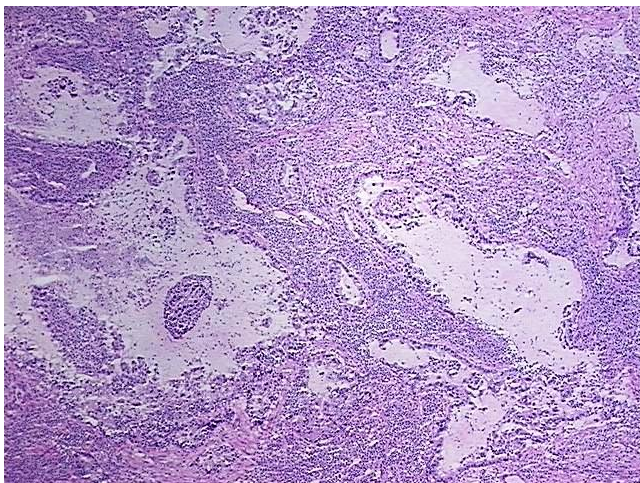
Product Type:	Total RNA
Disease State:	Cancer
Diagnosis Category:	Lung Cancer
Tissue:	Lung
Frozen Sample ID:	FR00035D28
Case ID:	CI0000016555
Prep:	4
Vial ID:	RN000027BB
Tissue of Origin:	Lung: right upper lobe
Site of Finding:	Lung: right upper lobe
Appearance:	Tumor
Sample Diagnosis (from Pathology Verification):	Adenocarcinoma of lung
Normal:	25%
Lesional:	0%
Tumor:	40%
Tumor Hypo/Acellular Stroma:	25%
Tumor Hypercellular Stroma:	10%
Necrosis:	0%
Pathology Verification notes from H&E review:	Tumor Stroma (Cellular): Desmoplastic reaction; Tumor Stroma (Hypo/Acellular): Mucin; Inflammation: Severe Lymphoplasmacytic infiltrate
Bioanalyzer Ratio (28S/18S):	1.6



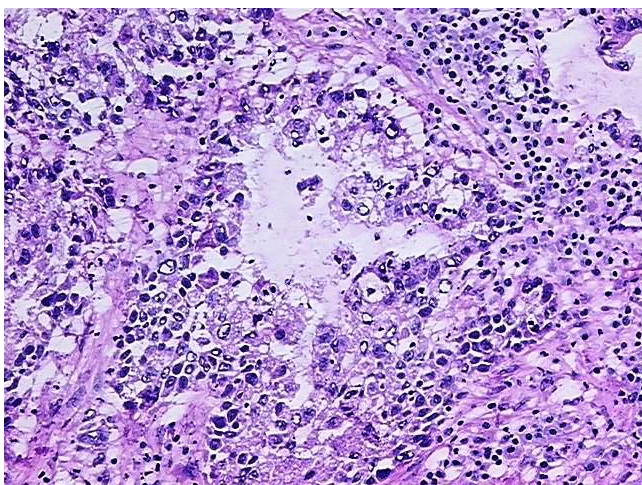
[View online »](#)

CASE Diagnosis (from medical center path report):	Adenocarcinoma of lung
Age:	46
Gender:	Female
Race:	White or Caucasian
Tumor Grade:	AJCC G2: Moderately differentiated
Minimum Stage Grouping:	IV
T (Extent of Primary Tumor):	T2
N (Lymph node metastasis):	N2
M (Distant metastasis):	M1
Storage:	Store tissue total RNA at -80°C.
Stability:	These products are stable for one year from date of shipping when stored at -80°C without repeated freeze/thaws.

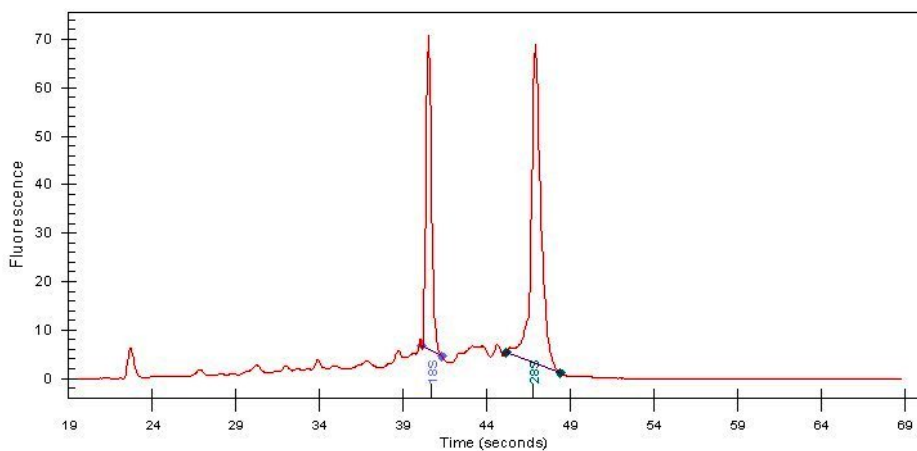
### Product images:



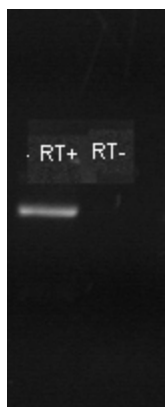
4x Image



20x Image



RNA Electropherogram Image



RNA RT-PCR Image