

Product datasheet for CR566320

Tissue Total RNA, Ovary: left

Product data:

Product Type:	Total RNA
Disease State:	Cancer
Diagnosis Category:	Ovarian Cancer
Tissue:	Ovary
Frozen Sample ID:	FR65EE2324
Case ID:	CI0000013332
Prep:	4
Vial ID:	RN000027BE
Tissue of Origin:	Ovary: left
Site of Finding:	Ovary: left
Appearance:	Tumor
Sample Diagnosis (from Pathology Verification):	Adenocarcinoma of ovary, serous
Normal:	0%
Lesional:	0%
Tumor:	65%
Tumor Hypo/Acellular Stroma:	20%
Tumor Hypercellular Stroma:	15%
Necrosis:	0%
Pathology Verification notes from H&E review:	Tumor Stroma (Cellular): Desmoplastic reaction; Tumor Stroma (Hypo/Acellular): Fibrosis
Bioanalyzer Ratio (28S/18S):	1.39



[View online »](#)

CASE Diagnosis (from medical center path report): Adenocarcinoma of ovary, serous

Age: 75

Gender: Female

Race: White or Caucasian

Tumor Grade: FIGO G2: Moderately differentiated

Minimum Stage Grouping: IIIB

T (Extent of Primary Tumor): T3b

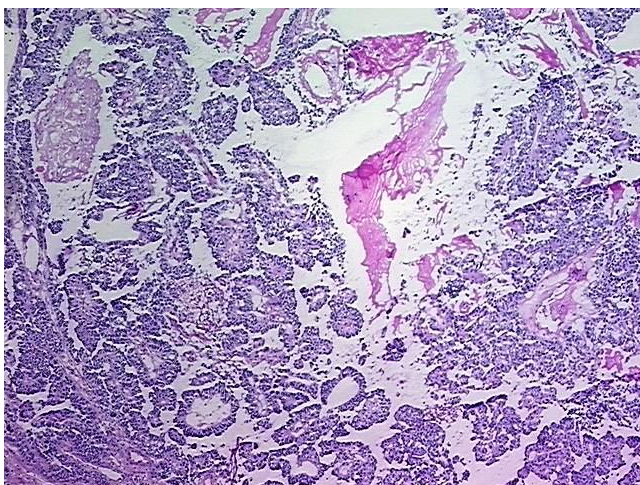
N (Lymph node metastasis): NX

M (Distant metastasis): MX

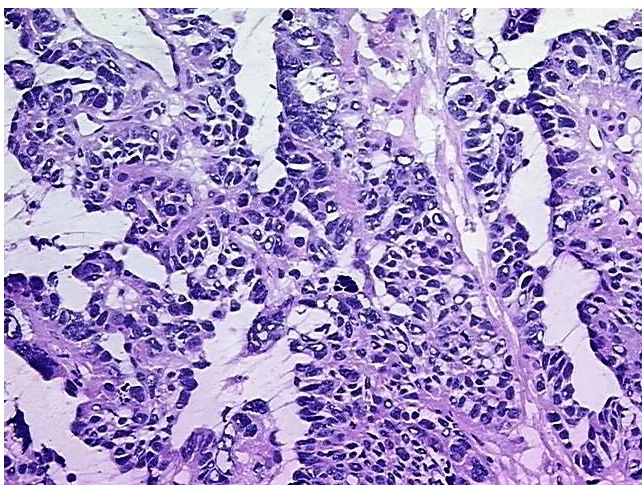
Storage: Store tissue total RNA at -80°C.

Stability: These products are stable for one year from date of shipping when stored at -80°C without repeated freeze/thaws.

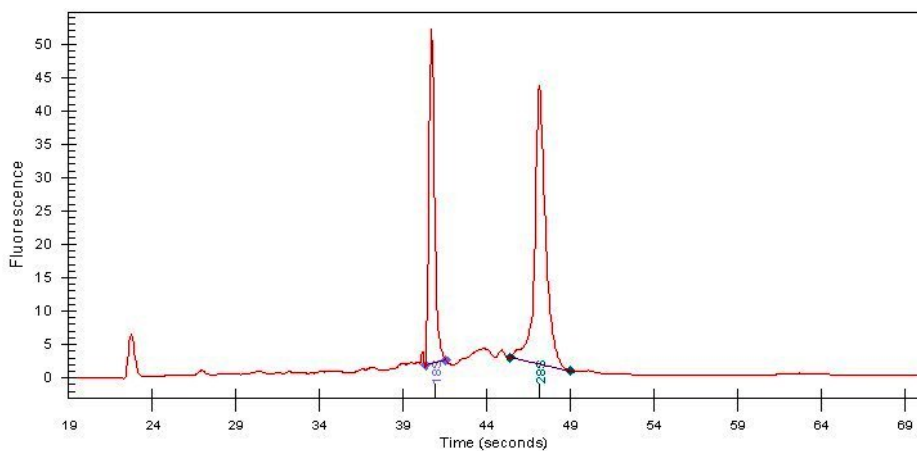
Product images:



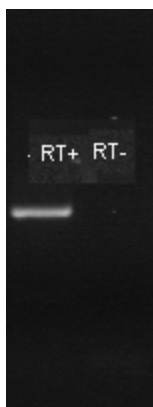
4x Image



20x Image



RNA Electropherogram Image



RNA RT-PCR Image