

Product datasheet for CR566313

Tissue Total RNA, Ovary

Product data:

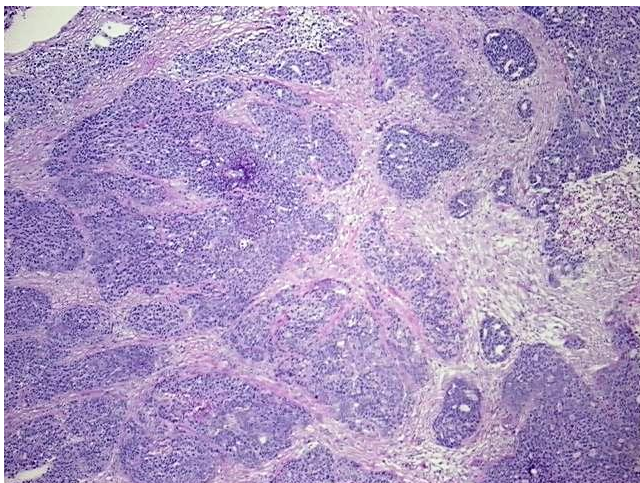
Product Type:	Total RNA
Disease State:	Cancer
Diagnosis Category:	Ovarian Cancer
Tissue:	Ovary
Frozen Sample ID:	FR0002FE6C
Case ID:	CI0000013345
Prep:	2
Vial ID:	RN000027C0
Tissue of Origin:	Ovary
Site of Finding:	Abdominal wall
Appearance:	Tumor
Sample Diagnosis (from Pathology Verification):	Adenocarcinoma of ovary, endometrioid, metastatic
Normal:	0%
Lesional:	0%
Tumor:	50%
Tumor Hypo/Acellular Stroma:	15%
Tumor Hypercellular Stroma:	20%
Necrosis:	15%
Pathology Verification notes from H&E review:	Tumor Stroma (Cellular): Desmoplastic reaction; Tumor Stroma (Hypo/Acellular): Fibrosis
Bioanalyzer Ratio (28S/18S):	1.27



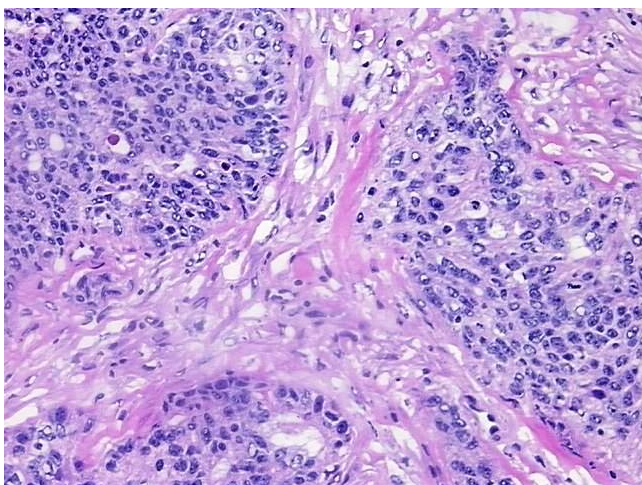
[View online »](#)

CASE Diagnosis (from medical center path report):	Adenocarcinoma of ovary, endometrioid, metastatic
Age:	48
Gender:	Female
Race:	White or Caucasian
Tumor Grade:	FIGO G3: Poorly differentiated
Minimum Stage Grouping:	IIIC
T (Extent of Primary Tumor):	T3c
N (Lymph node metastasis):	NX
M (Distant metastasis):	MX
Storage:	Store tissue total RNA at -80°C.
Stability:	These products are stable for one year from date of shipping when stored at -80°C without repeated freeze/thaws.

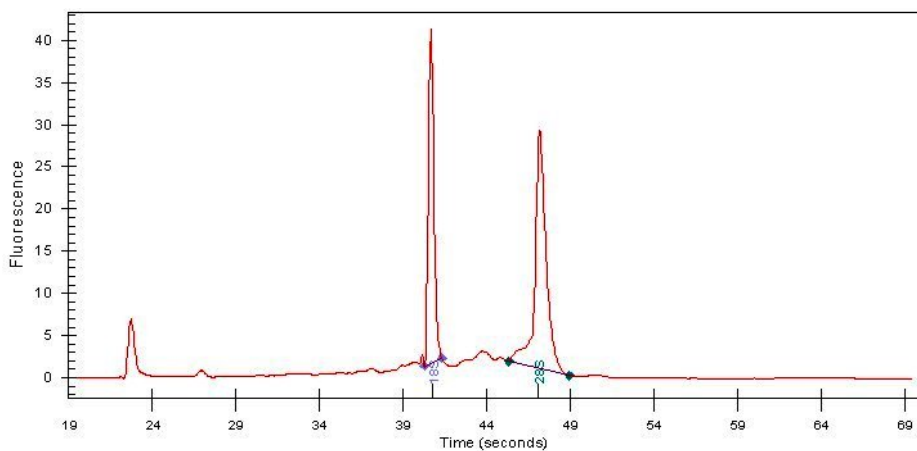
Product images:



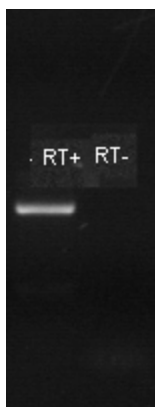
4x Image



20x Image



RNA Electropherogram Image



RNA RT-PCR Image