

## Product datasheet for **CR565914**

### Tissue Total RNA, Breast

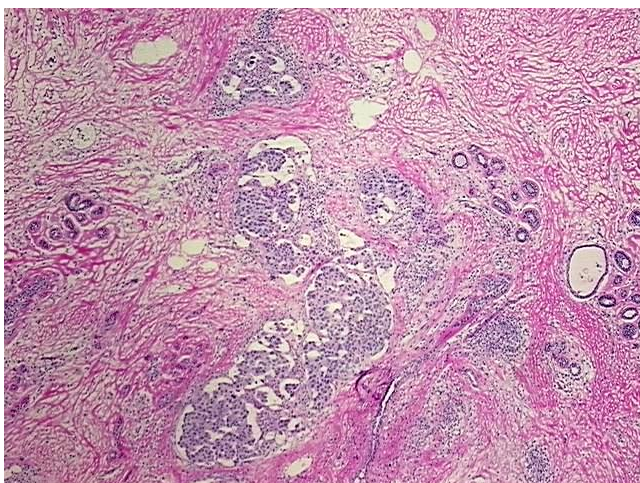
#### Product data:

Product Type:	Total RNA
Disease State:	Cancer
Diagnosis Category:	Breast Cancer
Tissue:	Breast
Frozen Sample ID:	FR5B33D8BE
Case ID:	CI0000017650
Prep:	1
Vial ID:	RN000027A6
Tissue of Origin:	Breast
Site of Finding:	Breast
Appearance:	Tumor
Sample Diagnosis (from Pathology Verification):	Adenocarcinoma of breast, ductal
Normal:	20%
Lesional:	0%
Tumor:	55%
Tumor Hypo/Acellular Stroma:	0%
Tumor Hypercellular Stroma:	20%
Necrosis:	5%
Bioanalyzer Ratio (28S/18S):	1.59
CASE Diagnosis (from medical center path report):	Adenocarcinoma of breast, ductal
Age:	50

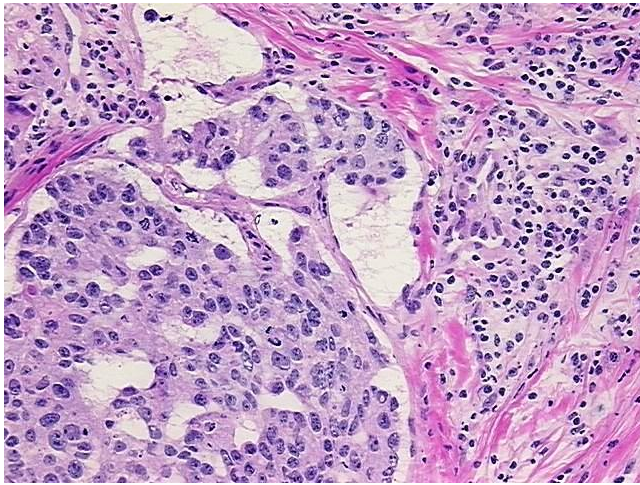


[View online »](#)

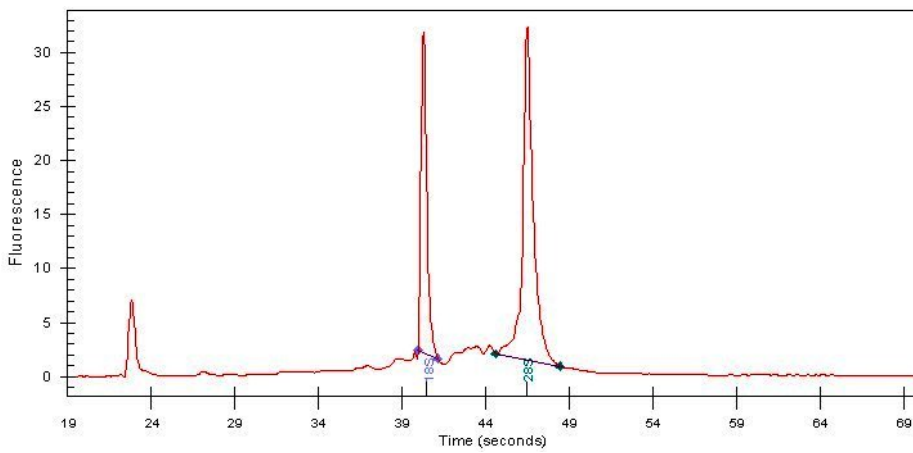
Gender:	Female
Race:	Asian
Tumor Grade:	Nottingham G3: 8-9 points High combined grade (unfavorable)
Minimum Stage Grouping:	IIIC
T (Extent of Primary Tumor):	T3
N (Lymph node metastasis):	N3a
M (Distant metastasis):	MX
Storage:	Store tissue total RNA at -80°C.
Stability:	These products are stable for one year from date of shipping when stored at -80°C without repeated freeze/thaws.

**Product images:**

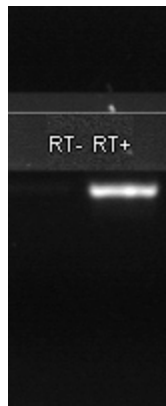
4x Image



20x Image



RNA Electropherogram Image



RNA RT-PCR Image