

## Product datasheet for CR563029

### Tissue Total RNA, Cervix

#### Product data:

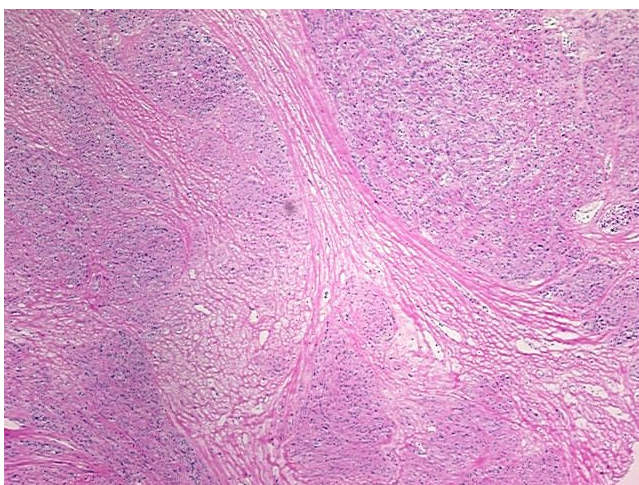
Product Type:	Total RNA
Disease State:	Cancer
Diagnosis Category:	Sarcoma
Tissue:	Smooth muscle
Frozen Sample ID:	FR00002811
Case ID:	CU0000000833
Prep:	2
Vial ID:	RN00001BBE
Tissue of Origin:	Cervix
Site of Finding:	Uterus
Appearance:	Tumor
Sample Diagnosis (from Pathology Verification):	Leiomyosarcoma
Normal:	0%
Lesional:	0%
Tumor:	55%
Tumor Hypo/Acellular Stroma:	0%
Tumor Hypercellular Stroma:	45%
Necrosis:	0%
Pathology Verification notes from H&E review:	Tumor: arising in the cervix
Bioanalyzer Ratio (28S/18S):	1.26



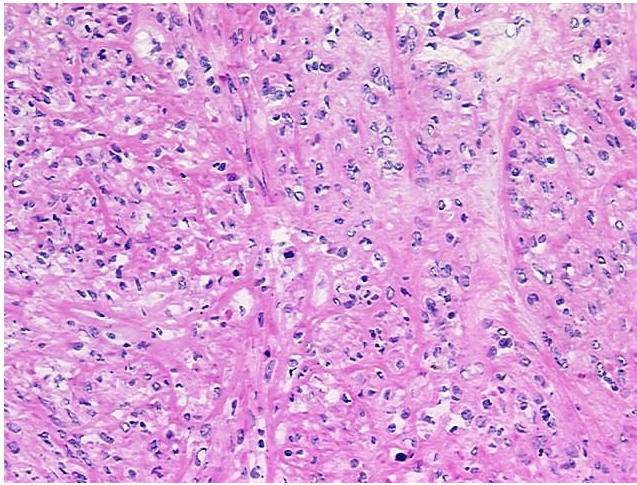
[View online »](#)

<b>CASE Diagnosis (from medical center path report):</b>	Leiomyosarcoma
<b>Age:</b>	51
<b>Gender:</b>	Female
<b>Tumor Grade:</b>	FIGO G3: Poorly differentiated
<b>Minimum Stage Grouping:</b>	IIIB
<b>T (Extent of Primary Tumor):</b>	T3b
<b>N (Lymph node metastasis):</b>	NX
<b>M (Distant metastasis):</b>	MX
<b>Diagnostic Test Results:</b>	Vimentin ~ VIM ! by IHC,Positive; S100 protein,Negative; Desmin ! by IHC,Positive, focal; Cytokeratin AE1/AE3 ~ AE1/AE3 ! by IHC,Positive, focal; MSA ~ Muscle Specific Actin,Positive
<b>Storage:</b>	Store tissue total RNA at -80°C.
<b>Stability:</b>	These products are stable for one year from date of shipping when stored at -80°C without repeated freeze/thaws.

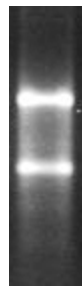
### Product images:



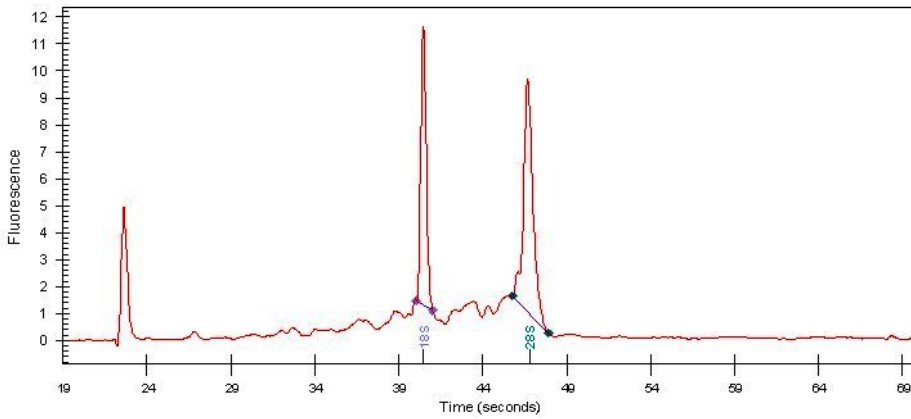
4x Image



20x Image



RNA Gel Image



RNA Electropherogram Image



RNA RT-PCR Image