

## Product datasheet for **CR562988**

### Tissue Total RNA, Kidney

#### Product data:

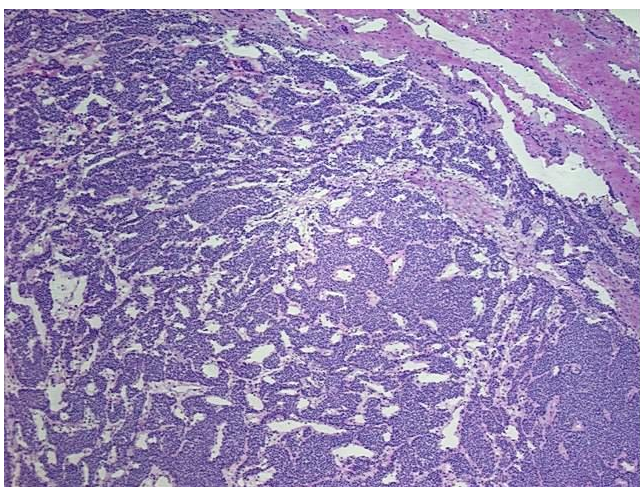
Product Type:	Total RNA
Disease State:	Cancer
Diagnosis Category:	Sarcoma
Tissue:	Soft tissue
Frozen Sample ID:	FR00003D25
Case ID:	CU0000001159
Prep:	6
Vial ID:	RN00001753
Tissue of Origin:	Kidney
Site of Finding:	Kidney
Appearance:	Tumor
Sample Diagnosis (from Pathology Verification):	Sarcoma
Normal:	10%
Lesional:	0%
Tumor:	80%
Tumor Hypo/Acellular Stroma:	0%
Tumor Hypercellular Stroma:	10%
Necrosis:	0%
Pathology Verification notes from H&E review:	Sample contains 10% normal fibrous capsule
Bioanalyzer Ratio (28S/18S):	2.03



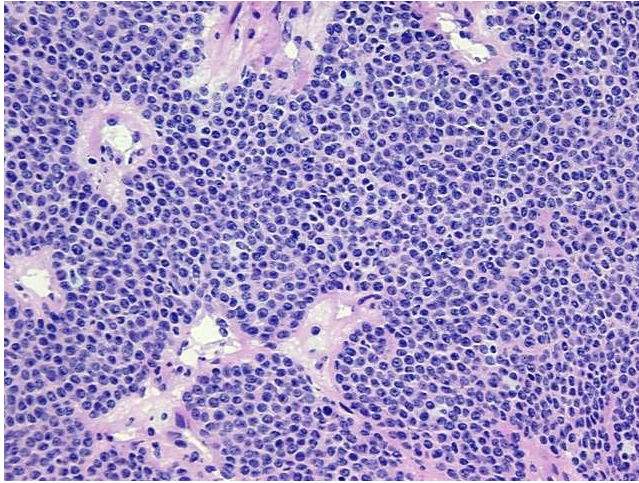
[View online »](#)

<b>CASE Diagnosis (from medical center path report):</b>	Tumor of kidney, sarcomatoid features
<b>Age:</b>	41
<b>Gender:</b>	Female
<b>Tumor Grade:</b>	Fuhrman G3: Nuclei very irregular
<b>Minimum Stage Grouping:</b>	Not Reported
<b>T (Extent of Primary Tumor):</b>	Not Reported
<b>N (Lymph node metastasis):</b>	Not Reported
<b>M (Distant metastasis):</b>	Not Reported
<b>Storage:</b>	Store tissue total RNA at -80°C.
<b>Stability:</b>	These products are stable for one year from date of shipping when stored at -80°C without repeated freeze/thaws.

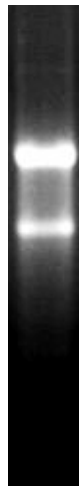
### Product images:



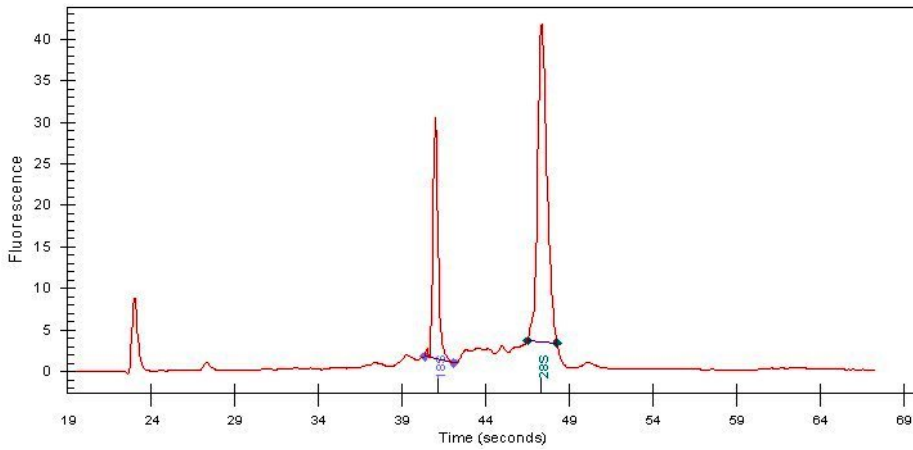
4x Image



20x Image



RNA Gel Image



RNA Electropherogram Image



RNA RT-PCR Image