

Product datasheet for CR562975

Tissue Total RNA, Ovary

Product data:

Product Type:	Total RNA
Disease State:	Cancer
Diagnosis Category:	Ovarian Cancer
Tissue:	Ovary
Frozen Sample ID:	FR00003A56
Case ID:	CU0000001102
Prep:	1
Vial ID:	RN000039CE
Tissue of Origin:	Ovary
Site of Finding:	Ovary
Appearance:	Tumor
Sample Diagnosis (from Pathology Verification):	Adenocarcinoma of ovary, clear cell, papillary serous
Normal:	0%
Lesional:	0%
Tumor:	75%
Tumor Hypo/Acellular Stroma:	10%
Tumor Hypercellular Stroma:	5%
Necrosis:	10%
Pathology Verification notes from H&E review:	Epithelial carcinoma of ovary, clear cell and papillary serous types
Bioanalyzer Ratio (28S/18S):	1.38



[View online »](#)

CASE Diagnosis (from medical center path report): Adenocarcinoma of ovary, clear cell, papillary serous

Age: 56

Gender: Female

Tumor Grade: FIGO G3: Poorly differentiated

Minimum Stage Grouping: IIIC

T (Extent of Primary Tumor): T1c

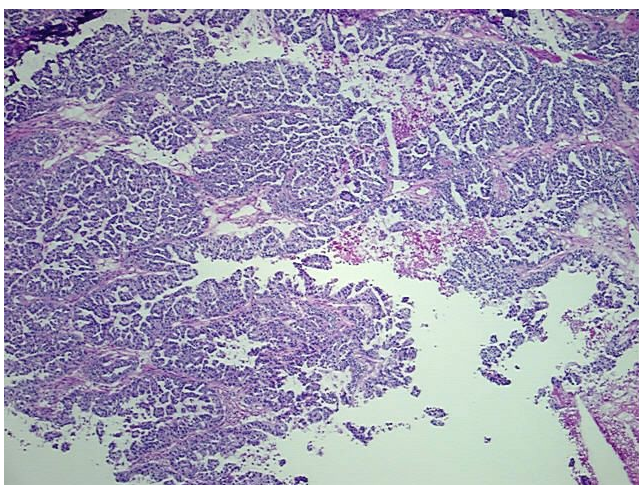
N (Lymph node metastasis): N1

M (Distant metastasis): MX

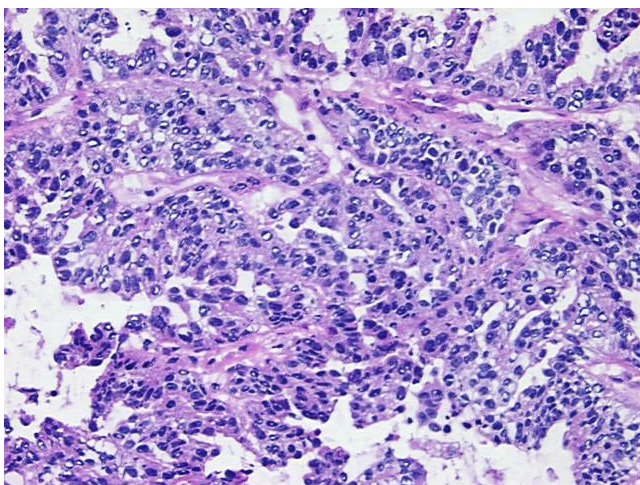
Storage: Store tissue total RNA at -80°C.

Stability: These products are stable for one year from date of shipping when stored at -80°C without repeated freeze/thaws.

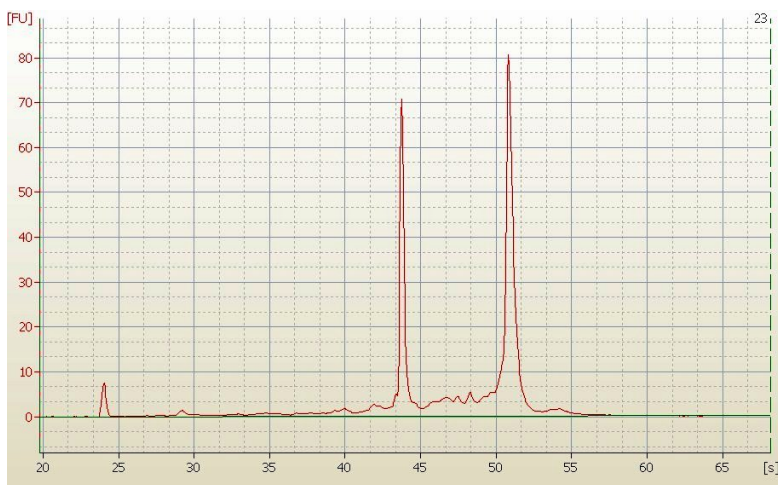
Product images:



4x Image



20x Image



RNA Electropherogram Image



RNA RT-PCR Image