

Product datasheet for CR562973

Tissue Total RNA, Unknown tissue

Product data:

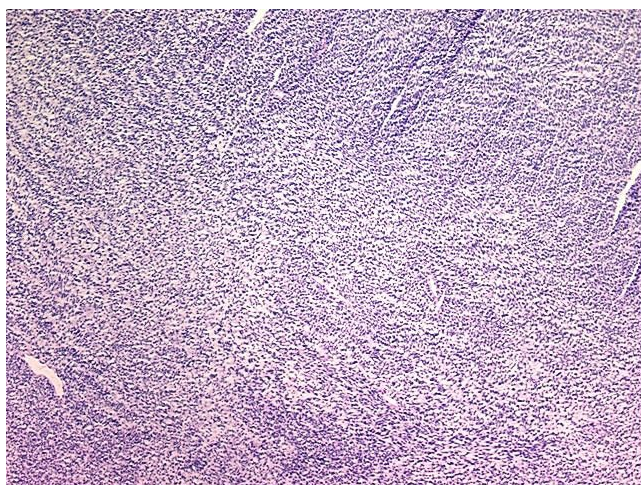
Product Type:	Total RNA
Disease State:	Cancer
Diagnosis Category:	Sarcoma
Tissue:	Soft tissue
Frozen Sample ID:	FR00004DA6
Case ID:	CU0000001244
Prep:	1
Vial ID:	RN00003C7F
Tissue of Origin:	Unknown tissue
Site of Finding:	Brain
Appearance:	Tumor
Sample Diagnosis (from Pathology Verification):	Sarcoma, spindle cell, metastatic
Normal:	0%
Lesional:	0%
Tumor:	100%
Tumor Hypo/Acellular Stroma:	0%
Tumor Hypercellular Stroma:	0%
Necrosis:	0%
Pathology Verification notes from H&E review:	Brain with metastatic spindle cell sarcoma
Bioanalyzer Ratio (28S/18S):	1.74



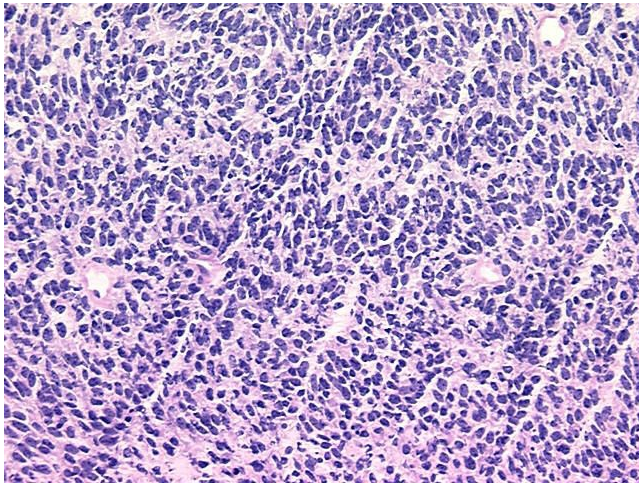
[View online »](#)

CASE Diagnosis (from medical center path report):	Sarcoma, spindle cell, metastatic
Age:	26
Gender:	Male
Tumor Grade:	Not Reported
Minimum Stage Grouping:	Not Reported
T (Extent of Primary Tumor):	Not Reported
N (Lymph node metastasis):	Not Reported
M (Distant metastasis):	Not Reported
Storage:	Store tissue total RNA at -80°C.
Stability:	These products are stable for one year from date of shipping when stored at -80°C without repeated freeze/thaws.

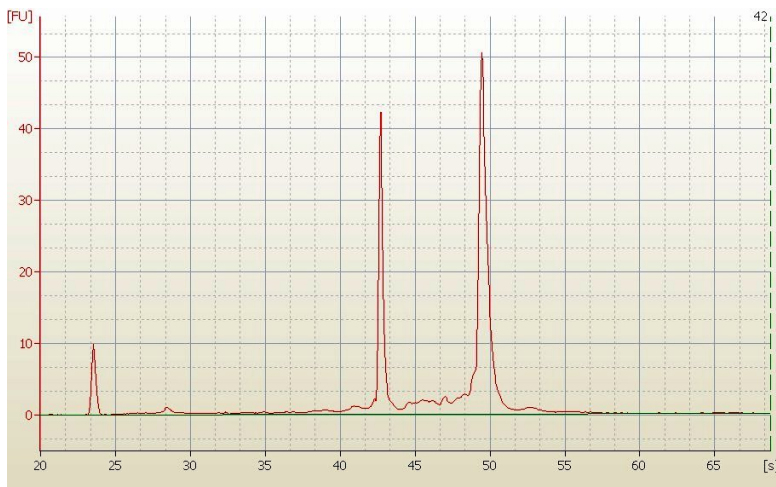
Product images:



4x Image



20x Image



RNA Electropherogram Image



RNA RT-PCR Image