

## Product datasheet for CR562952

### Tissue Total RNA, Lung

#### Product data:

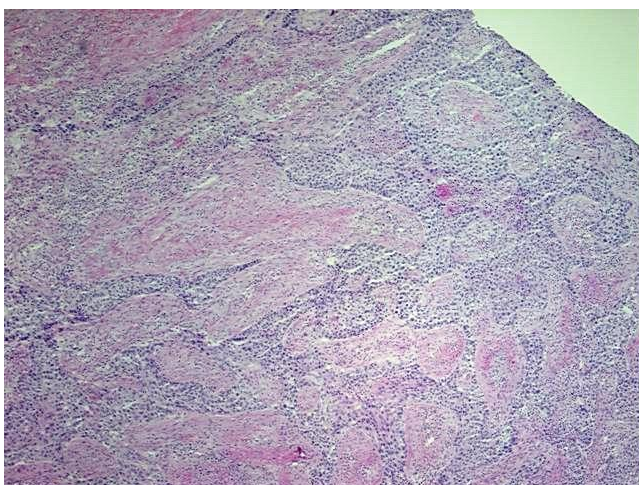
|   |   |
|---|---|
| Product Type:                                   | Total RNA   |
| Disease State:                                  | Cancer  |
| Diagnosis Category:                             | Lung Cancer   |
| Tissue:   | Lung  |
| Frozen Sample ID:                               | FR00001644  |
| Case ID:  | CU0000000602  |
| Prep:   | 1   |
| Vial ID:  | RN000001F7  |
| Tissue of Origin:                               | Lung  |
| Site of Finding:                                | Lung  |
| Appearance:                                     | Tumor   |
| Sample Diagnosis (from Pathology Verification): | Carcinoma of lung, squamous cell  |
| Normal:   | 0%  |
| Lesional:                                       | 0%  |
| Tumor:  | 50%   |
| Tumor Hypo/Acellular Stroma:                    | 40%   |
| Tumor Hypercellular Stroma:                     | 0%  |
| Necrosis:                                       | 10%   |
| Pathology Verification notes from H&E review:   | Intense polymorphonuclear and chronic inflammation infiltrate present in tumor stroma |
| Bioanalyzer Ratio (28S/18S):                    | 1.38  |



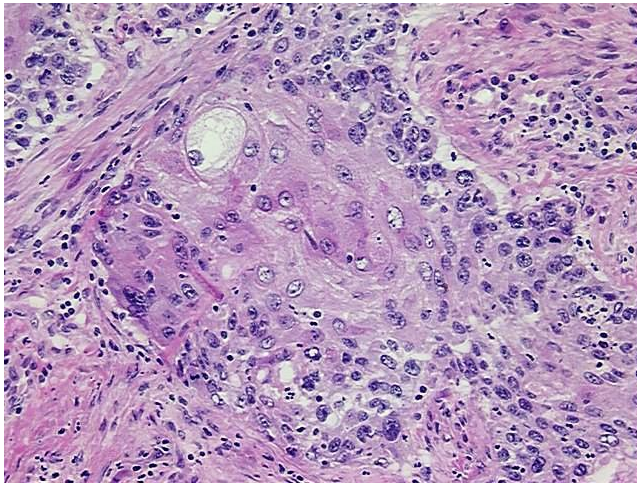
[View online »](#)

|  |  |
|--|--|
| <b>CASE Diagnosis (from medical center path report):</b> | Carcinoma of lung, squamous cell   |
| <b>Age:</b>  | 76   |
| <b>Gender:</b>   | Male   |
| <b>Tumor Grade:</b>                                      | AJCC G2: Moderately differentiated   |
| <b>Minimum Stage Grouping:</b>                           | IIB  |
| <b>T (Extent of Primary Tumor):</b>                      | T2   |
| <b>N (Lymph node metastasis):</b>                        | N1   |
| <b>M (Distant metastasis):</b>                           | MX   |
| <b>Storage:</b>  | Store tissue total RNA at -80°C.   |
| <b>Stability:</b>  | These products are stable for one year from date of shipping when stored at -80°C without repeated freeze/thaws. |

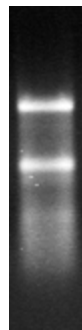
### Product images:



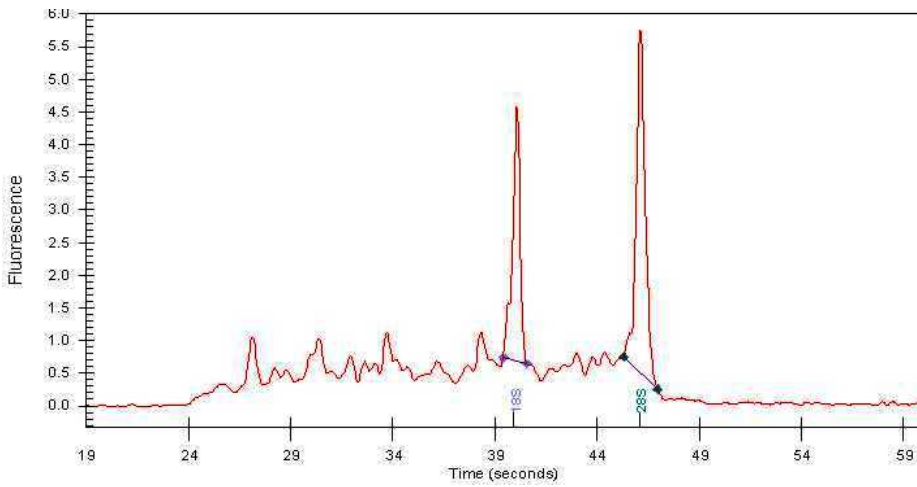
4x Image



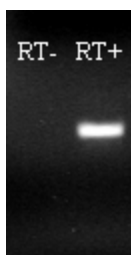
20x Image



RNA Gel Image



RNA Electropherogram Image



RNA RT-PCR Image