

Product datasheet for CR562943

Tissue Total RNA, Urinary bladder

Product data:

Product Type:	Total RNA
Disease State:	Cancer
Diagnosis Category:	Bladder Cancer
Tissue:	Urinary bladder
Frozen Sample ID:	FR00001917
Case ID:	CU0000000643
Prep:	2
Vial ID:	RN000001B8
Tissue of Origin:	Urinary bladder
Site of Finding:	Urinary bladder
Appearance:	Tumor
Sample Diagnosis (from Pathology Verification):	Carcinoma of bladder, transitional cell
Normal:	10%
Lesional:	0%
Tumor:	75%
Tumor Hypo/Acellular Stroma:	15%
Tumor Hypercellular Stroma:	0%
Necrosis:	0%
Pathology Verification notes from H&E review:	Carcinoma in situ also present
Bioanalyzer Ratio (28S/18S):	1.24



[View online »](#)

CASE Diagnosis (from medical center path report): Carcinoma of bladder, transitional cell

Age: 65

Gender: Male

Tumor Grade: AJCC G3: Poorly differentiated

Minimum Stage Grouping: IV

T (Extent of Primary Tumor): T3a

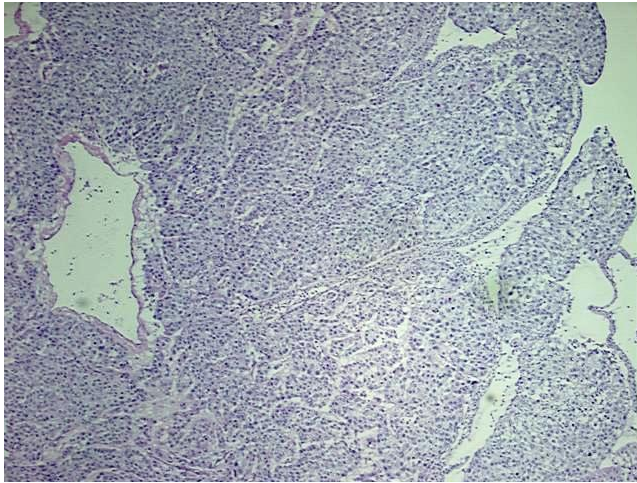
N (Lymph node metastasis): N2

M (Distant metastasis): MX

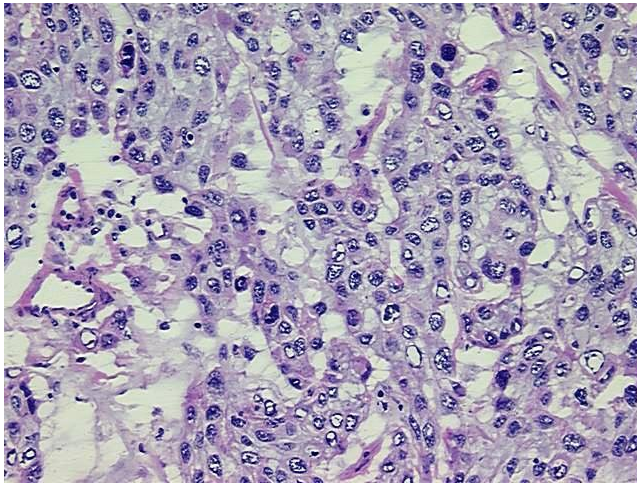
Storage: Store tissue total RNA at -80°C.

Stability: These products are stable for one year from date of shipping when stored at -80°C without repeated freeze/thaws.

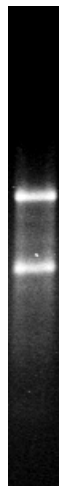
Product images:



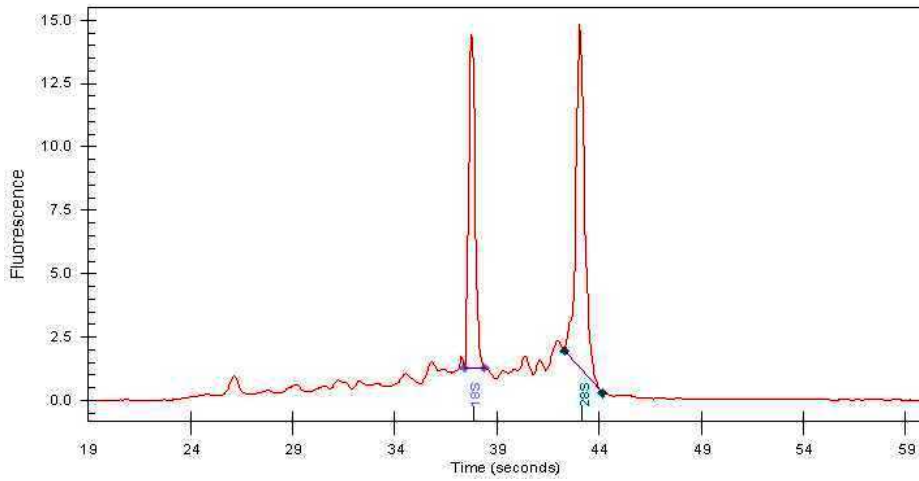
4x Image



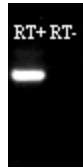
20x Image



RNA Gel Image



RNA Electropherogram Image



RNA RT-PCR Image