

Product datasheet for CR562939

Tissue Total RNA, Cervix

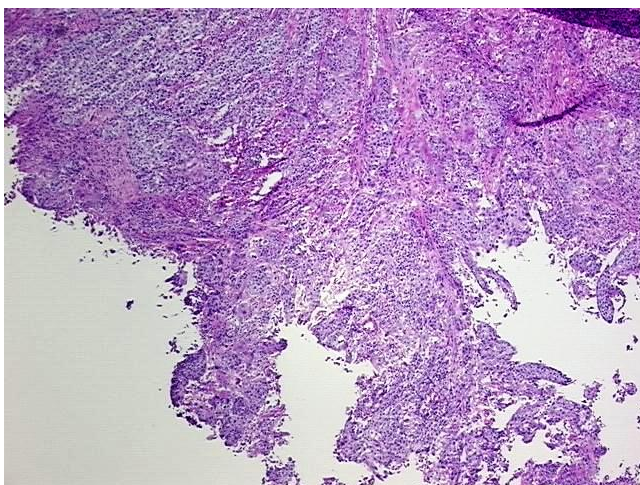
Product data:

Product Type:	Total RNA
Disease State:	Cancer
Diagnosis Category:	Cervical Cancer
Tissue:	Cervix
Frozen Sample ID:	FR000019DF
Case ID:	CU0000000656
Prep:	2
Vial ID:	RN00000A57
Tissue of Origin:	Cervix
Site of Finding:	Cervix
Appearance:	Tumor
Sample Diagnosis (from Pathology Verification):	Carcinoma of cervix, squamous cell, large cell, non-keratinizing
Normal:	0%
Lesional:	0%
Tumor:	90%
Tumor Hypo/Acellular Stroma:	10%
Tumor Hypercellular Stroma:	0%
Necrosis:	0%
Bioanalyzer Ratio (28S/18S):	1.55
CASE Diagnosis (from medical center path report):	Carcinoma of cervix, squamous cell, large cell, non-keratinizing
Age:	43

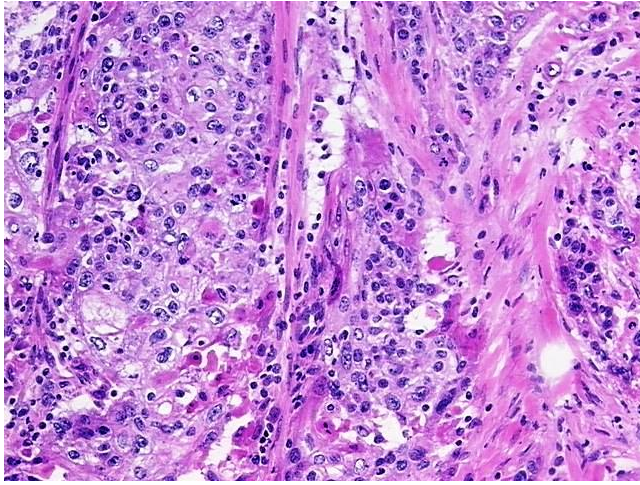


[View online »](#)

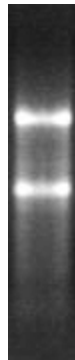
Gender:	Female
Tumor Grade:	FIGO G3: Poorly differentiated
Minimum Stage Grouping:	IIIB
T (Extent of Primary Tumor):	T1b2
N (Lymph node metastasis):	N1
M (Distant metastasis):	MX
Storage:	Store tissue total RNA at -80°C.
Stability:	These products are stable for one year from date of shipping when stored at -80°C without repeated freeze/thaws.

Product images:

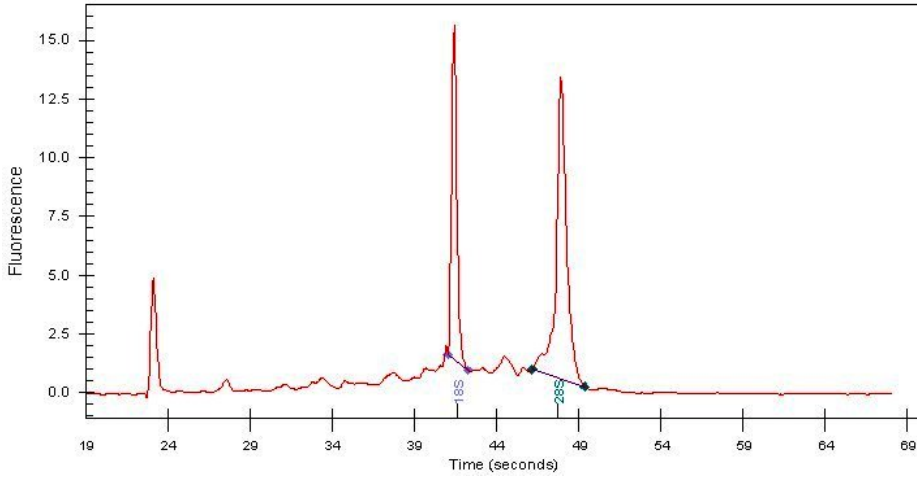
4x Image



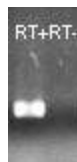
20x Image



RNA Gel Image



RNA Electropherogram Image



RNA RT-PCR Image