

Product datasheet for CR562916

Tissue Total RNA, Endometrium

Product data:

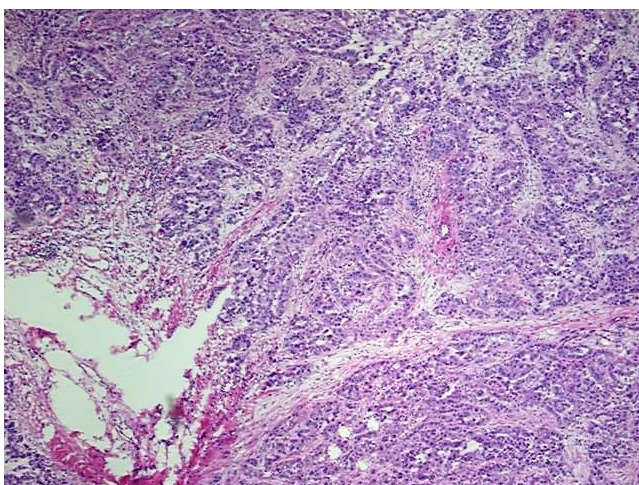
Product Type:	Total RNA
Disease State:	Cancer
Diagnosis Category:	Endometrial Cancer
Tissue:	Endometrium
Frozen Sample ID:	FR00001300
Case ID:	CU0000000533
Prep:	1
Vial ID:	RN00000203
Tissue of Origin:	Endometrium
Site of Finding:	Omentum
Appearance:	Tumor
Sample Diagnosis (from Pathology Verification):	Adenocarcinoma of endometrium, serous, metastatic
Normal:	5%
Lesional:	0%
Tumor:	80%
Tumor Hypo/Acellular Stroma:	13%
Tumor Hypercellular Stroma:	0%
Necrosis:	2%
Pathology Verification notes from H&E review:	Endometrial tumor metastasized to omentum
Bioanalyzer Ratio (28S/18S):	1.45



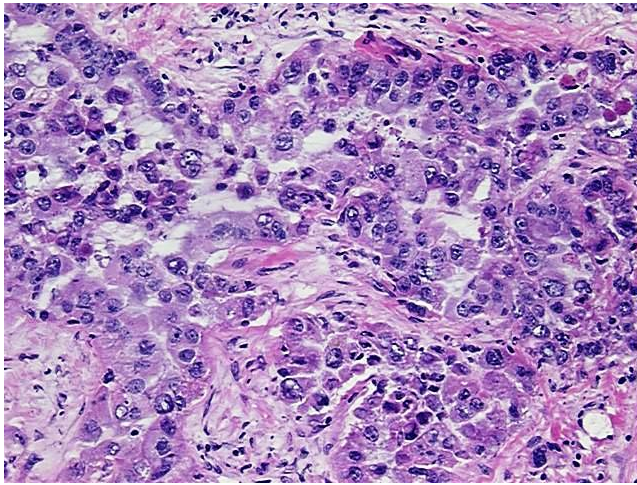
[View online »](#)

CASE Diagnosis (from medical center path report):	Adenocarcinoma of endometrium, serous
Age:	66
Gender:	Female
Tumor Grade:	FIGO G3: Poorly differentiated
Minimum Stage Grouping:	IIIA
T (Extent of Primary Tumor):	T3a
N (Lymph node metastasis):	NX
M (Distant metastasis):	MX
Storage:	Store tissue total RNA at -80°C.
Stability:	These products are stable for one year from date of shipping when stored at -80°C without repeated freeze/thaws.

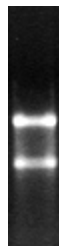
Product images:



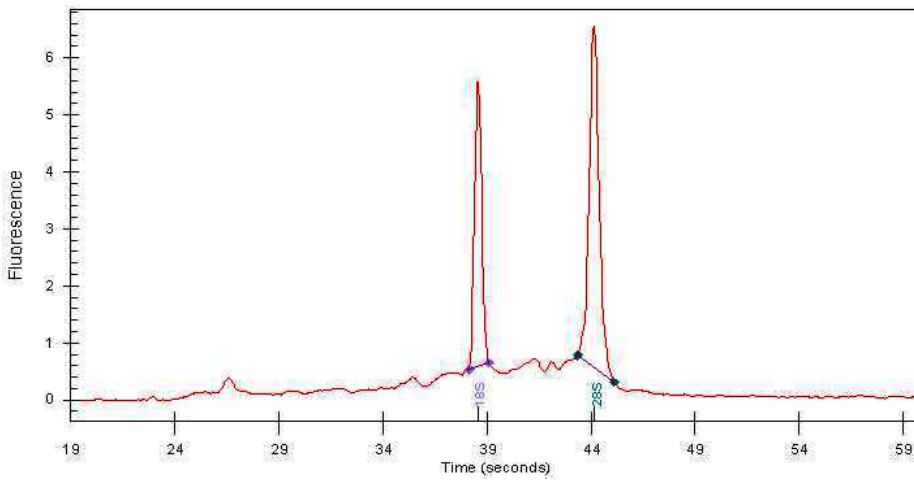
4x Image



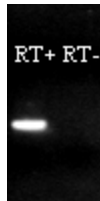
20x Image



RNA Gel Image



RNA Electropherogram Image



RNA RT-PCR Image