

Product datasheet for **CR562878**

Tissue Total RNA, Kidney

Product data:

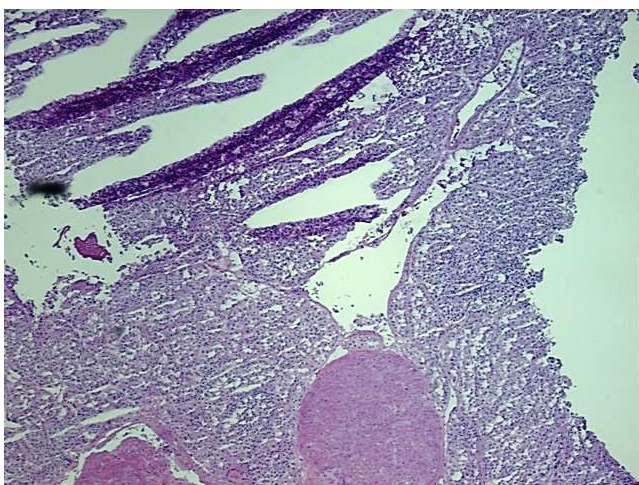
Product Type:	Total RNA
Disease State:	Cancer
Diagnosis Category:	Renal Cell Carcinoma
Tissue:	Kidney
Frozen Sample ID:	FR000026A3
Case ID:	CU0000000802
Prep:	3
Vial ID:	RN00000173
Tissue of Origin:	Kidney
Site of Finding:	Kidney
Appearance:	Tumor
Sample Diagnosis (from Pathology Verification):	Carcinoma of kidney, renal cell
Normal:	0%
Lesional:	0%
Tumor:	80%
Tumor Hypo/Acellular Stroma:	10%
Tumor Hypercellular Stroma:	10%
Necrosis:	0%
Pathology Verification notes from H&E review:	features suggestive of chromophobe subtype
Bioanalyzer Ratio (28S/18S):	1.63



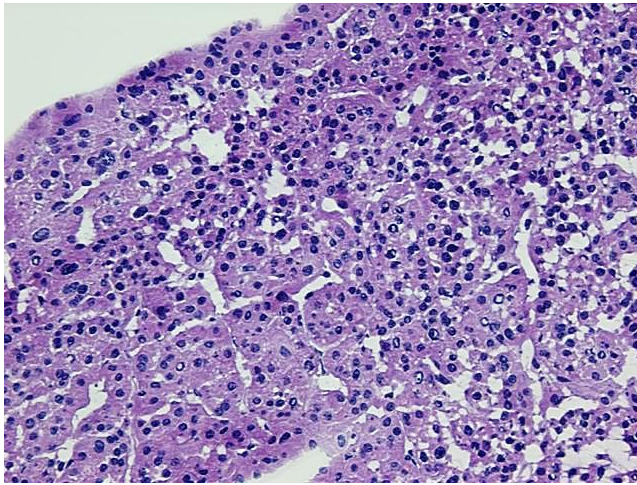
[View online »](#)

CASE Diagnosis (from medical center path report):	Carcinoma of kidney, renal cell
Age:	57
Gender:	Female
Tumor Grade:	Fuhrman G3: Nuclei very irregular
Minimum Stage Grouping:	II
T (Extent of Primary Tumor):	T2
N (Lymph node metastasis):	N0
M (Distant metastasis):	MX
Storage:	Store tissue total RNA at -80°C.
Stability:	These products are stable for one year from date of shipping when stored at -80°C without repeated freeze/thaws.

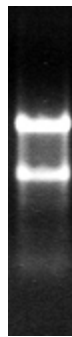
Product images:



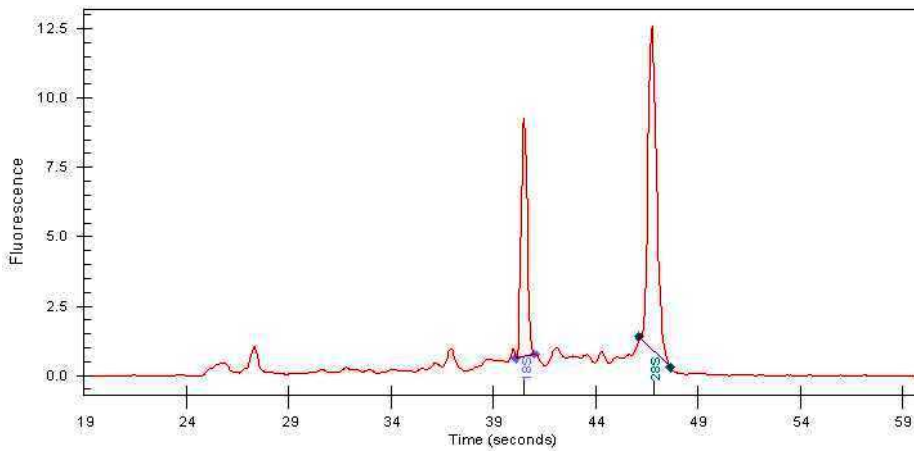
4x Image



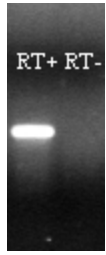
20x Image



RNA Gel Image



RNA Electropherogram Image



RNA RT-PCR Image