

Product datasheet for CR562865

Tissue Total RNA, Soft tissue

Product data:

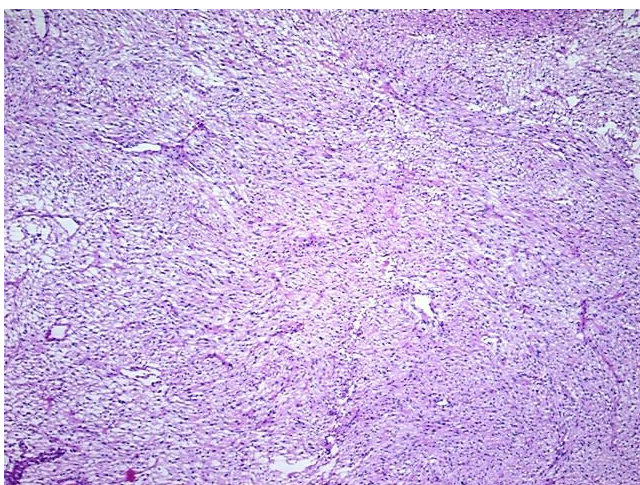
| | |
|---|-------------------------------|
| Product Type: | Total RNA |
| Disease State: | Cancer |
| Diagnosis Category: | Sarcoma |
| Tissue: | Soft tissue |
| Frozen Sample ID: | FR00001D43 |
| Case ID: | CU0000000701 |
| Prep: | 3 |
| Vial ID: | RN000007D3 |
| Tissue of Origin: | Soft tissue |
| Site of Finding: | Retroperitoneal region |
| Appearance: | Tumor |
| Sample Diagnosis (from Pathology Verification): | Liposarcoma |
| Normal: | 0% |
| Lesional: | 0% |
| Tumor: | 90% |
| Tumor Hypo/Acellular Stroma: | 0% |
| Tumor Hypercellular Stroma: | 10% |
| Necrosis: | 0% |
| Pathology Verification notes from H&E review: | Dedifferentiated liposarcoma. |
| Bioanalyzer Ratio (28S/18S): | 1.28 |



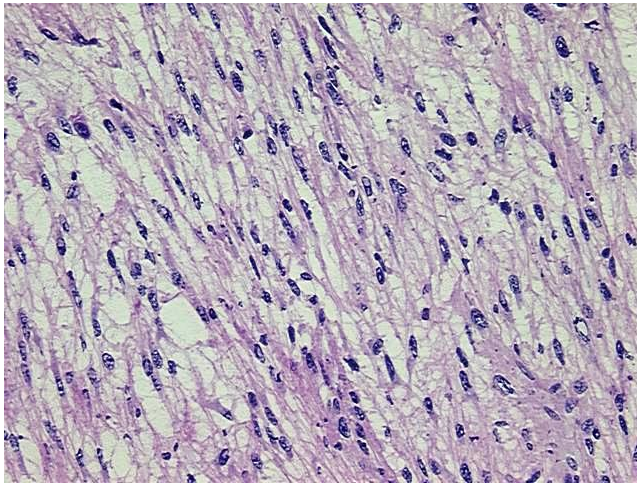
[View online »](#)

| | |
|---|--|
| CASE Diagnosis (from medical center path report): | Liposarcoma |
| Age: | 71 |
| Gender: | Male |
| Tumor Grade: | AJCC G3: Poorly differentiated |
| Minimum Stage Grouping: | III |
| T (Extent of Primary Tumor): | T2b |
| N (Lymph node metastasis): | NX |
| M (Distant metastasis): | MX |
| Storage: | Store tissue total RNA at -80°C. |
| Stability: | These products are stable for one year from date of shipping when stored at -80°C without repeated freeze/thaws. |

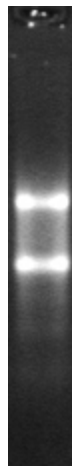
Product images:



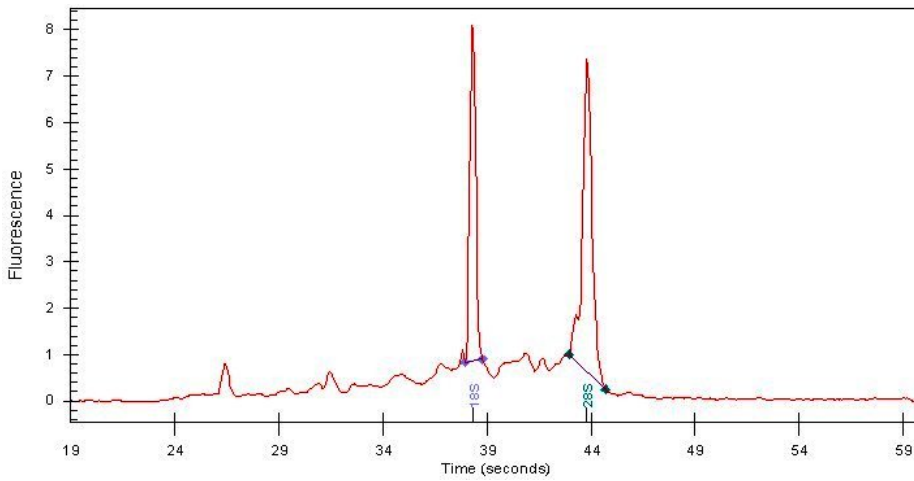
4x Image



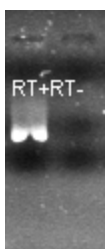
20x Image



RNA Gel Image



RNA Electropherogram Image



RNA RT-PCR Image