

## Product datasheet for **CR562855**

### Tissue Total RNA, Breast

#### Product data:

Product Type:	Total RNA
Disease State:	Cancer
Diagnosis Category:	Breast Cancer
Tissue:	Breast
Frozen Sample ID:	FR00002023
Case ID:	CU0000000732
Prep:	1
Vial ID:	RN0000022C
Tissue of Origin:	Breast
Site of Finding:	Lymph node
Appearance:	Tumor
Sample Diagnosis (from Pathology Verification):	Adenocarcinoma of breast, ductal, metastatic
Normal:	1%
Lesional:	0%
Tumor:	95%
Tumor Hypo/Acellular Stroma:	1%
Tumor Hypercellular Stroma:	1%
Necrosis:	2%
Pathology Verification notes from H&E review:	Breast tumor metastasized to lymph node
Bioanalyzer Ratio (28S/18S):	1.52



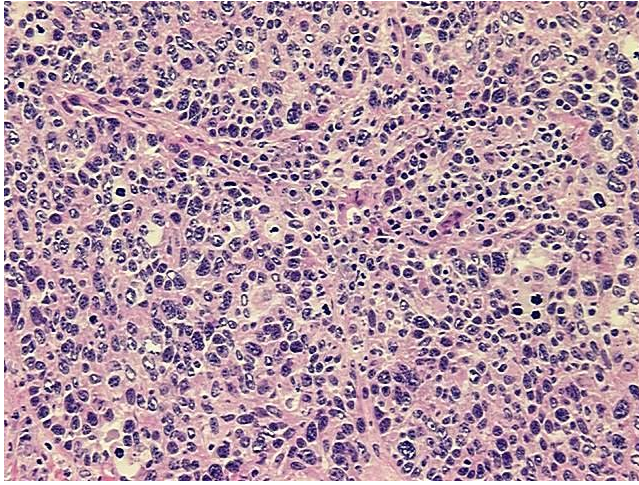
[View online »](#)

CASE Diagnosis (from medical center path report):	Adenocarcinoma of breast, ductal
Age:	61
Gender:	Female
Tumor Grade:	NSABP Grade: Nuclear 3 of 3 & Histologic 3 of 3
Minimum Stage Grouping:	IIIA
T (Extent of Primary Tumor):	T1
N (Lymph node metastasis):	N2a
M (Distant metastasis):	MX
Storage:	Store tissue total RNA at -80°C.
Stability:	These products are stable for one year from date of shipping when stored at -80°C without repeated freeze/thaws.

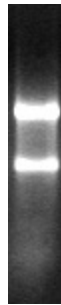
### Product images:



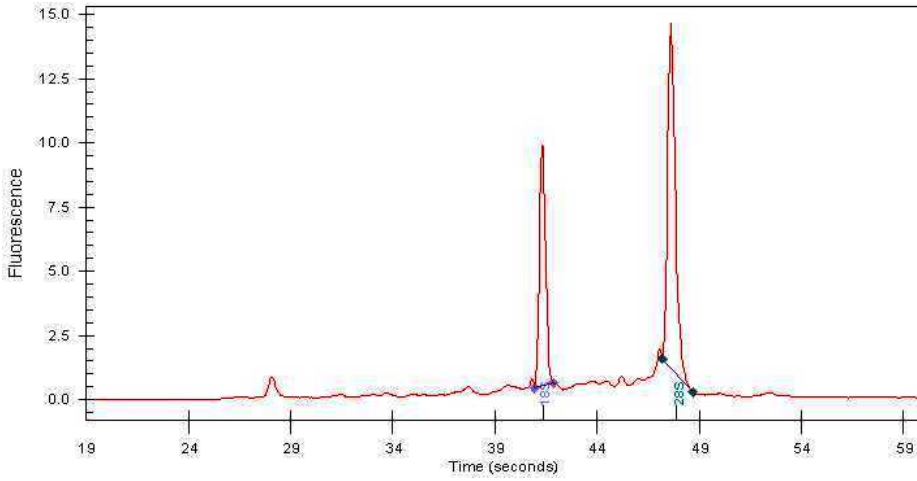
4x Image



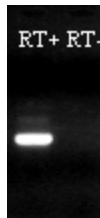
20x Image



RNA Gel Image



RNA Electropherogram Image



RNA RT-PCR Image