

## Product datasheet for CR562849

### Tissue Total RNA, Breast

#### Product data:

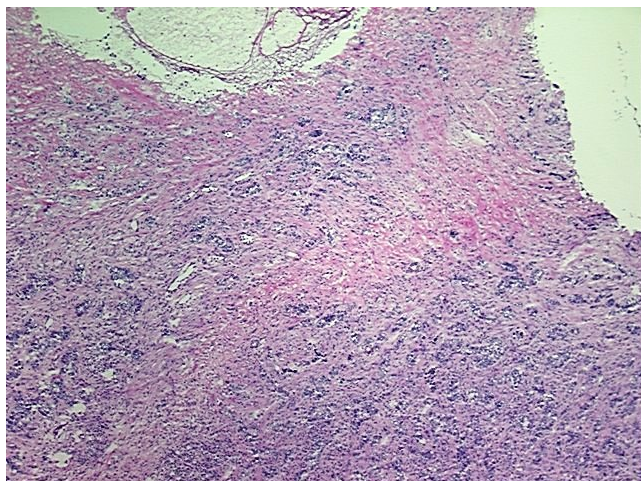
Product Type:	Total RNA
Disease State:	Cancer
Diagnosis Category:	Breast Cancer
Tissue:	Breast
Frozen Sample ID:	FR00001E30
Case ID:	CU0000000706
Prep:	2
Vial ID:	RN000015F9
Tissue of Origin:	Breast
Site of Finding:	Breast
Appearance:	Tumor
Sample Diagnosis (from Pathology Verification):	Adenocarcinoma of breast, ductal
Normal:	0%
Lesional:	0%
Tumor:	96%
Tumor Hypo/Acellular Stroma:	0%
Tumor Hypercellular Stroma:	4%
Necrosis:	0%
Bioanalyzer Ratio (28S/18S):	1.34
CASE Diagnosis (from medical center path report):	Adenocarcinoma of breast, ductal
Age:	61



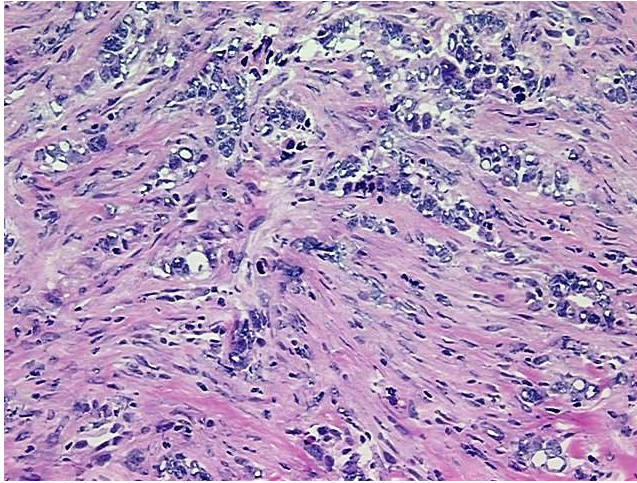
[View online »](#)

Gender:	Female
Tumor Grade:	NSABP Grade: Nuclear 3 of 3 & Histologic 3 of 3
Minimum Stage Grouping:	I
T (Extent of Primary Tumor):	T1c
N (Lymph node metastasis):	N0 (i+)
M (Distant metastasis):	MX
Diagnostic Test Results:	Proliferation index ~ PI,High; Cytokeratin (Pan) ~ Keratin, Pan ! by IHC,Positive; Progesterone receptor ~ PR ! by IHC,Positive; Estrogen receptor ~ ER ! by IHC,Positive; ERBB2,Amplified copy number; HER2 ~ ERBB2 ~ Neu ! by IHC,Positive, weak
Storage:	Store tissue total RNA at -80°C.
Stability:	These products are stable for one year from date of shipping when stored at -80°C without repeated freeze/thaws.

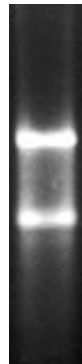
### Product images:



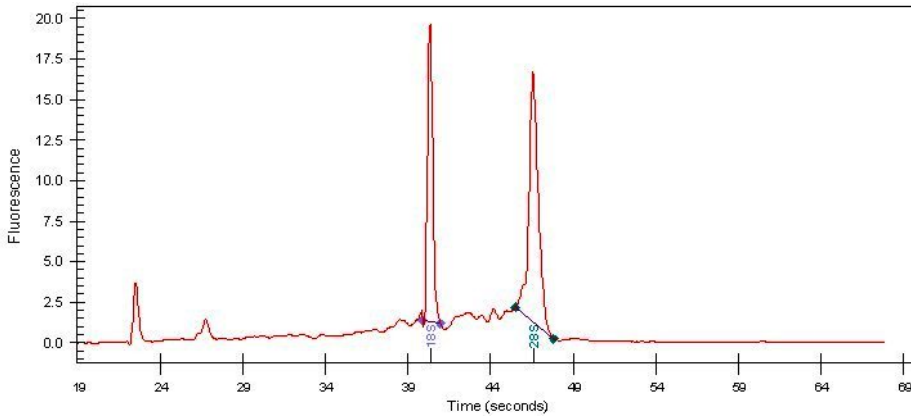
4x Image



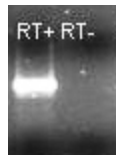
20x Image



RNA Gel Image



RNA Electropherogram Image



RNA RT-PCR Image