

Product datasheet for CR562845

Tissue Total RNA, Lung

Product data:

Product Type:	Total RNA
Disease State:	Cancer
Diagnosis Category:	Lung Cancer
Tissue:	Lung
Frozen Sample ID:	FR0000734F
Case ID:	CU0000001804
Prep:	1
Vial ID:	RN00001174
Tissue of Origin:	Lung
Site of Finding:	Lung
Appearance:	Tumor
Sample Diagnosis (from Pathology Verification):	Carcinoma of lung, large cell
Normal:	5%
Lesional:	0%
Tumor:	70%
Tumor Hypo/Acellular Stroma:	10%
Tumor Hypercellular Stroma:	0%
Necrosis:	15%
Pathology Verification notes from H&E review:	The tumor has focal basaloid features
Bioanalyzer Ratio (28S/18S):	1.27



[View online »](#)

CASE Diagnosis (from medical center path report): Carcinoma of lung, large cell

Age: 81

Gender: Female

Tumor Grade: AJCC G3: Poorly differentiated

Minimum Stage Grouping: IA

T (Extent of Primary Tumor): T1

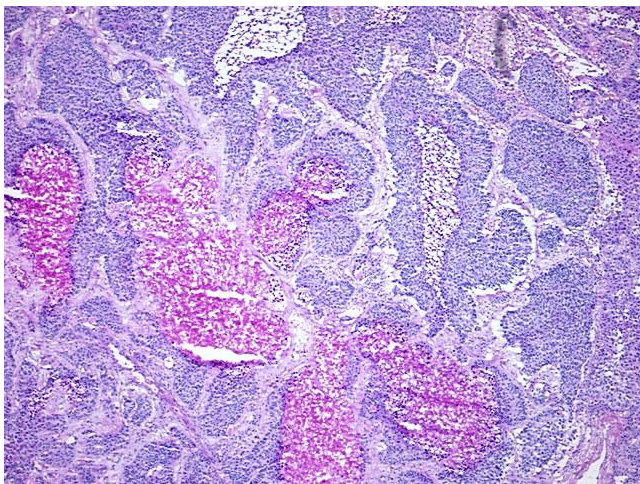
N (Lymph node metastasis): N0

M (Distant metastasis): MX

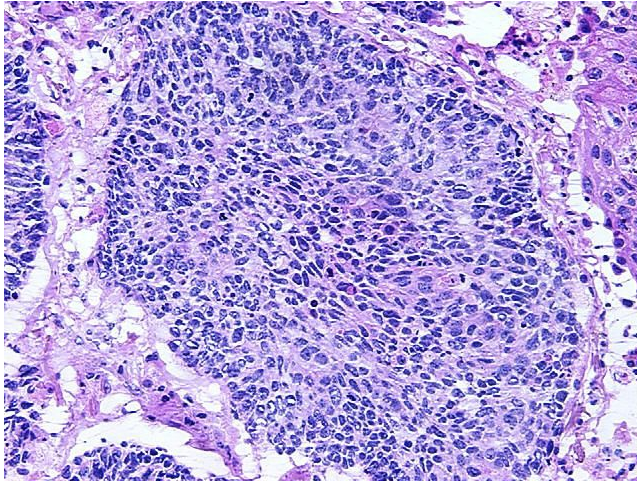
Storage: Store tissue total RNA at -80°C.

Stability: These products are stable for one year from date of shipping when stored at -80°C without repeated freeze/thaws.

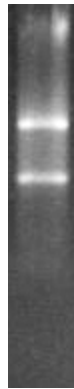
Product images:



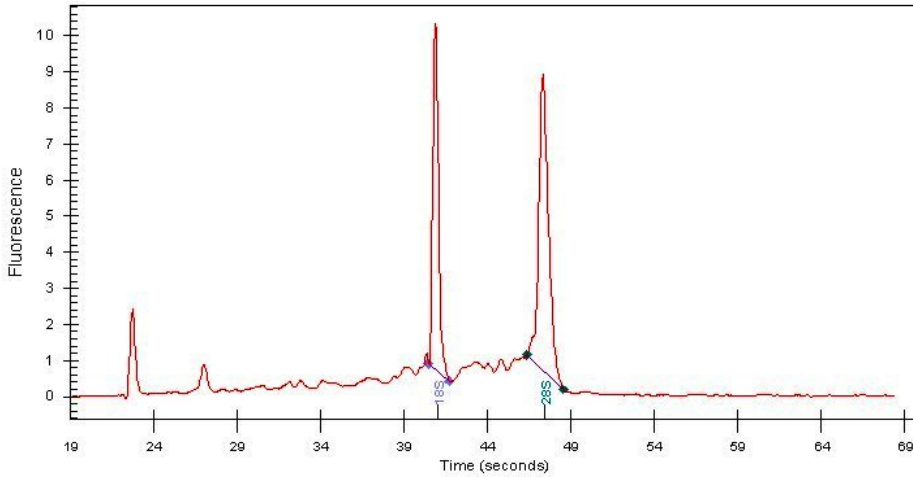
4x Image



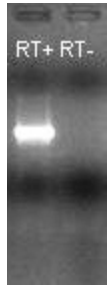
20x Image



RNA Gel Image



RNA Electropherogram Image



RNA RT-PCR Image