

## Product datasheet for CR562766

### Tissue Total RNA, Kidney

#### Product data:

Product Type:	Total RNA
Disease State:	Cancer
Diagnosis Category:	Renal Cell Carcinoma
Tissue:	Kidney
Frozen Sample ID:	FR00006292
Case ID:	CU0000001623
Prep:	4
Vial ID:	RN00003714
Tissue of Origin:	Kidney
Site of Finding:	Kidney
Appearance:	Tumor
Sample Diagnosis (from Pathology Verification):	Carcinoma of kidney, renal cell
Normal:	0%
Lesional:	0%
Tumor:	60%
Tumor Hypo/Acellular Stroma:	10%
Tumor Hypercellular Stroma:	0%
Necrosis:	30%
Pathology Verification notes from H&E review:	Tumor: predominantly papillary and clear cell type
Bioanalyzer Ratio (28S/18S):	1.3



[View online »](#)

**CASE Diagnosis (from medical center path report):** Carcinoma of kidney, renal cell, papillary

**Age:** 76

**Gender:** Male

**Tumor Grade:** Fuhrman G3: Nuclei very irregular

**Minimum Stage Grouping:** IV

**T (Extent of Primary Tumor):** T3a

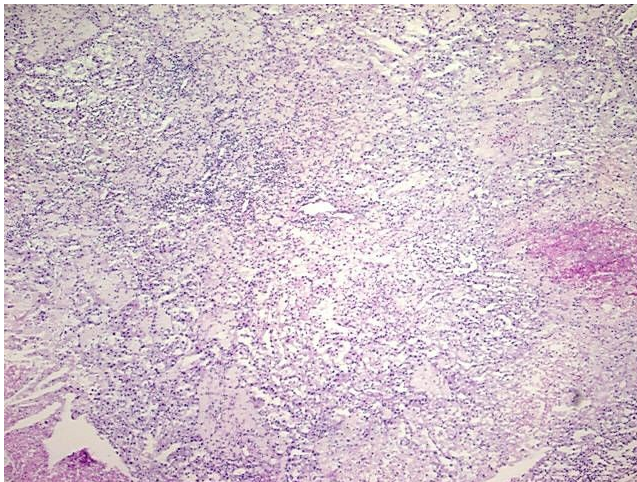
**N (Lymph node metastasis):** N0

**M (Distant metastasis):** M1

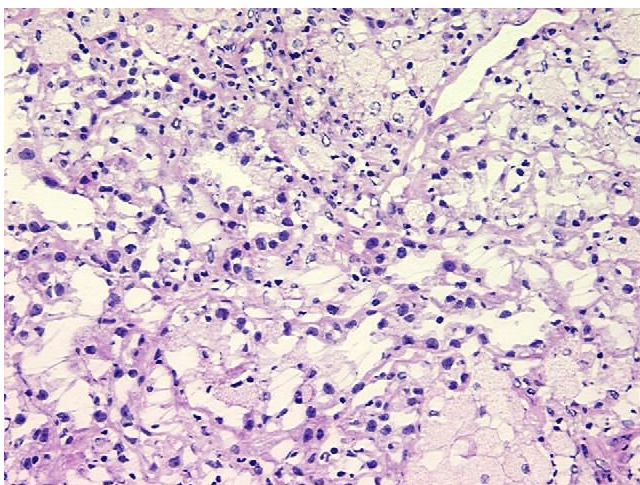
**Storage:** Store tissue total RNA at -80°C.

**Stability:** These products are stable for one year from date of shipping when stored at -80°C without repeated freeze/thaws.

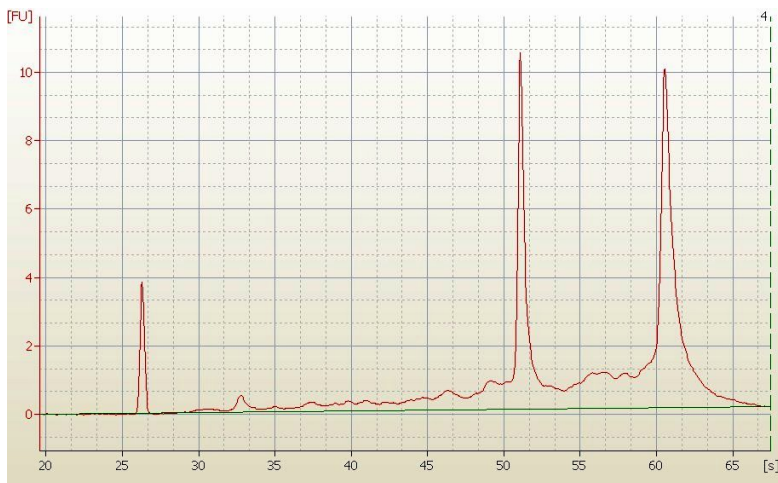
### Product images:



4x Image



20x Image



RNA Electropherogram Image



RNA RT-PCR Image