

## Product datasheet for CR562761

### Tissue Total RNA, Kidney

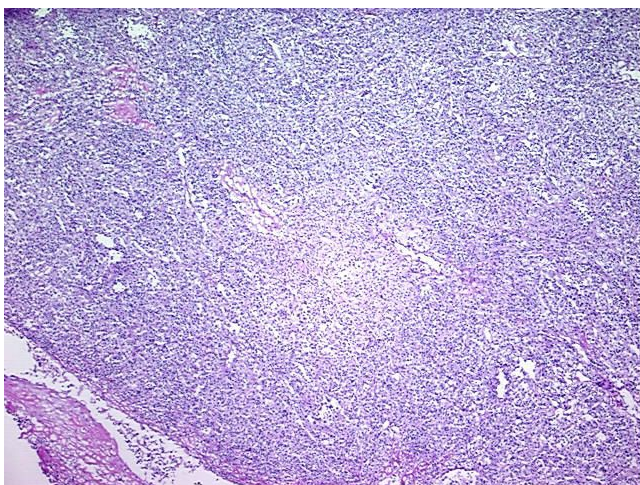
#### Product data:

Product Type:	Total RNA
Disease State:	Cancer
Diagnosis Category:	Renal Cell Carcinoma
Tissue:	Kidney
Frozen Sample ID:	FR0000801B
Case ID:	CU0000001979
Prep:	3
Vial ID:	RN00001748
Tissue of Origin:	Kidney
Site of Finding:	Kidney
Appearance:	Tumor
Sample Diagnosis (from Pathology Verification):	Carcinoma of kidney, renal cell, clear and granular cell
Normal:	0%
Lesional:	0%
Tumor:	70%
Tumor Hypo/Acellular Stroma:	10%
Tumor Hypercellular Stroma:	20%
Necrosis:	0%
Bioanalyzer Ratio (28S/18S):	0.9
CASE Diagnosis (from medical center path report):	Carcinoma of kidney, renal cell, clear and granular cell
Age:	46

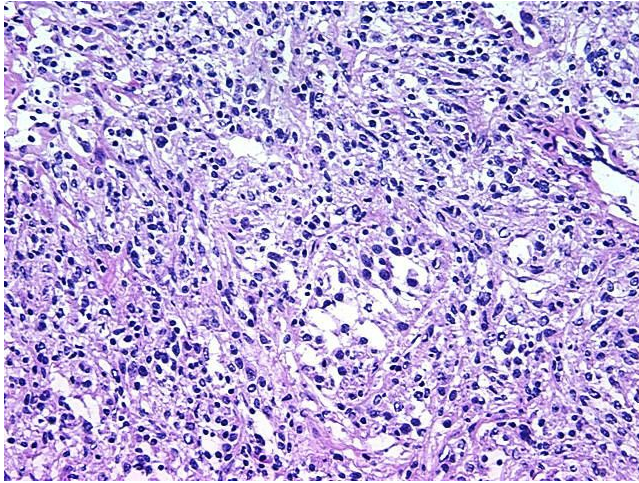


[View online »](#)

Gender:	Female
Tumor Grade:	Fuhrman G4: Nuclei bizarre and multilobated
Minimum Stage Grouping:	I
T (Extent of Primary Tumor):	T1
N (Lymph node metastasis):	NX
M (Distant metastasis):	MX
Storage:	Store tissue total RNA at -80°C.
Stability:	These products are stable for one year from date of shipping when stored at -80°C without repeated freeze/thaws.

**Product images:**

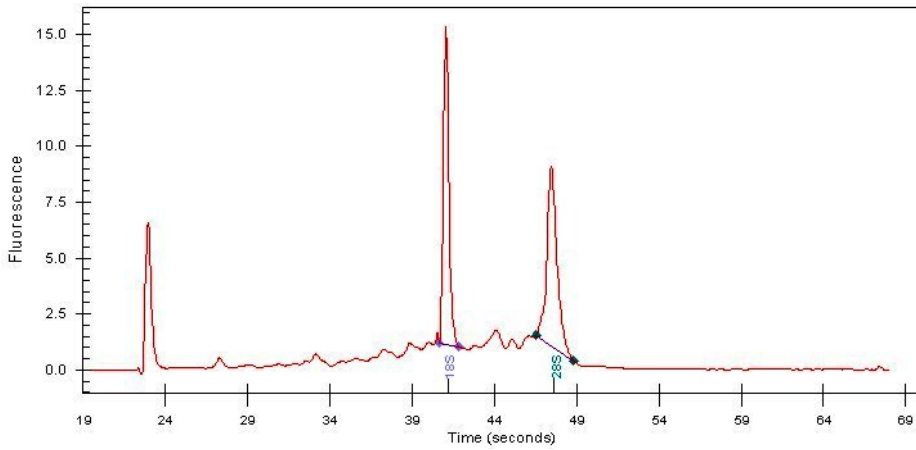
4x Image



20x Image



RNA Gel Image



RNA Electropherogram Image



RNA RT-PCR Image