

## Product datasheet for CR562746

### Tissue Total RNA, Skin

#### Product data:

Product Type:	Total RNA
Disease State:	Cancer
Diagnosis Category:	Melanoma
Tissue:	Skin
Frozen Sample ID:	FR00016E6A
Case ID:	CU00000005040
Prep:	1
Vial ID:	RN000000CE5
Tissue of Origin:	Skin
Site of Finding:	Lymph node
Appearance:	Tumor
Sample Diagnosis (from Pathology Verification):	Malignant melanoma, metastatic
Normal:	0%
Lesional:	0%
Tumor:	90%
Tumor Hypo/Acellular Stroma:	9%
Tumor Hypercellular Stroma:	0%
Necrosis:	1%
Pathology Verification notes from H&E review:	malignant melanoma metastasized to lymph node
Bioanalyzer Ratio (28S/18S):	1.89


[View online »](#)

**CASE Diagnosis (from medical center path report):** Malignant melanoma, metastatic

**Age:** 51

**Gender:** Male

**Tumor Grade:** Not Reported

**Minimum Stage** III

**Grouping:**

**T (Extent of Primary Tumor):** TX

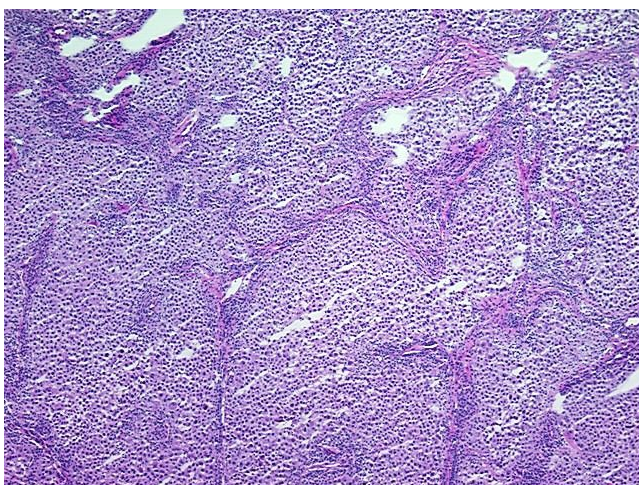
**N (Lymph node metastasis):** N1

**M (Distant metastasis):** MX

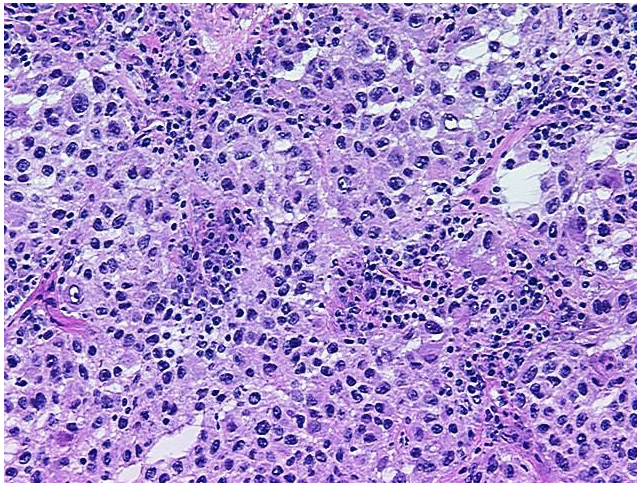
**Storage:** Store tissue total RNA at -80°C.

**Stability:** These products are stable for one year from date of shipping when stored at -80°C without repeated freeze/thaws.

## Product images:



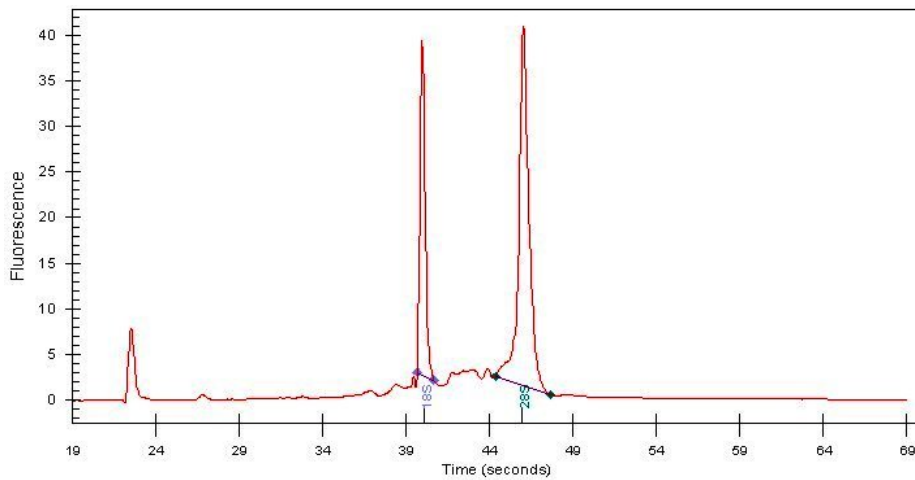
4x Image



20x Image



RNA Gel Image



RNA Electropherogram Image



RNA RT-PCR Image