

## Product datasheet for CR562725

### Tissue Total RNA, Lymphoid tissue

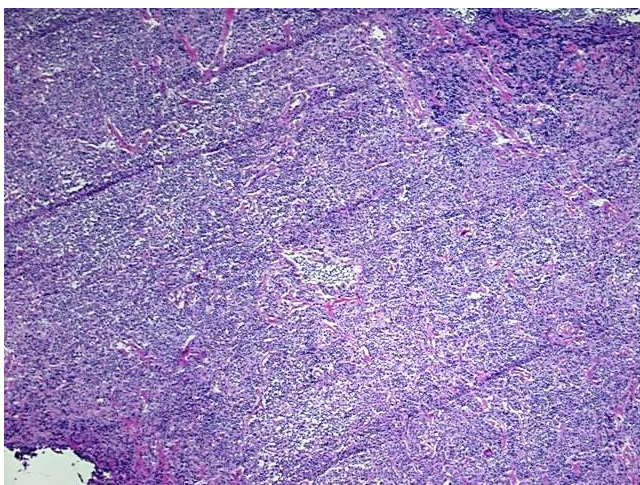
#### Product data:

Product Type:	Total RNA
Disease State:	Cancer
Diagnosis Category:	Lymphoma
Tissue:	Lymphoid tissue
Frozen Sample ID:	FR0000464E
Case ID:	CU0000001393
Prep:	1
Vial ID:	RN0000027E
Tissue of Origin:	Lymphoid tissue
Site of Finding:	Lymph node
Appearance:	Tumor
Sample Diagnosis (from Pathology Verification):	Lymphoma, Hodgkin, nodular sclerosing
Normal:	0%
Lesional:	0%
Tumor:	95%
Tumor Hypo/Acellular Stroma:	0%
Tumor Hypercellular Stroma:	5%
Necrosis:	0%
Bioanalyzer Ratio (28S/18S):	1.27
CASE Diagnosis (from medical center path report):	Lymphoma, Hodgkin, nodular sclerosing
Age:	36

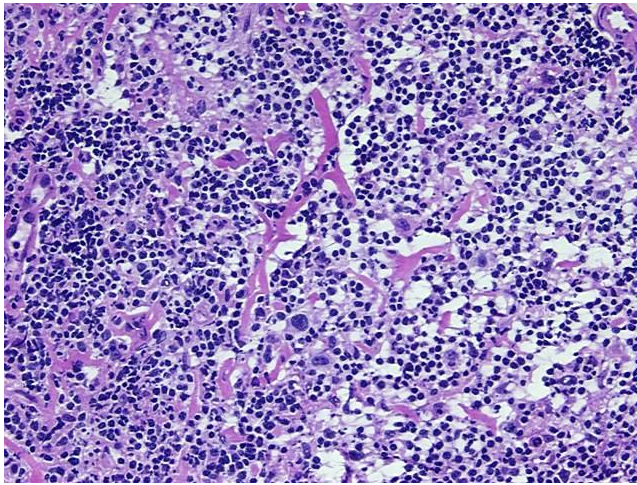


[View online »](#)

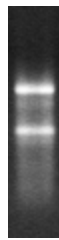
Gender:	Female
Tumor Grade:	Not Reported
Minimum Stage Grouping:	I
T (Extent of Primary Tumor):	Not applicable
N (Lymph node metastasis):	Not applicable
M (Distant metastasis):	Not applicable
Diagnostic Test Results:	CD45 ~ Leukocyte common antigen ! by IHC,Negative; CD15 ~ Lewis X ~ Leu M1 ! by IHC,Positive; CD30 ~ Ki1 ! by IHC,Positive; CD20 ~ B1 ~ Leu16 ! by IHC,Positive
Storage:	Store tissue total RNA at -80°C.
Stability:	These products are stable for one year from date of shipping when stored at -80°C without repeated freeze/thaws.

**Product images:**

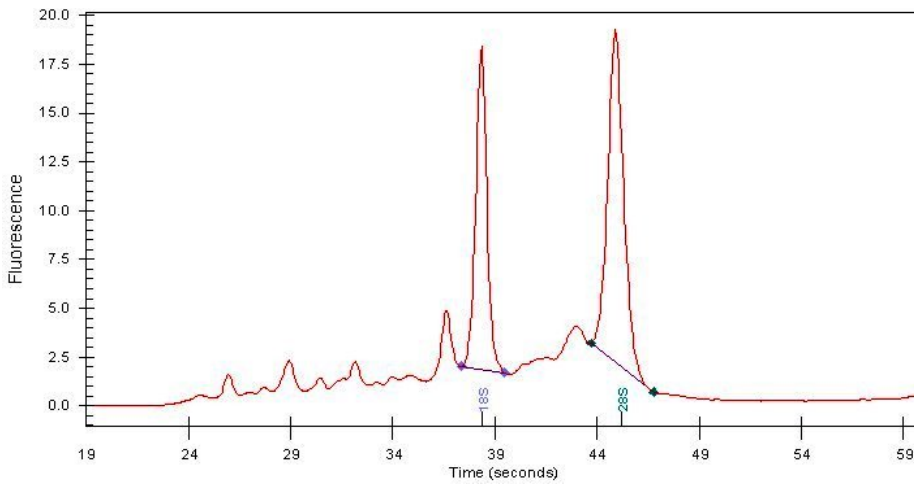
4x Image



20x Image



RNA Gel Image



RNA Electropherogram Image



RNA RT-PCR Image