

Product datasheet for CR562708

Tissue Total RNA, Lung

Product data:

Product Type:	Total RNA
Disease State:	Cancer
Diagnosis Category:	Lung Cancer
Tissue:	Lung
Frozen Sample ID:	FR00003EA9
Case ID:	CU0000001180
Prep:	6
Vial ID:	RN00001220
Tissue of Origin:	Lung
Site of Finding:	Lung
Appearance:	Tumor
Sample Diagnosis (from Pathology Verification):	Carcinoma of lung, small cell
Normal:	0%
Lesional:	0%
Tumor:	35%
Tumor Hypo/Acellular Stroma:	63%
Tumor Hypercellular Stroma:	0%
Necrosis:	2%
Pathology Verification notes from H&E review:	Tumor: morphologically consistent with large cell neuroendocrine carcinoma of the lung (intermediate subtype of small cell carcinoma of lung); Other Features/Comments: Sample contains chronic inflammatory cells in stromal component
Bioanalyzer Ratio (28S/18S):	1.12



[View online »](#)

CASE Diagnosis (from medical center path report): Carcinoma of lung, small cell

Age: 71

Gender: Male

Tumor Grade: Not Reported

Minimum Stage Grouping: IB

T (Extent of Primary Tumor): T2

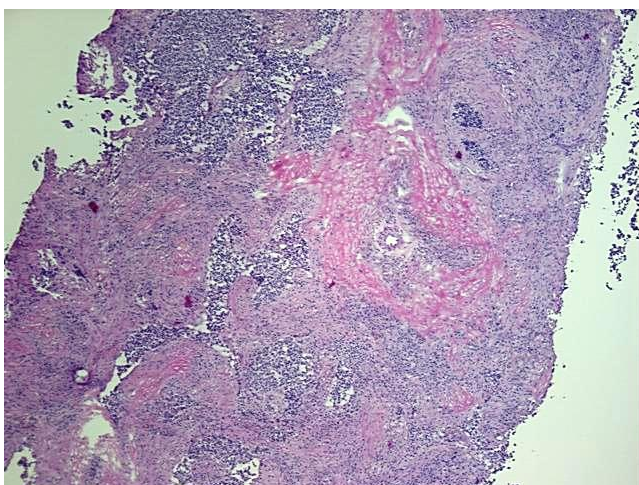
N (Lymph node metastasis): N0

M (Distant metastasis): MX

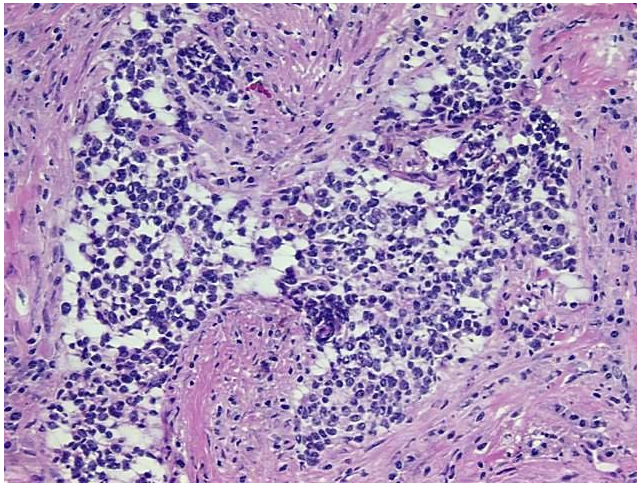
Storage: Store tissue total RNA at -80°C.

Stability: These products are stable for one year from date of shipping when stored at -80°C without repeated freeze/thaws.

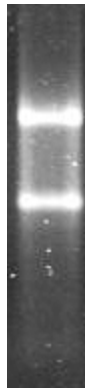
Product images:



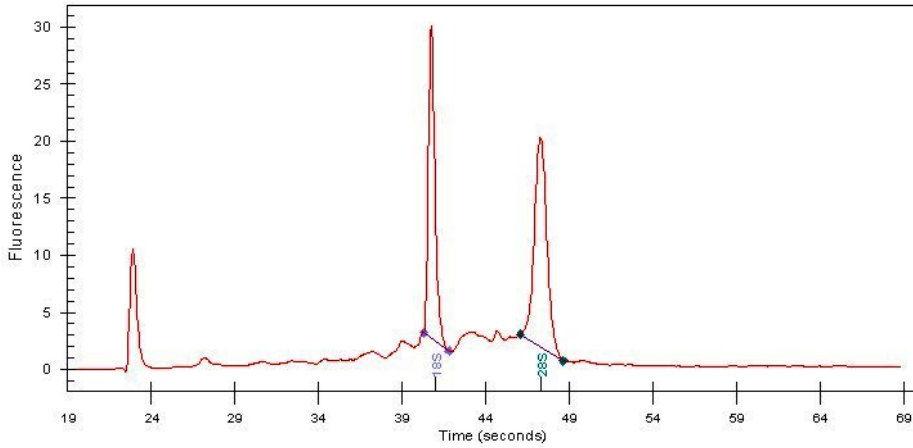
4x Image



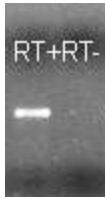
20x Image



RNA Gel Image



RNA Electropherogram Image



RNA RT-PCR Image