

Product datasheet for CR562688

Tissue Total RNA, Ovary: left

Product data:

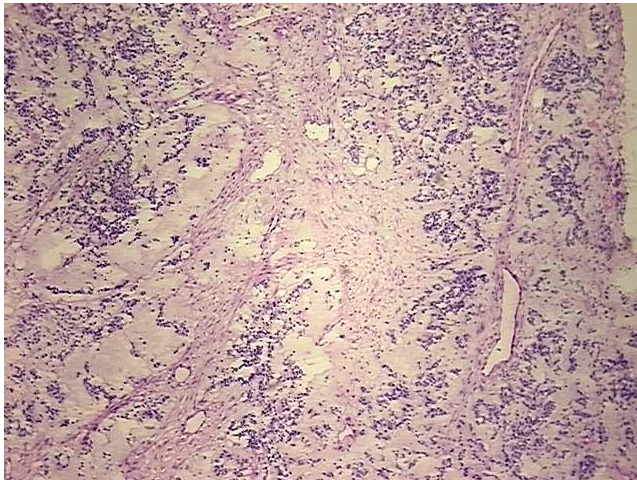
Product Type:	Total RNA
Disease State:	Cancer
Diagnosis Category:	Carcinosarcoma
Tissue:	Ovary
Frozen Sample ID:	FR00005483
Case ID:	CU0000001496
Prep:	2
Vial ID:	RN0000325B
Tissue of Origin:	Ovary: left
Site of Finding:	Omentum
Appearance:	Tumor
Sample Diagnosis (from Pathology Verification):	Carcinosarcoma of ovary, metastatic
Normal:	20%
Lesional:	0%
Tumor:	50%
Tumor Hypo/Acellular Stroma:	10%
Tumor Hypercellular Stroma:	20%
Necrosis:	0%
Bioanalyzer Ratio (28S/18S):	0.73
CASE Diagnosis (from medical center path report):	Carcinosarcoma of ovary
Age:	46



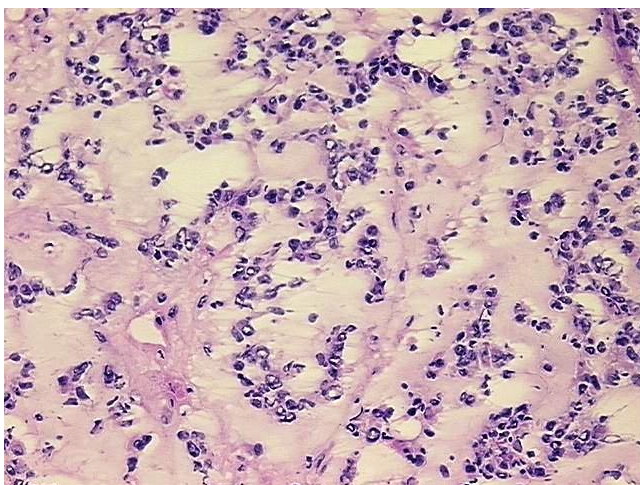
[View online »](#)

Gender:	Female
Tumor Grade:	AJCC G3-4: Poorly differentiated or undifferentiated
Minimum Stage Grouping:	III
T (Extent of Primary Tumor):	T3
N (Lymph node metastasis):	NX
M (Distant metastasis):	MX
Diagnostic Test Results:	CD227 ~ MUC1 ~ EMA ~ CA15-3 ! by IHC,Positive; CD56 ~ NCAM ~ NKH1 ! by IHC,Positive, focal; Vimentin ~ VIM ! by IHC,Positive; S100 protein,Positive; Epithelial specific antigen ~ BerEP4 ~ MOC31 ! by IHC,Positive; Cytokeratin 7 ~ CK7 ! by
Storage:	Store tissue total RNA at -80°C.
Stability:	These products are stable for one year from date of shipping when stored at -80°C without repeated freeze/thaws.

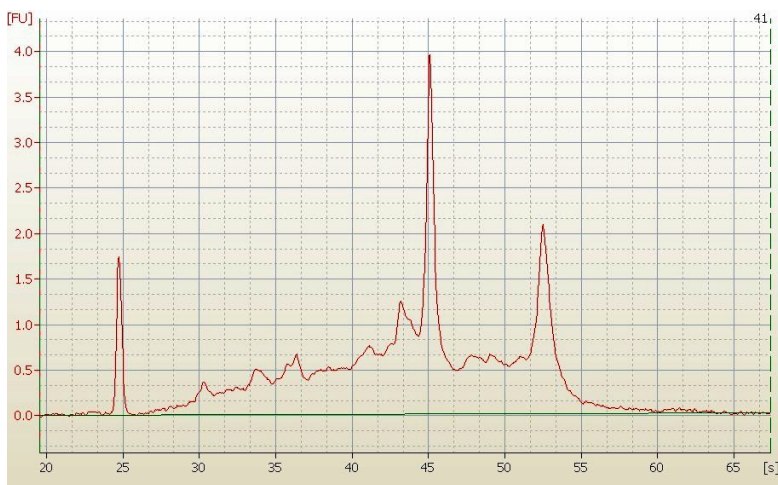
Product images:



4x Image



20x Image



RNA Electropherogram Image



RNA RT-PCR Image