

## Product datasheet for CR562660

### Tissue Total RNA, Soft tissue

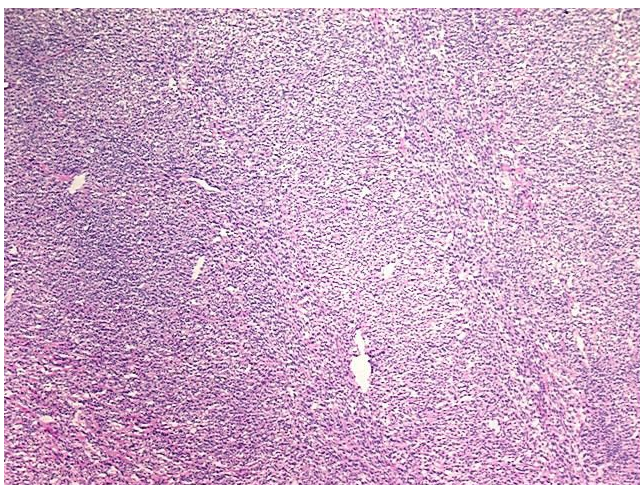
#### Product data:

Product Type:	Total RNA
Disease State:	Cancer
Diagnosis Category:	Sarcoma
Tissue:	Soft tissue
Frozen Sample ID:	FR00005DC7
Case ID:	CU0000001577
Prep:	1
Vial ID:	RN0000325C
Tissue of Origin:	Soft tissue
Site of Finding:	Lung
Appearance:	Tumor
Sample Diagnosis (from Pathology Verification):	Sarcoma, synovial, monophasic, metastatic
Normal:	0%
Lesional:	0%
Tumor:	95%
Tumor Hypo/Acellular Stroma:	0%
Tumor Hypercellular Stroma:	5%
Necrosis:	0%
Bioanalyzer Ratio (28S/18S):	1.07
CASE Diagnosis (from medical center path report):	Sarcoma, synovial, monophasic, metastatic
Age:	46

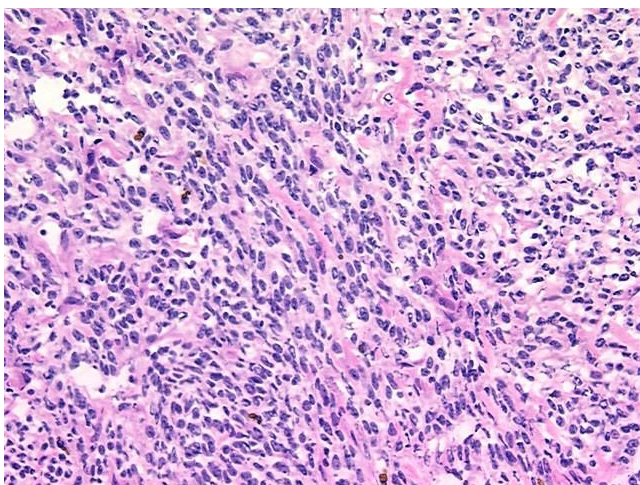


[View online »](#)

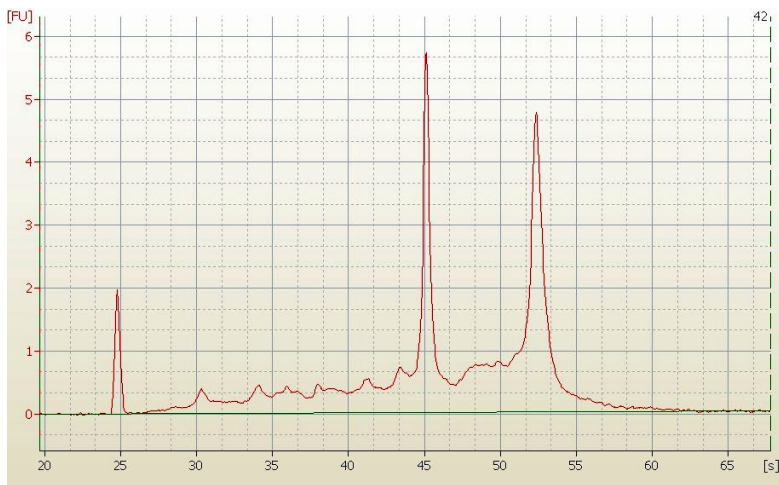
Gender:	Female
Tumor Grade:	Not Reported
Minimum Stage Grouping:	IV
T (Extent of Primary Tumor):	TX
N (Lymph node metastasis):	NX
M (Distant metastasis):	M1
Storage:	Store tissue total RNA at -80°C.
Stability:	These products are stable for one year from date of shipping when stored at -80°C without repeated freeze/thaws.

**Product images:**

4x Image



20x Image



RNA Electropherogram Image



RNA RT-PCR Image