

## Product datasheet for CR562658

### Tissue Total RNA, Lymphoid tissue

#### Product data:

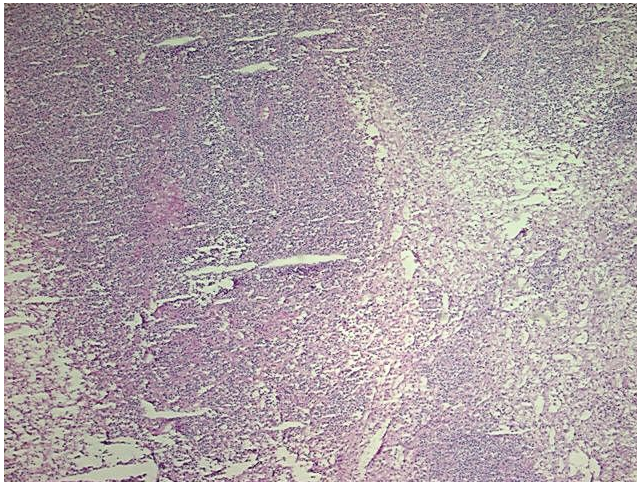
Product Type:	Total RNA
Disease State:	Cancer
Diagnosis Category:	Lymphoma
Tissue:	Lymphoid tissue
Frozen Sample ID:	FR000062DC
Case ID:	CU0000001625
Prep:	1
Vial ID:	RN00000DAF
Tissue of Origin:	Lymphoid tissue
Site of Finding:	Spleen
Appearance:	Tumor
Sample Diagnosis (from Pathology Verification):	Lymphoma, large B-cell, diffuse
Normal:	20%
Lesional:	0%
Tumor:	70%
Tumor Hypo/Acellular Stroma:	10%
Tumor Hypercellular Stroma:	0%
Necrosis:	0%
Bioanalyzer Ratio (28S/18S):	1.91
CASE Diagnosis (from medical center path report):	Lymphoma, large B-cell, diffuse
Age:	61



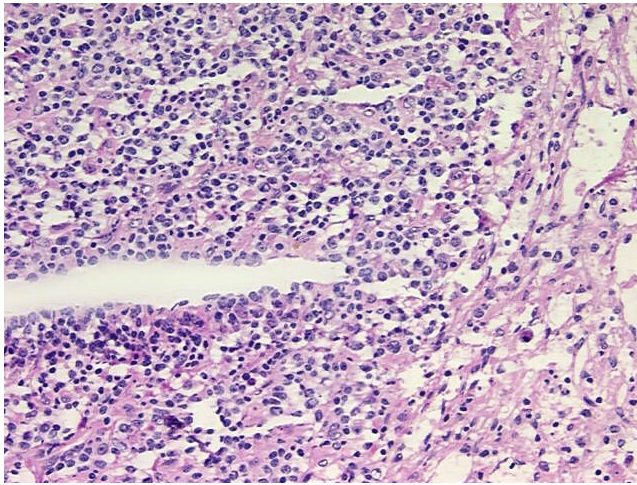
[View online »](#)

Gender:	Female
Tumor Grade:	Not Reported
Minimum Stage Grouping:	IE
T (Extent of Primary Tumor):	Not applicable
N (Lymph node metastasis):	Not applicable
M (Distant metastasis):	Not applicable
Diagnostic Test Results:	CD3 ~ Leu4 ~ UCHT1 ! by IHC,Negative; Tyrosinase,Negative; MART-1 ~ Melanoma Marker ~ Melan-A,Negative; S100 protein,Positive; HMB45 melanoma antigen ~ GP100 ! by IHC,Negative; CD43 ~ Leu22 ! by IHC,Negative; CD15 ~ Lewis X ~ Leu M1 ! by I
Storage:	Store tissue total RNA at -80°C.
Stability:	These products are stable for one year from date of shipping when stored at -80°C without repeated freeze/thaws.

### Product images:



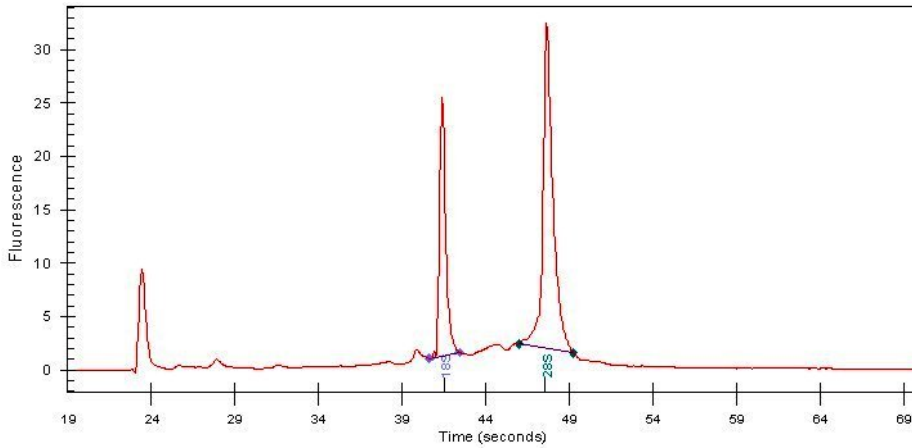
4x Image



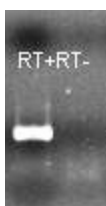
20x Image



RNA Gel Image



RNA Electropherogram Image



RNA RT-PCR Image