

## Product datasheet for CR562644

### Tissue Total RNA, Breast

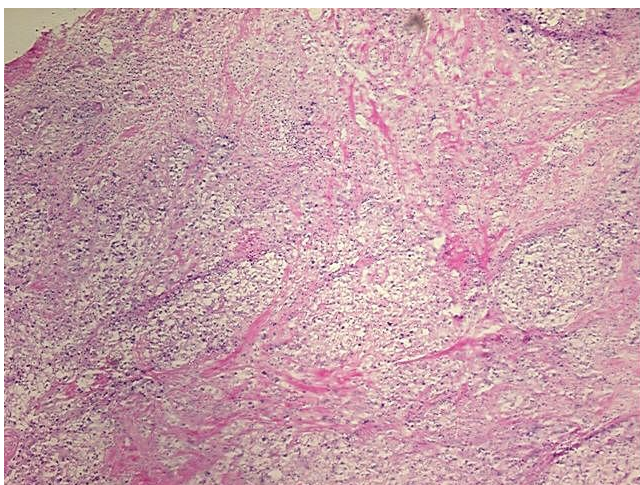
#### Product data:

|   |                                  |
|---|----------------------------------|
| Product Type:                                     | Total RNA                        |
| Disease State:                                    | Cancer                           |
| Diagnosis Category:                               | Breast Cancer                    |
| Tissue:   | Breast                           |
| Frozen Sample ID:                                 | FR000058E2                       |
| Case ID:  | CU0000001537                     |
| Prep:   | 1                                |
| Vial ID:  | RN000007FB                       |
| Tissue of Origin:                                 | Breast                           |
| Site of Finding:                                  | Breast                           |
| Appearance:                                       | Tumor                            |
| Sample Diagnosis (from Pathology Verification):   | Adenocarcinoma of breast, ductal |
| Normal:   | 1%                               |
| Lesional:   | 0%                               |
| Tumor:  | 85%                              |
| Tumor Hypo/Acellular Stroma:                      | 2%                               |
| Tumor Hypercellular Stroma:                       | 10%                              |
| Necrosis:   | 2%                               |
| Bioanalyzer Ratio (28S/18S):                      | 1.22                             |
| CASE Diagnosis (from medical center path report): | Adenocarcinoma of breast, ductal |
| Age:  | 56                               |

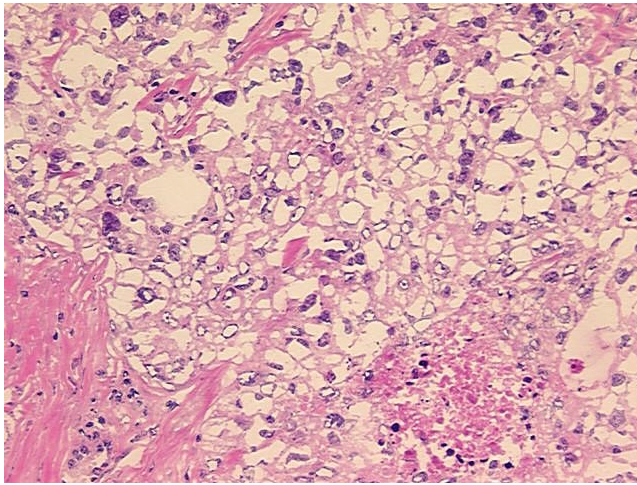


[View online »](#)

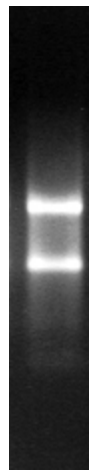
|                              |  |
|------------------------------|--|
| Gender:                      | Female   |
| Tumor Grade:                 | NSABP Grade: Nuclear 3 of 3 & Histologic 3 of 3  |
| Minimum Stage Grouping:      | IIB  |
| T (Extent of Primary Tumor): | T2   |
| N (Lymph node metastasis):   | N1b  |
| M (Distant metastasis):      | MX   |
| Storage:                     | Store tissue total RNA at -80°C.   |
| Stability:                   | These products are stable for one year from date of shipping when stored at -80°C without repeated freeze/thaws. |

**Product images:**

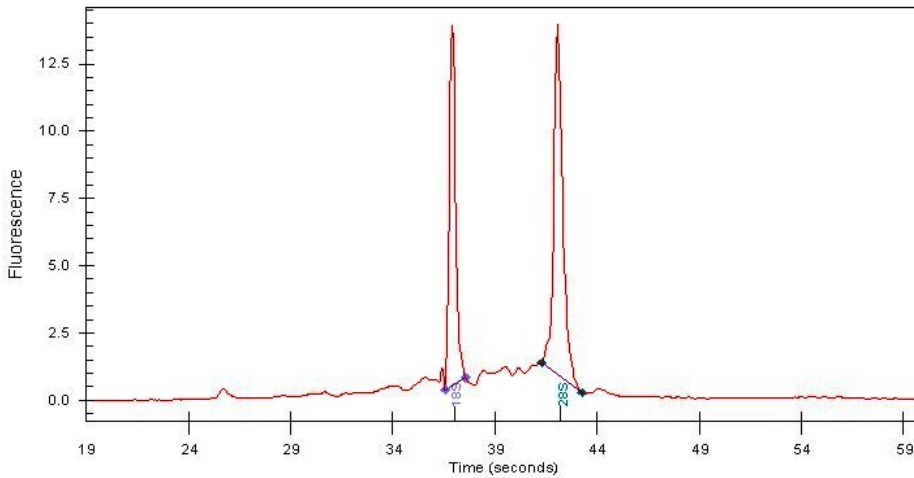
4x Image



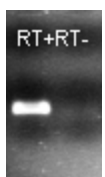
20x Image



RNA Gel Image



RNA Electropherogram Image



RNA RT-PCR Image