

## Product datasheet for CR562638

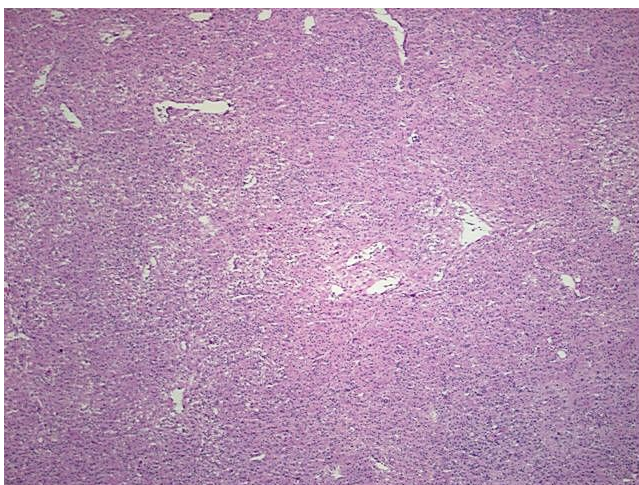
### Tissue Total RNA, Lymph node: axillary

#### Product data:

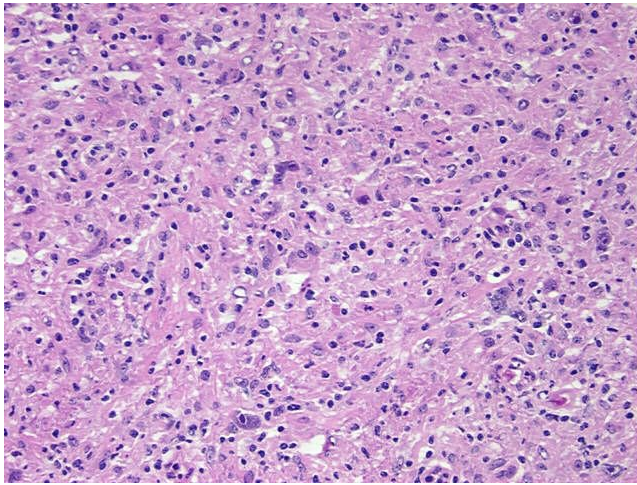
Product Type:	Total RNA
Disease State:	Cancer
Diagnosis Category:	Lymphoma
Tissue:	Lymph node
Frozen Sample ID:	FR00005A64
Case ID:	CU0000001545
Prep:	1
Vial ID:	RN00000DF6
Tissue of Origin:	Lymph node: axillary
Site of Finding:	Lymphoid tissue
Appearance:	Tumor
Sample Diagnosis (from Pathology Verification):	Lymphoma, Hodgkin, nodular sclerosing
Normal:	30%
Lesional:	0%
Tumor:	60%
Tumor Hypo/Acellular Stroma:	10%
Tumor Hypercellular Stroma:	0%
Necrosis:	0%
Bioanalyzer Ratio (28S/18S):	1.61
CASE Diagnosis (from medical center path report):	Lymphoma, Hodgkin, nodular sclerosing
Age:	56


[View online »](#)

<b>Gender:</b>	Female
<b>Tumor Grade:</b>	Not Reported
<b>Minimum Stage Grouping:</b>	IV
<b>T (Extent of Primary Tumor):</b>	Not applicable
<b>N (Lymph node metastasis):</b>	Not applicable
<b>M (Distant metastasis):</b>	Not applicable
<b>Storage:</b>	Store tissue total RNA at -80°C.
<b>Stability:</b>	These products are stable for one year from date of shipping when stored at -80°C without repeated freeze/thaws.

**Product images:**


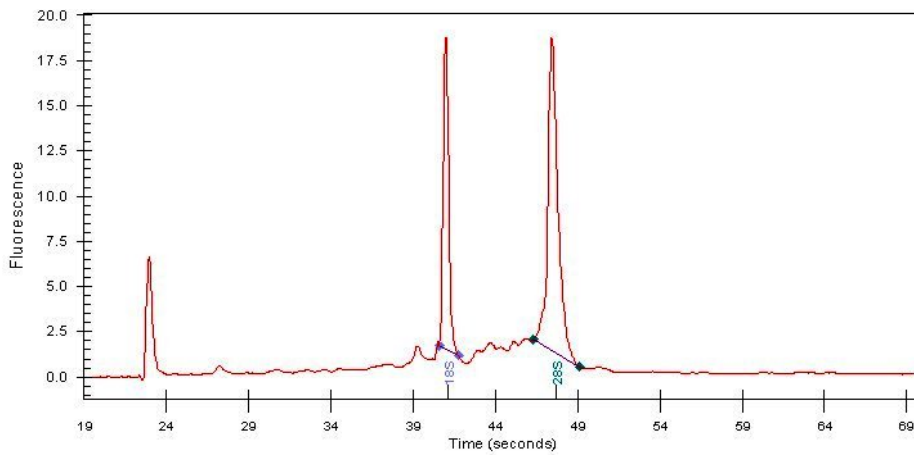
4x Image



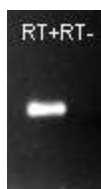
20x Image



RNA Gel Image



RNA Electropherogram Image



RNA RT-PCR Image