

Product datasheet for CR562629

Tissue Total RNA, Lung: left upper lobe

Product data:

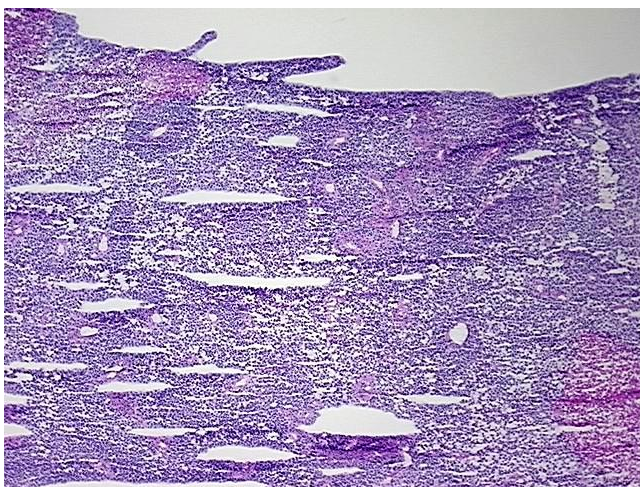
Product Type:	Total RNA
Disease State:	Cancer
Diagnosis Category:	Lung Cancer
Tissue:	Lung
Frozen Sample ID:	FR0003FD6F
Case ID:	CI0000019503
Prep:	1
Vial ID:	RN000038BE
Tissue of Origin:	Lung: left upper lobe
Site of Finding:	Lung: left upper lobe
Appearance:	Tumor
Sample Diagnosis (from Pathology Verification):	Carcinoma of lung, small cell
Normal:	0%
Lesional:	0%
Tumor:	40%
Tumor Hypo/Acellular Stroma:	0%
Tumor Hypercellular Stroma:	0%
Necrosis:	60%
Pathology Verification notes from H&E review:	Tumor: only small cell carcinoma seen in this section
Bioanalyzer Ratio (28S/18S):	1.86



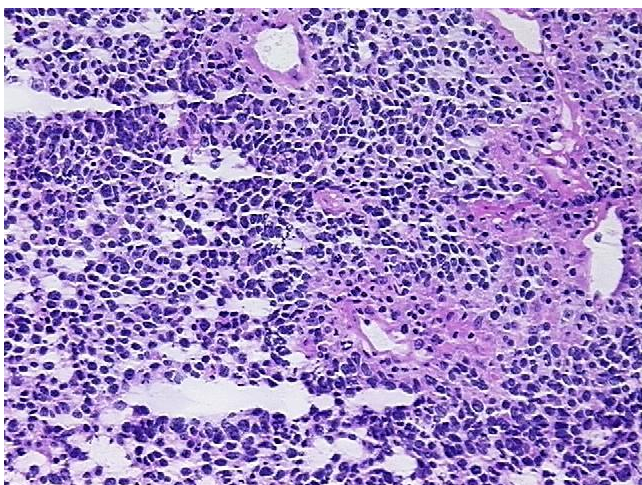
[View online »](#)

CASE Diagnosis (from medical center path report):	Carcinoma of lung
Age:	61
Gender:	Male
Race:	White or Caucasian
Tumor Grade:	AJCC G3: Poorly differentiated
Minimum Stage Grouping:	IIIB
T (Extent of Primary Tumor):	T4
N (Lymph node metastasis):	N0
M (Distant metastasis):	MX
Diagnostic Test Results:	CD227 ~ MUC1 ~ EMA ~ CA15-3 ! by IHC,Positive; Cytokeratin (Pan) ~ Keratin, Pan ! by IHC,Positive; CD56 ~ NCAM ~ NKH1 ! by IHC,Positive; Synaptophysin ~ SYN ! by IHC,Positive; ERBB1 ~ EGFR ~ Epidermal growth factor receptor ! by IHC,Posi
Storage:	Store tissue total RNA at -80°C.
Stability:	These products are stable for one year from date of shipping when stored at -80°C without repeated freeze/thaws.

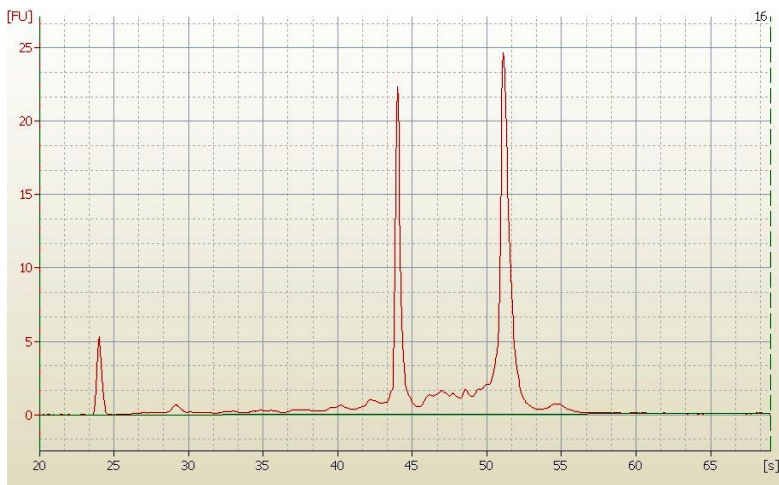
Product images:



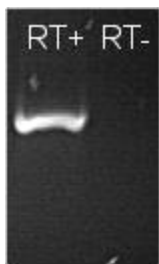
4x Image



20x Image



RNA Electropherogram Image



RNA RT-PCR Image