

Product datasheet for **CR562616**

Tissue Total RNA, Skin

Product data:

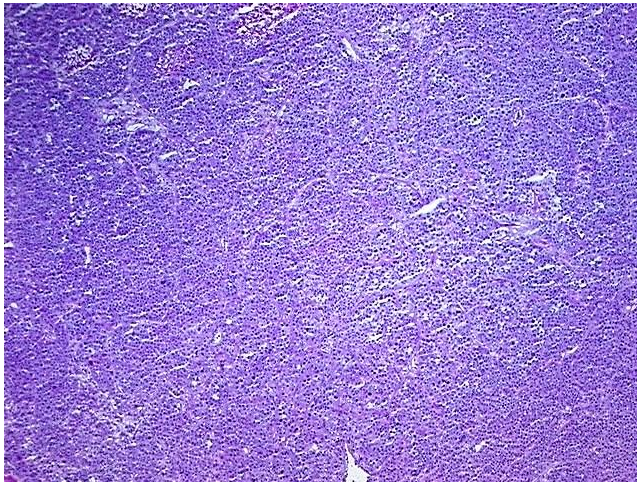
| | |
|---|---|
| Product Type: | Total RNA |
| Disease State: | Cancer |
| Diagnosis Category: | Melanoma |
| Tissue: | Skin |
| Frozen Sample ID: | FR00043A89 |
| Case ID: | CI0000019842 |
| Prep: | 1 |
| Vial ID: | RN00003CEE |
| Tissue of Origin: | Skin |
| Site of Finding: | Lung |
| Appearance: | Tumor |
| Sample Diagnosis (from Pathology Verification): | Malignant melanoma, metastatic |
| Normal: | 25% |
| Lesional: | 0% |
| Tumor: | 70% |
| Tumor Hypo/Acellular Stroma: | 0% |
| Tumor Hypercellular Stroma: | 5% |
| Necrosis: | 0% |
| Pathology Verification notes from H&E review: | Inflammation: Mild Lymphoplasmacytic infiltrate |
| Bioanalyzer Ratio (28S/18S): | 1.79 |



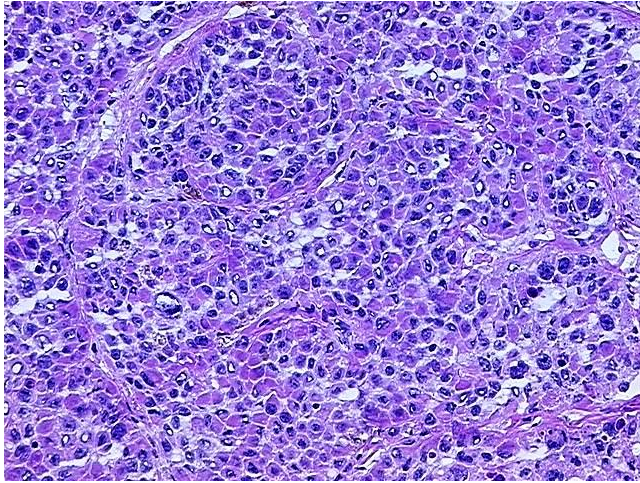
[View online »](#)

| | |
|--|---|
| CASE Diagnosis (from medical center path report): | Malignant melanoma, metastatic |
| Age: | 57 |
| Gender: | Male |
| Race: | White or Caucasian |
| Tumor Grade: | Not Reported |
| Minimum Stage Grouping: | IV |
| T (Extent of Primary Tumor): | T3 |
| N (Lymph node metastasis): | N1 |
| M (Distant metastasis): | M1b |
| Diagnostic Test Results: | Cytokeratin (Pan) ~ Keratin, Pan ! by IHC,Negative; S100 protein,Positive; HMB45 melanoma antigen ~ GP100 ! by IHC,Positive |
| Storage: | Store tissue total RNA at -80°C. |
| Stability: | These products are stable for one year from date of shipping when stored at -80°C without repeated freeze/thaws. |

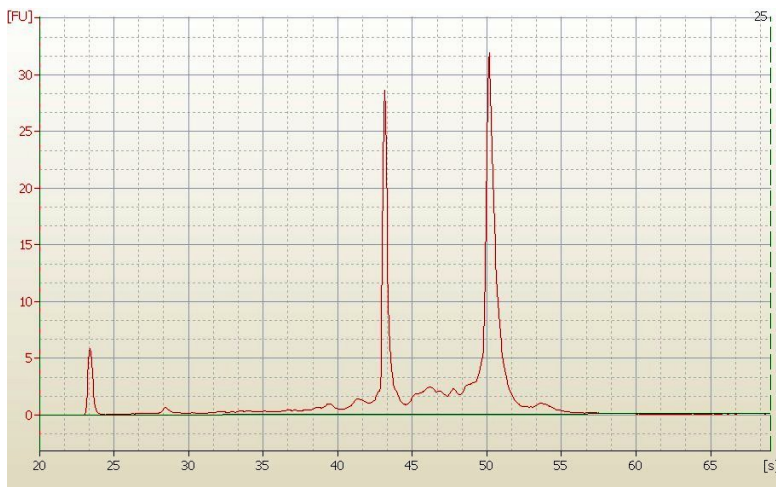
Product images:



4x Image



20x Image



RNA Electropherogram Image



RNA RT-PCR Image