

## Product datasheet for **CR562615**

### Tissue Total RNA, Lung: right upper lobe

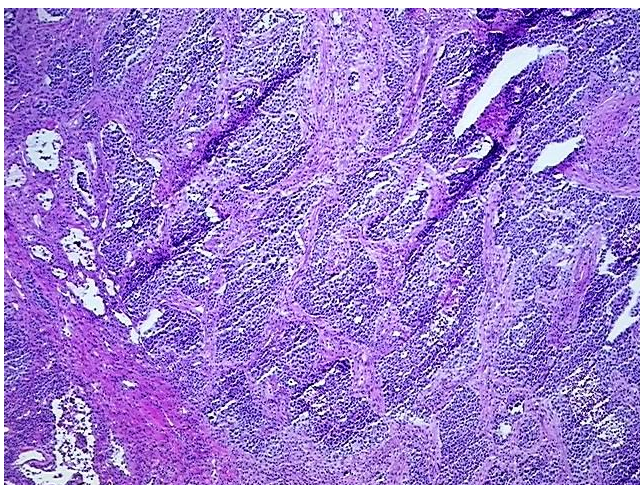
#### Product data:

Product Type:	Total RNA
Disease State:	Cancer
Diagnosis Category:	Lung Cancer
Tissue:	Lung
Frozen Sample ID:	FR00043B31
Case ID:	CI0000019863
Prep:	1
Vial ID:	RN00003467
Tissue of Origin:	Lung: right upper lobe
Site of Finding:	Lung: right upper lobe
Appearance:	Tumor
Sample Diagnosis (from Pathology Verification):	Carcinoma of lung, squamous cell
Normal:	10%
Lesional:	0%
Tumor:	65%
Tumor Hypo/Acellular Stroma:	24%
Tumor Hypercellular Stroma:	0%
Necrosis:	1%
Pathology Verification notes from H&E review:	Tumor Stroma (Cellular): Desmoplastic reaction; Inflammation: Severe Mixed inflammatory infiltrate
Bioanalyzer Ratio (28S/18S):	1.44

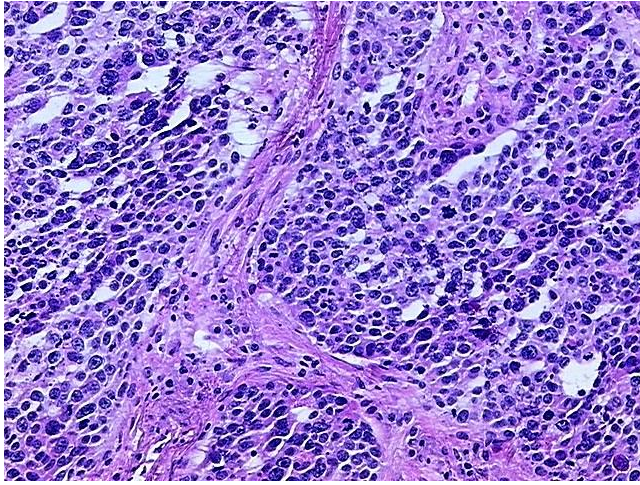


[View online »](#)

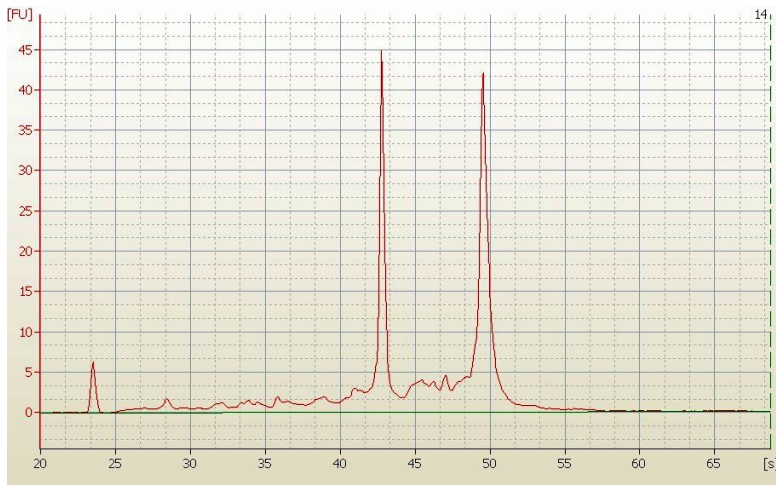
<b>CASE Diagnosis (from medical center path report):</b>	Carcinoma of lung, squamous cell
<b>Age:</b>	65
<b>Gender:</b>	Male
<b>Race:</b>	White or Caucasian
<b>Tumor Grade:</b>	AJCC G3: Poorly differentiated
<b>Minimum Stage Grouping:</b>	IIB
<b>T (Extent of Primary Tumor):</b>	T3
<b>N (Lymph node metastasis):</b>	N0
<b>M (Distant metastasis):</b>	MX
<b>Diagnostic Test Results:</b>	Verhoeff-Van Gieson ~ Elastin stain,Positive; Cytokeratins (5 and 6) ~ CK5,6 ! by IHC,Negative; Cytokeratin (Pan) ~ Keratin, Pan ! by IHC,Positive; Synaptophysin ~ SYN ! by IHC,Negative; ERBB1 ~ EGFR ~ Epidermal growth factor receptor ! by IHC
<b>Storage:</b>	Store tissue total RNA at -80°C.
<b>Stability:</b>	These products are stable for one year from date of shipping when stored at -80°C without repeated freeze/thaws.

**Product images:**

4x Image



20x Image



RNA Electropherogram Image



RNA RT-PCR Image