

## Product datasheet for CR562612

### Tissue Total RNA, Breast, left

#### Product data:

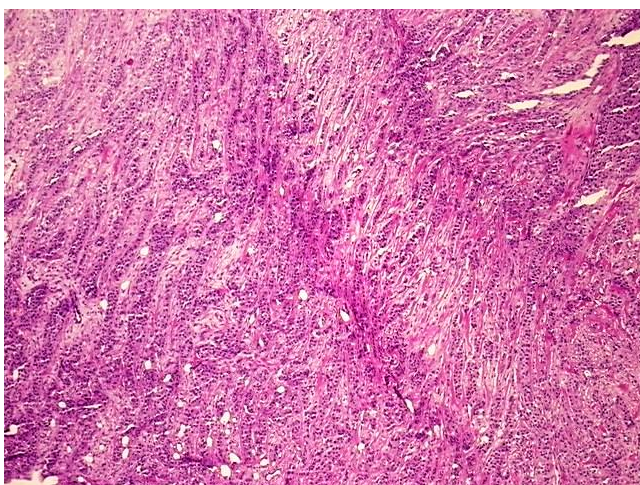
Product Type:	Total RNA
Disease State:	Cancer
Diagnosis Category:	Breast Cancer
Tissue:	Breast
Frozen Sample ID:	FR00043B41
Case ID:	CI0000019904
Prep:	1
Vial ID:	RN000037B0
Tissue of Origin:	Breast, left
Site of Finding:	Breast, left
Appearance:	Tumor
Sample Diagnosis (from Pathology Verification):	Adenocarcinoma of breast, ductal, lobular features
Normal:	0%
Lesional:	0%
Tumor:	80%
Tumor Hypo/Acellular Stroma:	10%
Tumor Hypercellular Stroma:	10%
Necrosis:	0%
Bioanalyzer Ratio (28S/18S):	1.43
CASE Diagnosis (from medical center path report):	Adenocarcinoma of breast, ductal, lobular features
Age:	69



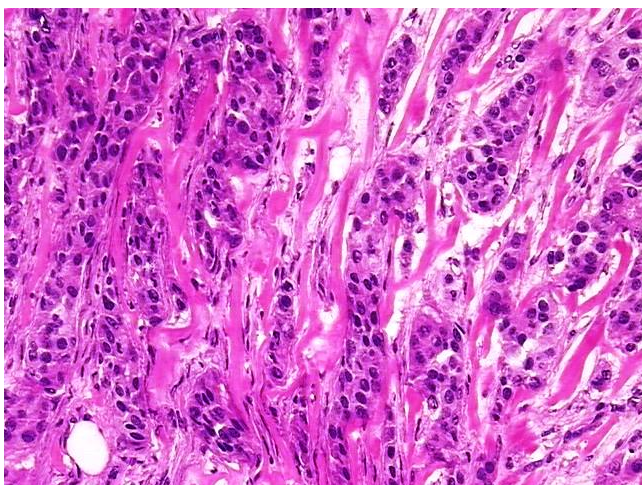
[View online »](#)

Gender:	Female
Race:	White or Caucasian
Tumor Grade:	Nottingham G3: 8-9 points High combined grade (unfavorable)
Minimum Stage Grouping:	IIB
T (Extent of Primary Tumor):	T2
N (Lymph node metastasis):	N1mi
M (Distant metastasis):	MX
Diagnostic Test Results:	Proliferation index ~ PI,High; Progesterone receptor ~ PR ! by IHC,Positive; Estrogen receptor ~ ER ! by IHC,Positive; DNA ploidy ~ Cell ploidy,Aneuploid: DI not 0.5 or 1.0 or 2.0; ERBB2,No gene abnormality; HER2 ~ ERBB2 ~ Neu ! by IHC,Positiv
Storage:	Store tissue total RNA at -80°C.
Stability:	These products are stable for one year from date of shipping when stored at -80°C without repeated freeze/thaws.

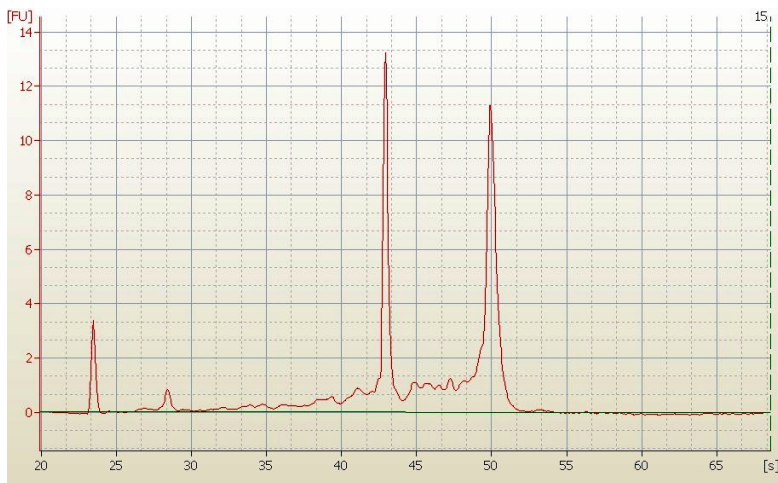
### Product images:



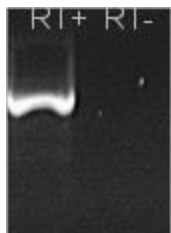
4x Image



20x Image



RNA Electropherogram Image



RNA RT-PCR Image