

## Product datasheet for CR562610

### Tissue Total RNA, Liver: right lobe

#### Product data:

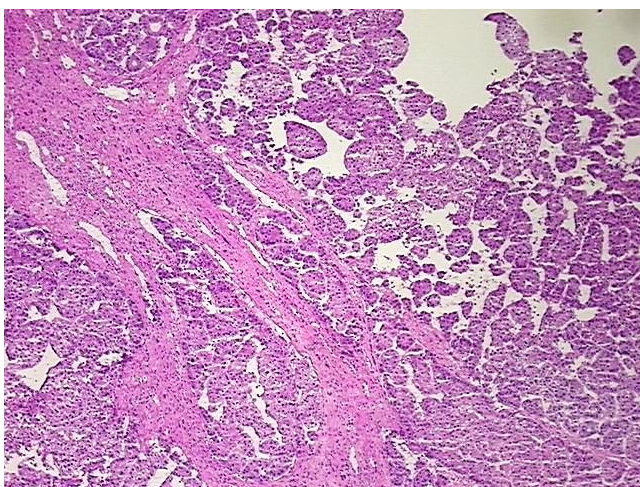
Product Type:	Total RNA
Disease State:	Cancer
Diagnosis Category:	Liver Cancer
Tissue:	Liver
Frozen Sample ID:	FR00043637
Case ID:	CI0000019939
Prep:	1
Vial ID:	RN00002444
Tissue of Origin:	Liver: right lobe
Site of Finding:	Liver: right lobe
Appearance:	Tumor
Sample Diagnosis (from Pathology Verification):	Carcinoma of liver, hepatocellular
Normal:	0%
Lesional:	0%
Tumor:	70%
Tumor Hypo/Acellular Stroma:	30%
Tumor Hypercellular Stroma:	0%
Necrosis:	0%
Bioanalyzer Ratio (28S/18S):	1.72
CASE Diagnosis (from medical center path report):	Carcinoma of liver, hepatocellular
Age:	62



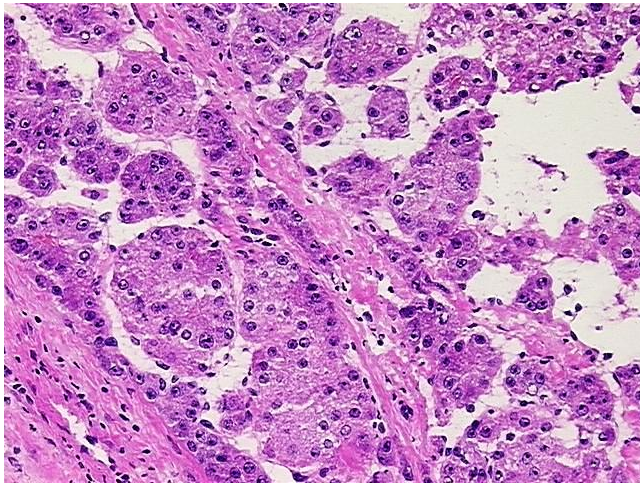
[View online »](#)

Gender:	Female
Race:	White or Caucasian
Tumor Grade:	AJCC G1: Well differentiated
Minimum Stage Grouping:	II
T (Extent of Primary Tumor):	T2
N (Lymph node metastasis):	N0
M (Distant metastasis):	MX
Diagnostic Test Results:	von Willebrand Factor Antigen, plasma ~ Ristocetin Cofactor (RCF), plasma, Reported as Performed or Reviewed; CD31 ~ PECAM1 ! by IHC, Reported as Performed or Reviewed; CD34 ~ HPCA ! by IHC, Reported as Performed or Reviewed; Alpha-1-fetoprotein ~ AF
Storage:	Store tissue total RNA at -80°C.
Stability:	These products are stable for one year from date of shipping when stored at -80°C without repeated freeze/thaws.

### Product images:



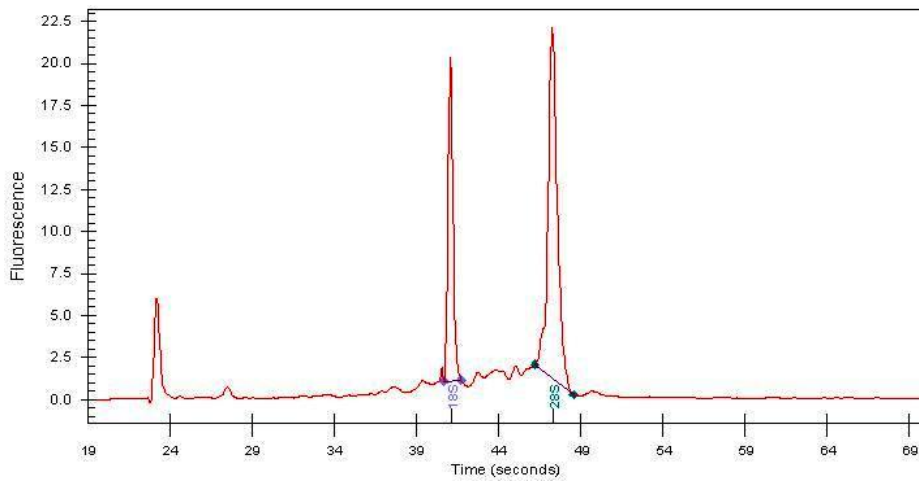
4x Image



20x Image



RNA Gel Image



RNA Electropherogram Image



RNA RT-PCR Image