

Product datasheet for **CR562600**

Tissue Total RNA, Smooth muscle

Product data:

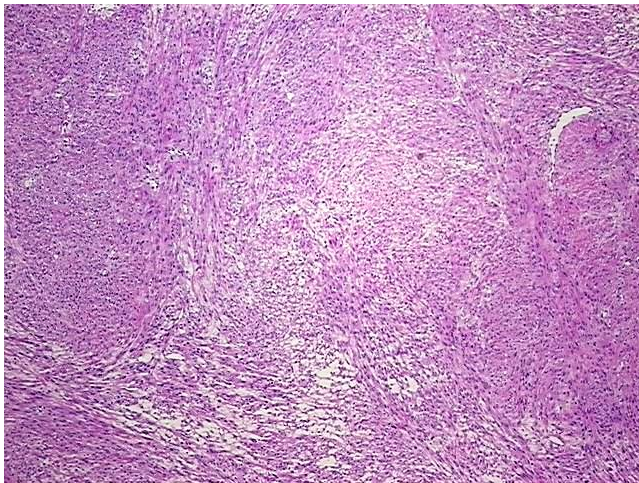
Product Type:	Total RNA
Disease State:	Cancer
Diagnosis Category:	Sarcoma
Tissue:	Smooth muscle
Frozen Sample ID:	FR00044290
Case ID:	CI0000019193
Prep:	1
Vial ID:	RN00003BA1
Tissue of Origin:	Smooth muscle
Site of Finding:	Pelvis
Appearance:	Tumor
Sample Diagnosis (from Pathology Verification):	Leiomyosarcoma, recurrent
Normal:	0%
Lesional:	0%
Tumor:	95%
Tumor Hypo/Acellular Stroma:	0%
Tumor Hypercellular Stroma:	5%
Necrosis:	0%
Pathology Verification notes from H&E review:	Tumor Stroma (Hypo/Acellular): Fibrosis
Bioanalyzer Ratio (28S/18S):	1.3



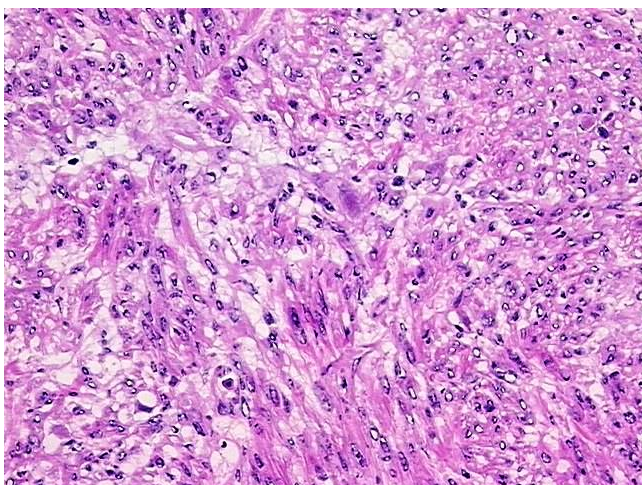
[View online »](#)

CASE Diagnosis (from medical center path report):	Leiomyosarcoma, recurrent
Age:	53
Gender:	Female
Race:	Black or African American
Tumor Grade:	AJCC G1: Well differentiated
Minimum Stage Grouping:	Not Reported
T (Extent of Primary Tumor):	Not Reported
N (Lymph node metastasis):	Not Reported
M (Distant metastasis):	Not Reported
Diagnostic Test Results:	Progesterone receptor ~ PR ! by IHC,Positive; Estrogen receptor ~ ER ! by IHC,Positive, strong
Storage:	Store tissue total RNA at -80°C.
Stability:	These products are stable for one year from date of shipping when stored at -80°C without repeated freeze/thaws.

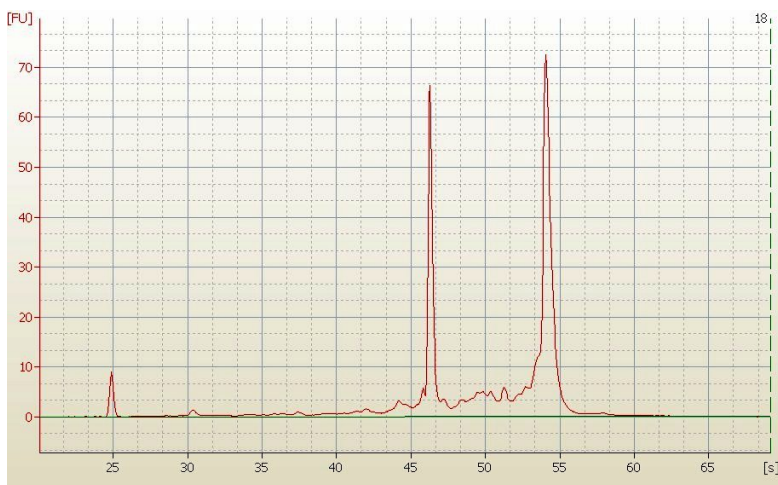
Product images:



4x Image



20x Image



RNA Electropherogram Image



RNA RT-PCR Image